

FALLON, NEVADA

RNAV (GPS) RWY 13R

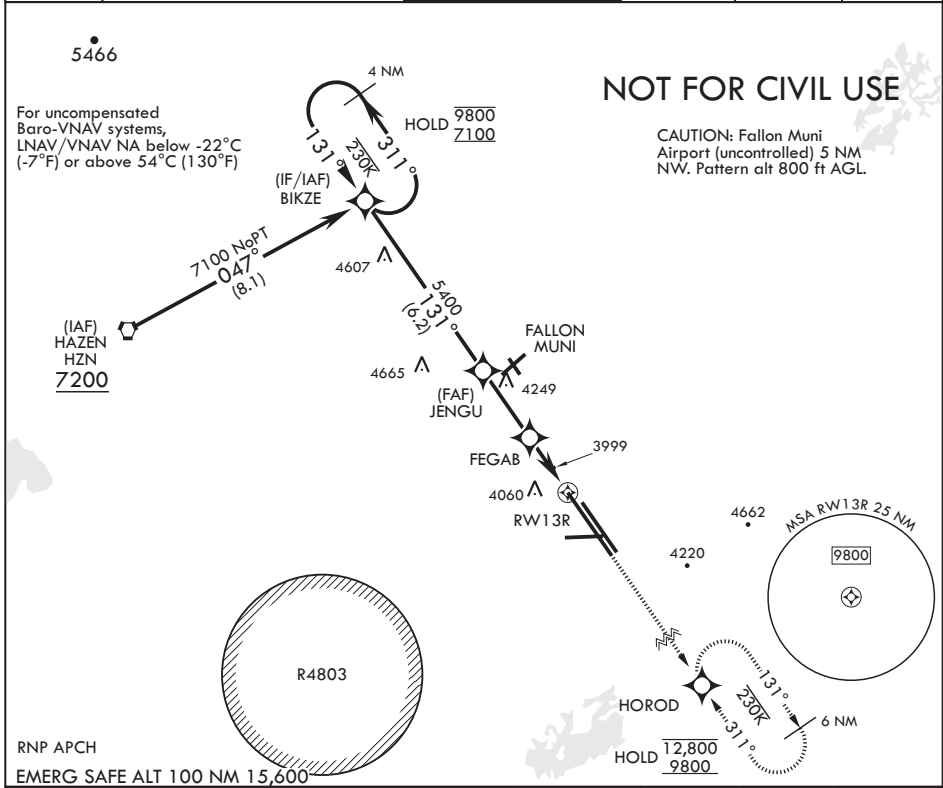
APCH CRS 131°	Rwy Idg TDZE Arprt Elev	14,001 3935 3935
-------------------------	-------------------------------	---

AL-143 (USN)

FALLON NAS (VAN VOORHIS FLD) (KNFL)

▽ MISSED APPROACH: Climb to 9800 direct HOROD and hold, continue climb-in-hold to 9800.

ATIS★ 370.925	NAVY FALLON APP CON/DEP CON 120.85 360.2	NAVY FALLON TOWER★ 119.25 340.2	GND CON 251.15	CLNC DEL 353.55	ASR/PAR
-------------------------	--	---	--------------------------	---------------------------	---------



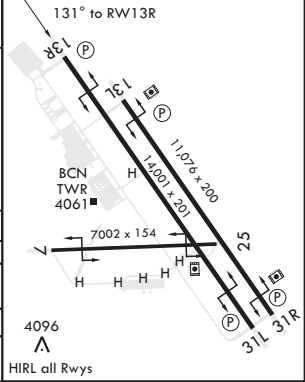
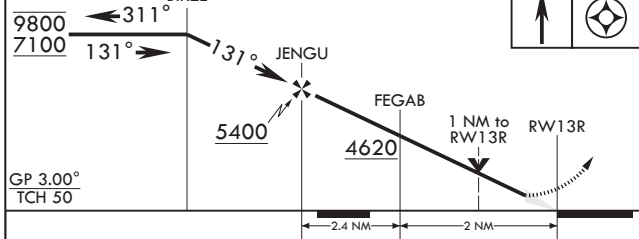
NOT FOR CIVIL USE

CAUTION: Fallon Muni Airport (uncontrolled) 5 NM NW. Pattern alt 800 ft AGL.

SW-4, 28 NOV 2024 to 26 DEC 2024

SW-4, 28 NOV 2024 to 26 DEC 2024

9800	HOROD	ELEV 3935	TDZE 3935
------	-------	-----------	-----------



CATEGORY	A	B	C	D
LNAV/VNAV DA	4185-¾	250	(300-¾)	4194-¾ 259 (300-¾)
LNAV MDA	4320-1	385 (400-1)	4320-1½	385 (400-1½)
C CIRCLING	4400-1	465 (500-1)	4700-2¼ 765 (800-2¼)	4920-3 985 (1000-3)

FALLON, NEVADA
Amdt 4 24MAR22

39°25'N - 118°42'W

FALLON NAS (VAN VOORHIS FLD) (KNFL)

RNAV (GPS) RWY 13R