

FALLON, NEVADA

# RNAV (GPS) RWY 31L

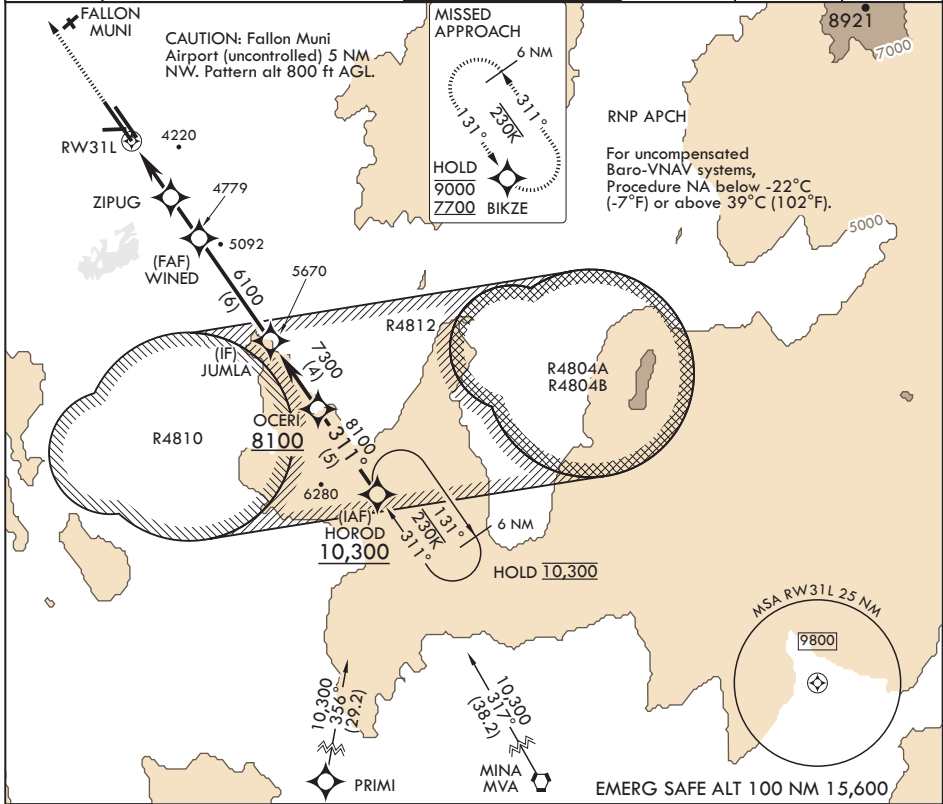
APCH CRS 311°	Rwy Idg TDZE Arprt Elev	14,001 3927 3935
------------------	-------------------------------	------------------------

AL-143 (USN)

FALLON NAS (VAN VOORHIS FLD) (KNFL)

**MISSED APPROACH:** Climb to 7700 direct BIKZE and hold, continue climb-in-hold to 7700.

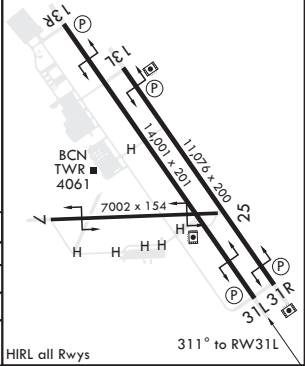
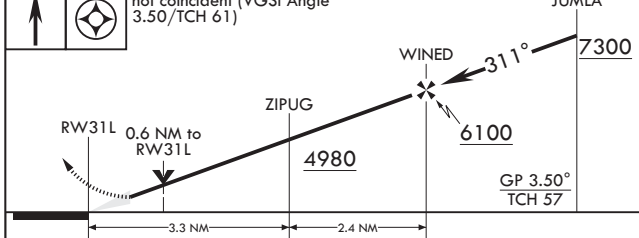
ATIS* 370.925	NAVY FALLON APP CON/DEP CON 120.85 360.2	NAVY FALLON TOWER* 119.25 340.2	GND CON 251.15	CLNC DEL 353.55	ASR/PAR
------------------	---	------------------------------------	-------------------	--------------------	---------



SW-4, 28 NOV 2024 to 26 DEC 2024

SW-4, 28 NOV 2024 to 26 DEC 2024

7700	BIKZE	VGSI and RNAV glidepath not coincident (VGSI Angle 3.50/TCH 61)	ELEV 3935	TDZE 3927
------	-------	---	-----------	-----------



CATEGORY	A	B	C	D
LNNAV/VNAV DA	4200-7/8	273	(300-7/8)	
LNNAV MDA	4200-1	273	(300-1)	
CIRCLING	4400-1	465	(500-1)	4700-2 1/4
				765 (800-2 1/4)
				4920-3
				985 (1000-3)

FALLON, NEVADA 39°25'N - 118°42'W FALLON NAS (VAN VOORHIS FLD) (KNFL)

Amdt 3 24MAR22

# RNAV (GPS) RWY 31L