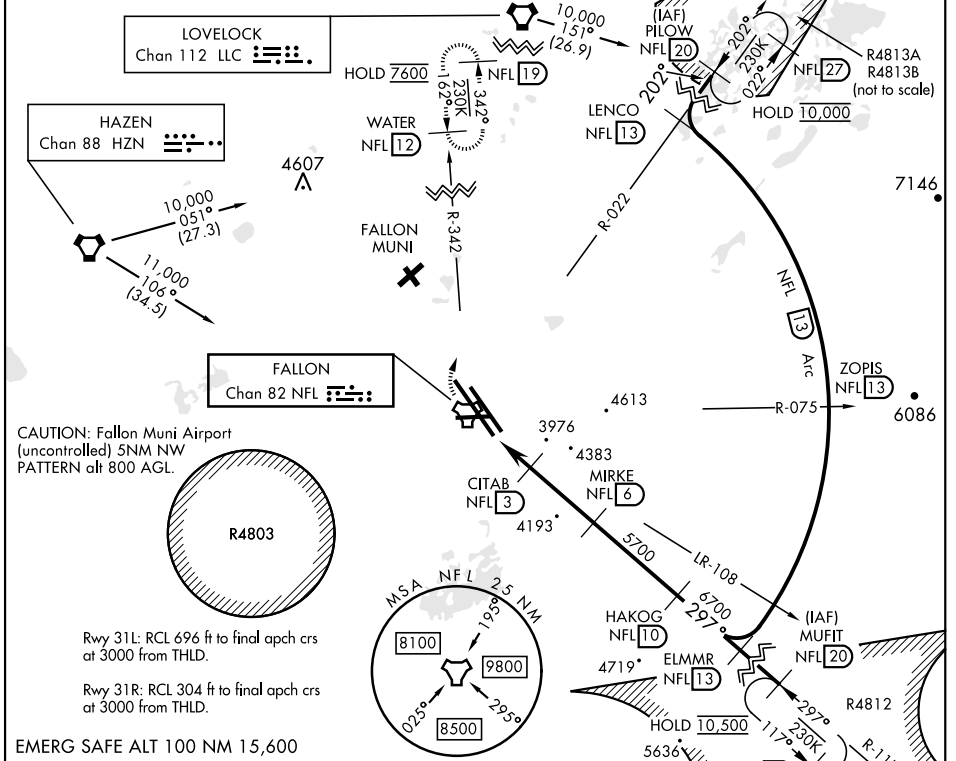


# TACAN Y RWY 31L/R

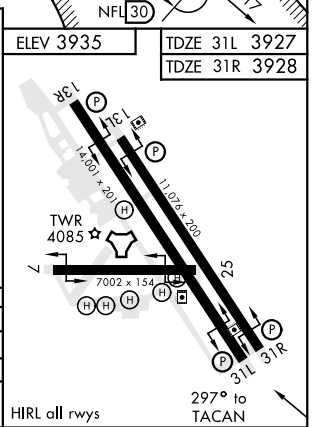
TACAN NFL Chan <b>82</b>	APCH CRS <b>297°</b>	Rwy Idg 31L <b>14,001</b> TDZE 31L <b>3927</b> Arpt Elev <b>3935</b>	31R <b>11,076</b> 31R <b>3928</b>
-----------------------------	-------------------------	--	--------------------------------------

AL-143 [USN] FALLON NAS (VAN VOORHIS FLD) (KNFL)

MISSED APPROACH: Climb direct NFL TACAN, then climbing right turn to 7600. Intercept NFL R-342 outbound to WATER and hold. Continue climb-in-hold to 7600.					
ATIS ★ <b>370.925</b>	NAVY FALLON APP CON <b>120.85 360.2</b>	NAVY FALLON TOWER ★ <b>119.25 340.2</b>	GND CON <b>251.15</b>	CLNC DEL <b>353.55</b>	ASR/PAR



7600 NFL	WATER NFL 12	PILOW R-022		
NFL R-342				
VGSi and descent angles not coincident				
Rwy 31L: VGSi Angle 3.50/TCH 61				
Rwy 31R: VGSi Angle 3.50/TCH 57				
TACAN	CITAB 3	MIRKE 6		
FENAT 1.3	1.9			
4600				
5700				
7600				
8200				
10,000				
3.36° Rwy TCH 57 31L				
3.38° Rwy TCH 57 31R				
CATEGORY	A	B	C	D
S-31L	4240-1	313	(400-1)	
S-31R	4240-1	312	(400-1)	
CIRCLING	4400-1	465 (500-1)	4700-2 765 (800-2 1/4)	4920-3 985 (1000-3)



# TACAN Y RWY 31L/R

SW-4, 28 NOV 2024 to 26 DEC 2024

SW-4, 28 NOV 2024 to 26 DEC 2024