

# YERIN-EIGHT DEPARTURE (YERIN8 • YERIN)

FALLON NAS (VAN VOORHIS FLD) (KNFL)

FALLON, NEVADA

ATIS 370.925 ★  
 CLNC DEL  
 353.55  
 GND CON  
 251.15  
 NAVY FALLON TOWER ★  
 119.25 340.2  
 NAVY FALLON APP/DEP CON  
 120.85 360.2

**TOP ALTITUDE**  
**15,000**

AL-143 [USN]



CAUTION: Fallon Muni Airport (uncontrolled)  
 5 NM NW Pattern alt 800 AGL.

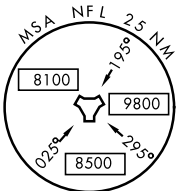
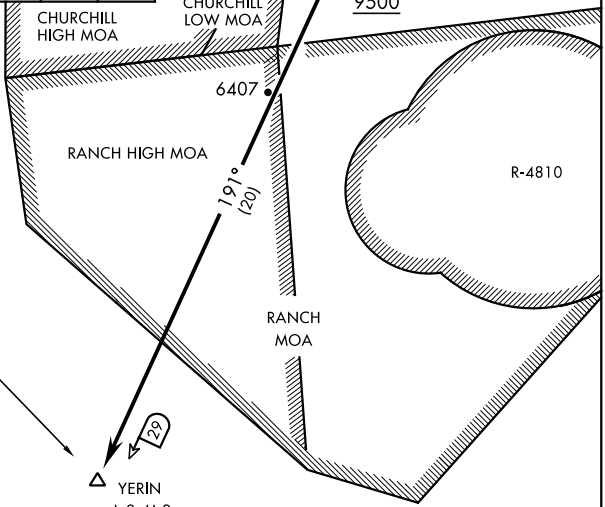
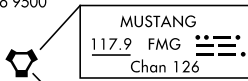


Acft unable to make ATC climb gradient advise ATC prior to departure.

Rwy	Knots	60	120	180	240	300	360
* 7 (a) V/V(fpm)		215	430	645	860	1075	1290
† 7 (b) V/V(fpm)		527	1054	1581	2108	2635	3162
* 13L (a) V/V(fpm)		232	464	696	928	1160	1392
† 13L (b) V/V(fpm)		582	1164	1746	2328	2910	3492
* 13R (a) V/V(fpm)		235	470	705	940	1175	1410
† 13R (b) V/V(fpm)		593	1186	1779	2372	2965	3558
* 25 (a) V/V(fpm)		238	476	714	952	1190	1428
† 25 (b) V/V(fpm)		606	1212	1818	2424	3030	3636
† 31L (a) V/V(fpm)		461	922	1383	1844	2305	2766
† 31R (b) V/V(fpm)		457	914	1371	1828	2285	2742

\* Minimum Military and Civil † ATC Climb Rate

- (a) to 7200
- (b) to 9500



EMERG SAFE ALT 100NM 15,600

## DEPARTURE ROUTE DESCRIPTION

**TAKE-OFF RWY 7:** Turn right hdg 236° to intercept NFL TACAN R-191 to YERIN. Cross FITNU at or above 9500. Do not exceed 250 KIAS until intercepting NFL R-191.

**TAKE-OFF RWY 13L/R:** Climbing right turn hdg 236° to intercept NFL R-191 to YERIN. Cross FITNU at or above 9500. Do not exceed 250 KIAS until intercepting NFL R-191.

**TAKE-OFF RWY 25:** Climbing left turn hdg 146° to intercept NFL R-191 to YERIN. Cross FITNU at or above 9500. Do not exceed 250 KIAS until intercepting NFL R-191.

**TAKE-OFF RWY 31L/R:** Climb to 4500 via heading 311°, then climbing right turn to NFL TACAN, intercept NFL R-191 to YERIN. Do not exceed 250 KIAS until NFL TACAN. Cross FITNU at or above 9500.

# YERIN-EIGHT DEPARTURE (YERIN8 • YERIN)

FALLON, NEVADA

Orig 24MAR22

FALLON NAS (VAN VOORHIS FLD) (KNFL)

SW-4, 28 NOV 2024 to 26 DEC 2024

SW-4, 28 NOV 2024 to 26 DEC 2024