

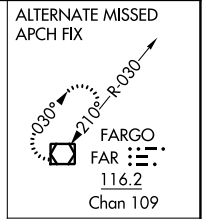
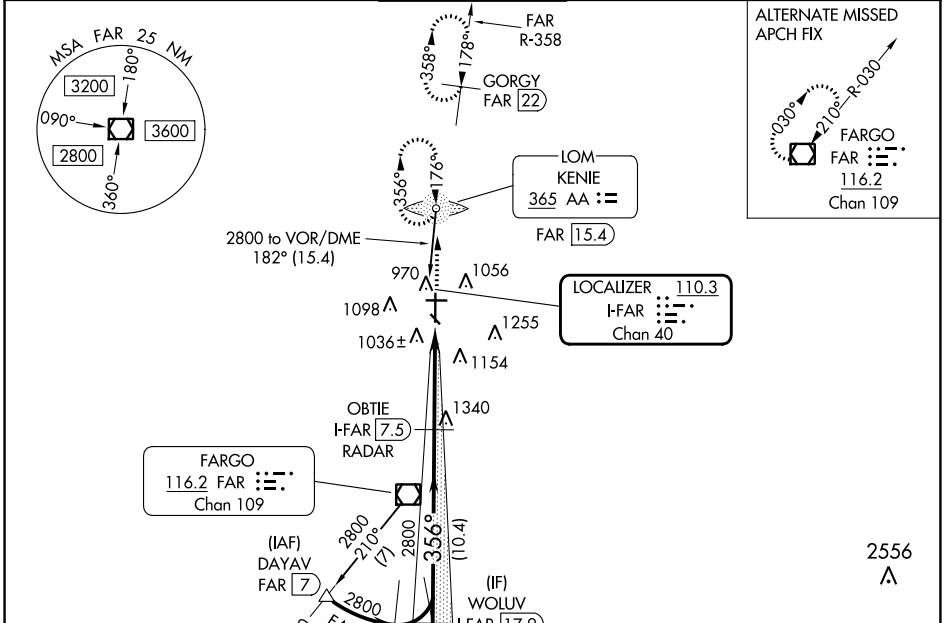
LOC/DME I-FAR 110.3 Chan 40	APP CRS 356°	Rwy Idg TDZE Apt Elev	9001 899 901
---	------------------------	-----------------------------	---

ILS or LOC RWY 36

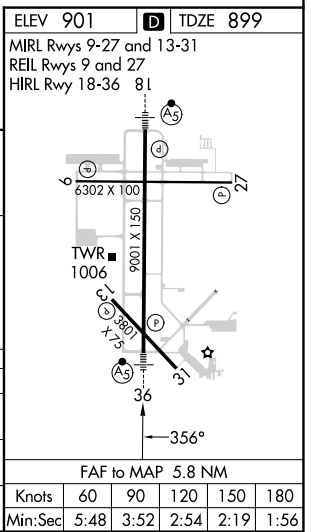
HECTOR INTL (F.A.R.)

ADF or DME required for procedure entry. ADF or DME required.	MALSR 	MISSED APPROACH: Climb to 2500 direct KENIE LOM and hold (DME aircraft climb to 4000 on FAR VOR/DME R-358 to GORGY/22 DME and hold N, RT, 178° inbound, continue climb-in-hold to 4000).
 For inop ALS increase S-ILS 36 Cat E visibility to RVR 4000 and S-LOC 36 Cat C/D/E visibility to 1 3/8 SM. #RVR 1800 authorized with use of FD or AP or HUD to DA.		

ATIS 124.5 379.2	FARGO APP CON 120.4 377.15	FARGO TOWER 133.8 290.4	GND CON 121.9 348.6	CLNC DEL 121.9 348.6
----------------------------	--------------------------------------	-----------------------------------	-------------------------------	--------------------------------



VGSIs and ILS glidepath not coincident (VGSi Angle 3.00/TCH 71).	2500 AA
WOLUV I-FAR [17.9] RADAR	Use I-FAR DME when on the localizer course.
OBTIE I-FAR [7.5] RADAR	
2800	*I-FAR [3] *LOC only
2800	I-FAR [1.7]
GS 3.00° TCH 55	
10.4 NM	4.6 NM
1.2 NM	



CATEGORY	A	B	C	D	E
S-ILS 36#	1099/24 200 (200-1/2)				
S-LOC 36	1360/24	461 (500-1/2)	1360/50 461 (500-1)		
CIRCLING	1380-1	479 (500-1)	1520-1 3/4 619 (700-1 3/4)	1620-2 1/4 719 (800-2 1/4)	1620-2 1/2 719 (800-2 1/2)
FARGO, NORTH DAKOTA Amdt 2A 03JAN19	HECTOR INTL (F.A.R.) ILS or LOC RWY 36				

NC-1, 28 NOV 2024 to 26 DEC 2024

NC-1, 28 NOV 2024 to 26 DEC 2024

Knots	60	90	120	150	180
Min:Sec	5:48	3:52	2:54	2:19	1:56