

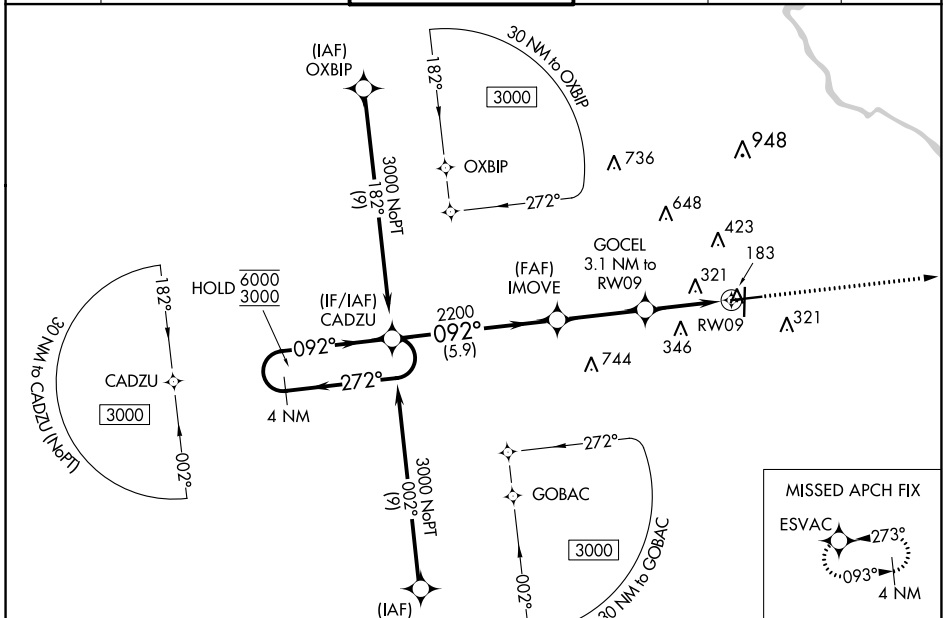
WAAS CH <b>70710</b> <b>W09A</b>	APP CRS <b>092°</b>	Rwy Idg TDZE Apt Elev	<b>6502</b> <b>147</b> <b>147</b>
--	------------------------	-----------------------------	---

# RNAV (GPS) RWY 9

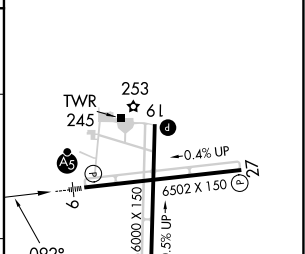
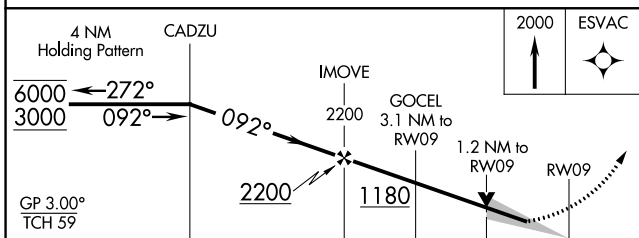
FLORENCE RGNL (FLO)

RNP APCH - GPS.		MALSR	MISSED APPROACH: Climb to 2000 direct ESVAC and hold.		
For uncompensated Baro-VNAV systems, LNAV/VNAV NA below -7°C or above 54°C. Circling Rwy 1, 19 NA at night.					

ATIS <b>123.625</b>	FLORENCE APP CON★ <b>118.6 341.7</b> (256°-074°) <b>135.25 316.15</b> (075°-255°)	FLORENCE TOWER★ <b>125.1</b> (CTAF) <b>0 353.85</b>	GND CON <b>121.9 353.85</b>	CLNC DEL <b>121.9 353.85</b>	UNICOM <b>122.95</b>
------------------------	---	--	--------------------------------	---------------------------------	-------------------------



ELEV 147	TDZE 147
----------	----------



CATEGORY	A	B	C	D
LPV DA		347-1/2	200 (200-1/2)	
LNAV/VNAV DA		603-7/8	456 (500-7/8)	
LNAV MDA	580-1/2	433 (500-1/2)	580-3/4	433 (500-3/4)
CIRCLING	640-1 493 (500-1)	660-1 513 (600-1)	900-2 1/4 753 (800-2 1/4)	900-2 1/2 753 (800-2 1/2)

REIL Rwys 1, 19 and 27  
HIRL Rwy 9-27  
MIRL Rwy 1-19

SE-2, 28 NOV 2024 to 26 DEC 2024

SE-2, 28 NOV 2024 to 26 DEC 2024