

# RNAV (GPS) RWY 15

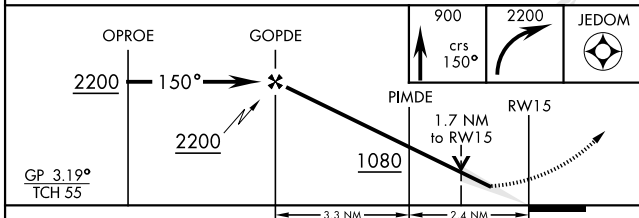
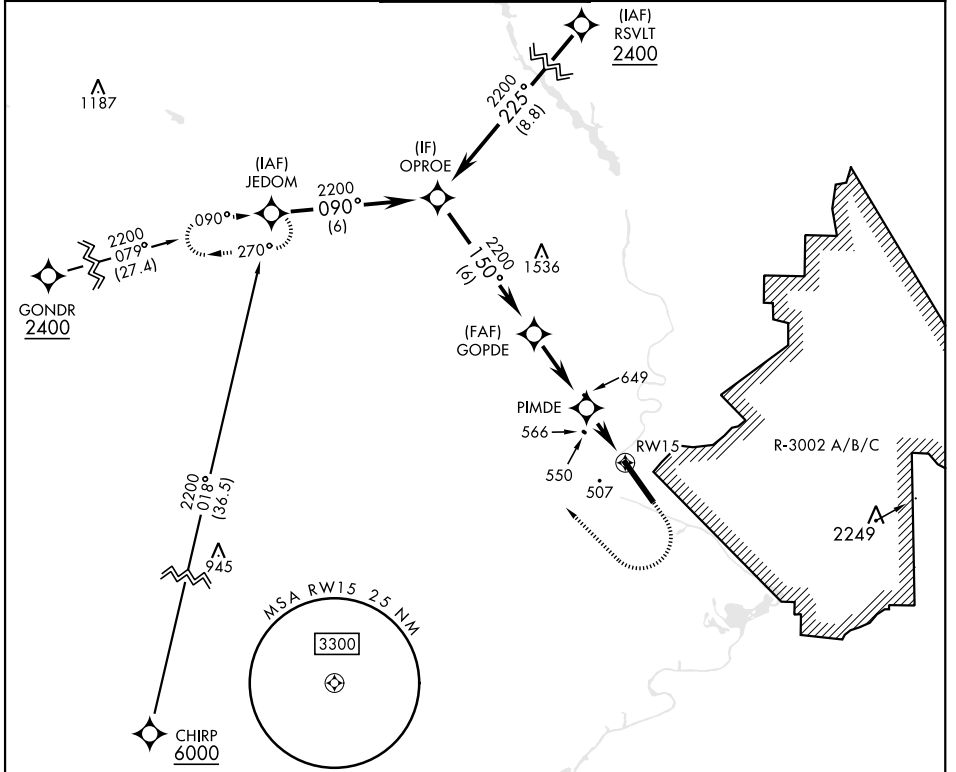
WAAS CH <b>41028</b> <b>W15A</b>	APCH CRS <b>150°</b>	Rwy Idg <b>10,002</b> TDZE <b>226</b> Arpt Elev <b>227</b>
--	-------------------------	--

[USA]

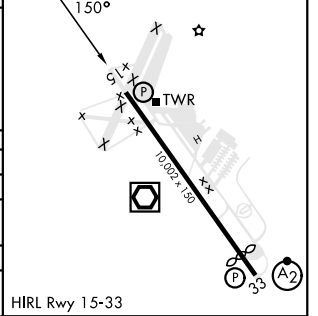
LAWSON AAF (KLSF)

RNP APCH-GPS	MISSED APPROACH: Climb to 900 then climbing right turn to 2200 direct JEDOM and hold.
<p>▼ *Circling not authorized NE of Rwy 15-33. NA when tower closed. For uncompensated Baro-VNAV systems, LNAV/VNAV below -15°C or above 54°C.</p>	

ATIS ★ <b>134.375</b>	ATLANTA APP CON <b>125.5 323.1</b>	TOWER <b>119.05</b> (CTAF) <b>269.525</b>	GND CON <b>121.7 254.25</b>	CLNC DEL <b>121.7 251.15</b>
--------------------------	---------------------------------------	--	--------------------------------	---------------------------------



ELEV 227	TDZE 226
Rwy 33 Idg 9302'	



CATEGORY	A	B	C	D
LPV DA	494-7/8	267	(300-7/8)	
LNAV/VNAV DA	820-1 3/4	593	(600-1 3/4)	
LNAV MDA	820-1	593 (600-1)	820-1 3/4	593 (600-1 3/4)
CIRCLING	820-1	860-1	960-2	1080-2 3/4
	593 (600-1)	633 (700-1)	733 (800-2)	853 (900-2 3/4)

FORT MOORE, GEORGIA 32° 20' N-85° 00' W LAWSON AAF (KLSF)

Amdt 1 28DEC23

# RNAV (GPS) RWY 15

SE-4, 28 NOV 2024 to 26 DEC 2024

SE-4, 28 NOV 2024 to 26 DEC 2024