

# ILS RWY 6 (CAT II)

MC GUIRE FLD,

AL-150 [USAF]

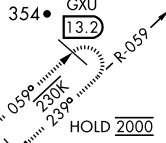
(JOINT BASE MC GUIRE DIX LAKEHURST) (KWRI)

|                           |                         |  |
|---------------------------|-------------------------|--|
| LOC I-WRI<br><b>110.1</b> | APCH CRS<br><b>058°</b> | Rwy Idg <b>10,014</b><br>TDZE <b>131</b><br>Arpt Elev <b>141</b> |
|---------------------------|-------------------------|--|

|  |  |        |  |  |
|--|--|--------|--|--|
| RADAR or DME required to identify the FAF. |  | ALSF-2 | MISSED APPROACH: Climb to 2000 via GXU R-059 to DAYYO and hold. Alternate Missed Approach instructions: Climb to 2000 via GXU R-059 to DAYYO, expect further clearance from ATC. |  |
|--|--|--------|--|--|

|                            |  |                                       |                               |                                |     |
|----------------------------|--|---------------------------------------|-------------------------------|--------------------------------|-----|
| ATIS<br><b>110.6 270.1</b> | MC GUIRE APP CON/DEP CON<br><b>126.475 363.8</b> | MC GUIRE TOWER<br><b>118.65 255.6</b> | GND CON<br><b>121.8 275.8</b> | CLNC DEL<br><b>135.2 335.8</b> | PAR |
|----------------------------|--|---------------------------------------|-------------------------------|--------------------------------|-----|

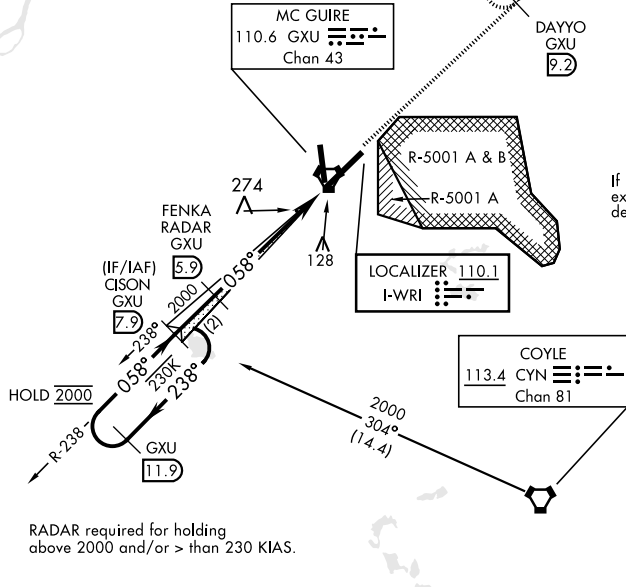
## CATEGORY II ILS - SPECIAL AIRCREW & AIRCRAFT CERTIFICATION REQUIRED



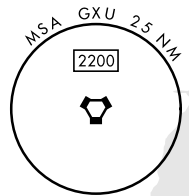
Missed Approach holding at DAYYO NA when R-5001 is active with aerial gunnery.

## RADAR REQUIRED WHEN R-5001 IS ACTIVE

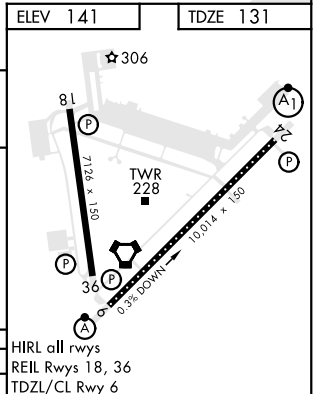
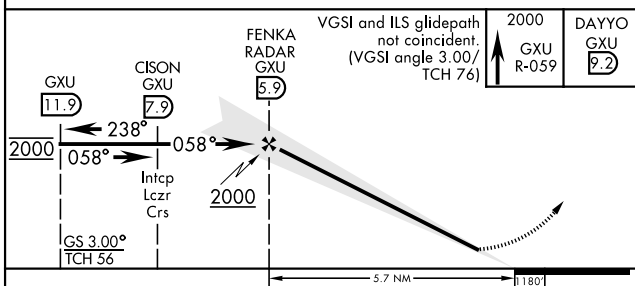
If RADAR inoperative, expect 15 min delay for deactivation of R-5001.



RADAR required for holding above 2000 and/or > than 230 KIAS.



EMERG SAFE ALT 100 NM 5100 FROM GXU VORTAC



|          |   |          |     |        |   |
|----------|---|----------|-----|--------|---|
| CATEGORY | A | B        | C   | D      | E |
| S-ILS 6  |   | RA 91/12 | 100 | DA 231 |   |

HIRL all rwys  
REIL Rwys 18, 36  
TDZL/CL Rwy 6

# ILS RWY 6 (CAT II)

NE-2, 28 NOV 2024 to 26 DEC 2024

NE-2, 28 NOV 2024 to 26 DEC 2024