

WRIGHTSTOWN, NEW JERSEY

# ILS or LOC RWY 24

LOC I-JTQ <b>110.1</b>	APCH CRS <b>238°</b>	Rwy Idg TDZE Arprt Elev	<b>10,014</b> <b>117</b> <b>141</b>
---------------------------	-------------------------	-------------------------------	-------------------------------------------

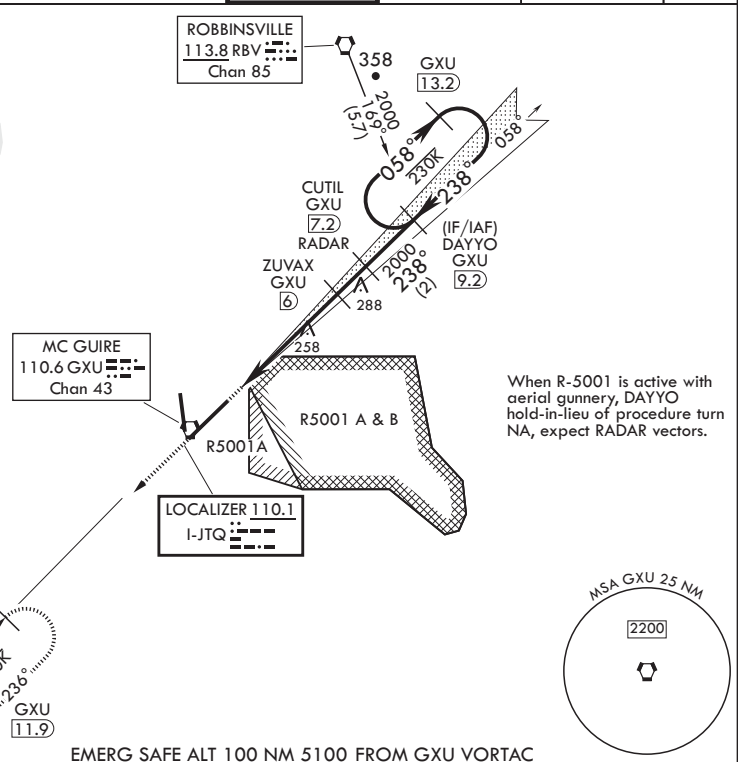
AL-150 (USAF)  
MC GUIRE FIELD (JOINT BASE MC GUIRE DIX LAKEHURST) (KWRI)

**V** \* When ALS inop, increase RVR to 40, vis to 3/4 mile. +RVR 18 authorized with use of FD or AP or HUD to DA.  
\*\* When ALS inop, increase CAT A/B RVR to 55, vis to 1 mile, CAT CDE vis to 1 3/8 miles.  
\*\*\* Circling NA SE of Rwy 24 and E of Rwy 36 when R-5001 A/B Active.

ALSF-1 	MISSED APPROACH: Climb to 2000 via GXU R-236 to CISON and hold.
------------	-----------------------------------------------------------------

ATIS <b>110.6 270.1</b>	MC GUIRE APP CON/DEP CON <b>126.475 363.8</b>	TOWER <b>118.65 255.6</b>	GND CON <b>121.8 275.8</b>	CLNC DEL <b>135.2 335.8</b>	PAR
----------------------------	--------------------------------------------------	------------------------------	-------------------------------	--------------------------------	-----

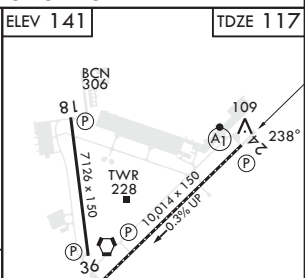
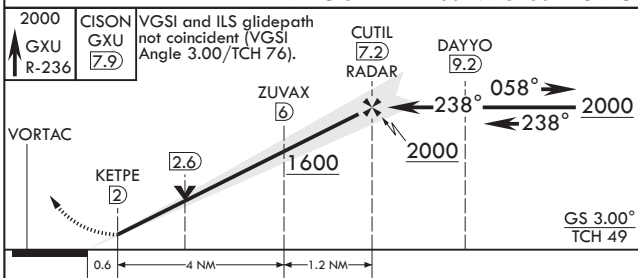
RADAR or DME required to identify the FAF.  
  
RADAR required when R-5001 is active.  
  
RADAR required for holding above 2000 and/or > 230 KIAS.  
  
If RADAR inoperative, expect 15 min delay for deactivation of R-5001.



NE-2, 28 NOV 2024 to 26 DEC 2024

NE-2, 28 NOV 2024 to 26 DEC 2024

EMERG SAFE ALT 100 NM 5100 FROM GXU VORTAC



2000 GXU R-236	CISON GXU 7.9	VGSI and ILS glidepath not coincident (VGSI Angle 3.00/TCH 76).	CUTIL 7.2 RADAR	DAYYO 9.2	ELEV 141	TDZE 117
VORTAC	KETPE 2	ZUVAX 6	238°	058°	2000	2000
0.6	4 NM	1.2 NM				GS 3.00° TCH 49
CATEGORY	A	B	C	D	E	
S-ILS 24*†	317/24		200	(200-½)		
S-LOC 24**	580/24	463 (500-½)	580/50	463	(500-1)	
<b>C</b> CIRCLING***	680-1	539 (600-1)	700-1½ 559 (600-½)	700-2 559 (600-2)	1200-3 1059 (1100-3)	

HIRL all Rwys REIL Rwys 18, 36 TDZL/CL Rwy 6					
FAF to MAP 5.2 NM					
Knots	60	90	120	150	180
Min:Sec	5:12	3:28	2:36	2:05	1:44

WRIGHTSTOWN, NEW JERSEY  
Amdt 6 18MAY23

MC GUIRE FIELD (JOINT BASE MC GUIRE DIX LAKEHURST) (KWRI)  
40°01'N - 74°36'W

# ILS or LOC RWY 24