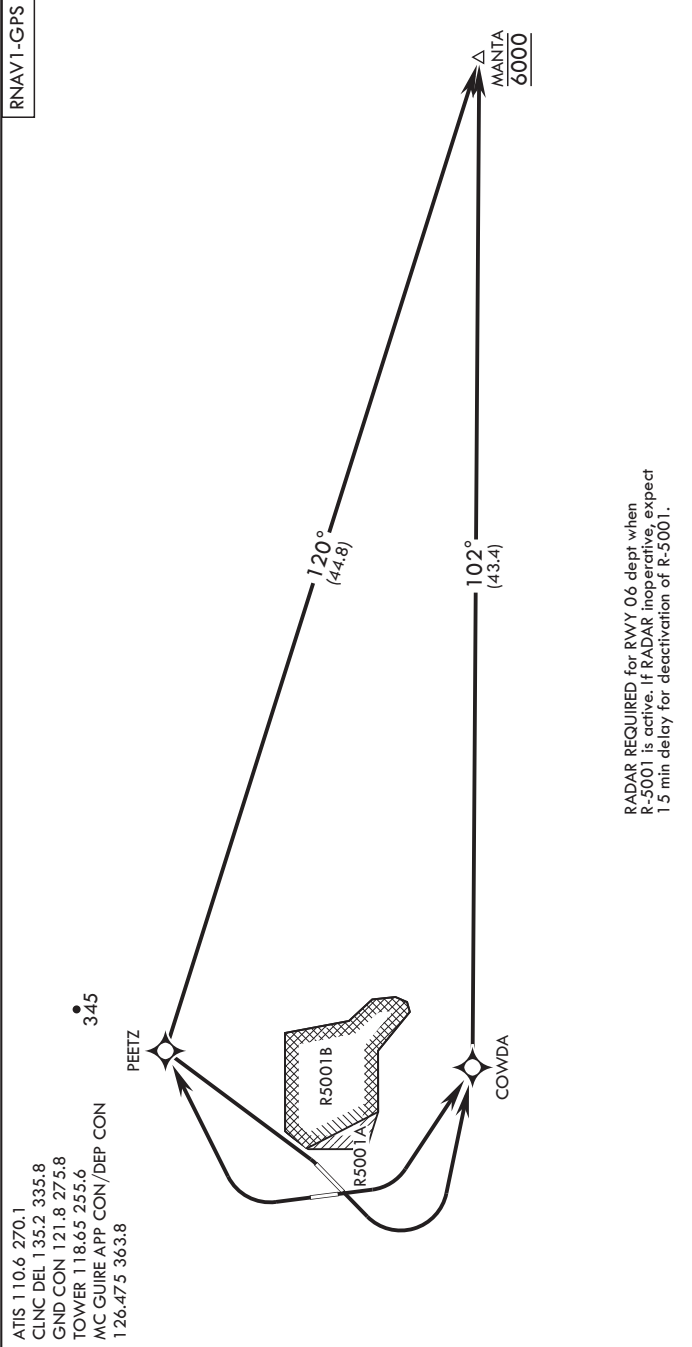


NE-2, 28 NOV 2024 to 26 DEC 2024



RNAV-1-GPS

ATIS 1 10.6 270.1  
 CLNC DEL 1 35.2 335.8  
 GND CON 1 21.8 275.8  
 TOWER 1 18.65 255.6  
 MC GUIRE APP CON/DEP CON  
 1 26.475 363.8

345

PEETZ

COWDA

MANTA 6000

RADAR REQUIRED for RWY 06 dept when  
 R-5001 is active. If RADAR inoperative, expect  
 1.5 min delay for deactivation of R-5001.

DEPARTURE ROUTE DESCRIPTION

- TAKEOFF RWY 06: Climb direct PEETZ, thence...
- TAKEOFF RWY 18: Climbing left turn direct COWDA, thence...
- TAKEOFF RWY 24: Climbing left turn direct COWDA, thence...
- TAKEOFF RWY 36: Climbing right turn direct PEETZ, thence...
- ...track and climb as depicted. Maintain 6000 or higher as assigned.

NE-2, 28 NOV 2024 to 26 DEC 2024