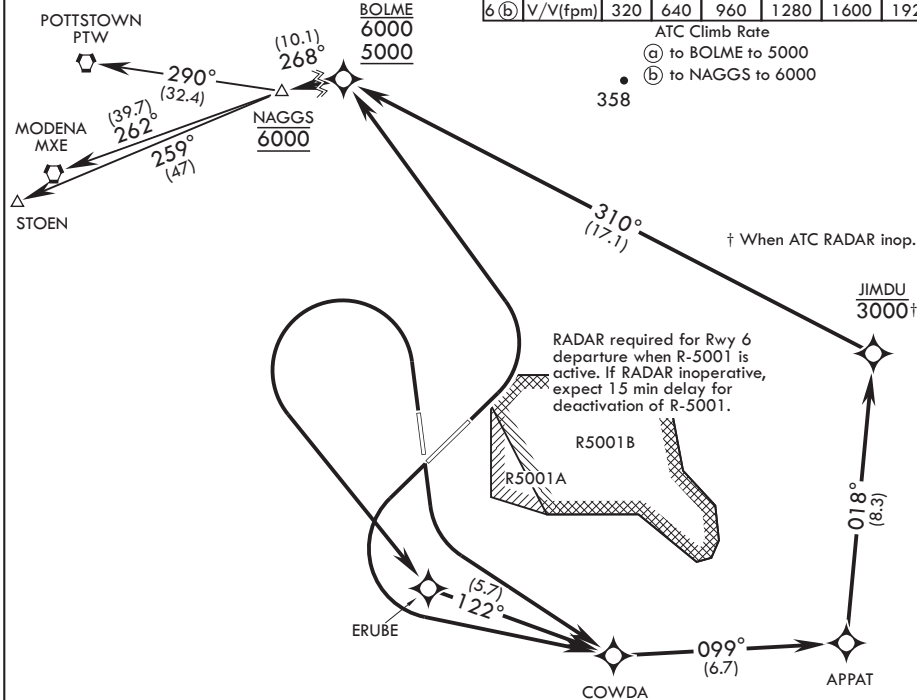


MC GUIRE APP CON/DEP CON  
 126.475 363.8

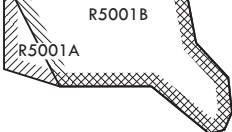
RNAV1 - GPS

Rwy	Knots	60	120	180	240	300	360
6 (a)	V/V(fpm)	424	848	1272	1696	2120	2544
6 (b)	V/V(fpm)	320	640	960	1280	1600	1920

ATC Climb Rate  
 (a) to BOLME to 5000  
 (b) to NAGGS to 6000



RADAR required for Rwy 6 departure when R-5001 is active. If RADAR inoperative, expect 15 min delay for deactivation of R-5001.



NE-2, 28 NOV 2024 to 26 DEC 2024

NE-2, 28 NOV 2024 to 26 DEC 2024

**DEPARTURE ROUTE DESCRIPTION**

**TAKEOFF RWY 6:** Climbing left turn direct to cross BOLME at or above 5000 and at or below 6000, then track as depicted to NAGGS at and maintain 6000, thence...

**TAKEOFF RWY 18:** Climbing left turn direct COWDA, then track as depicted to cross NAGGS at and maintain 6000, thence...

**TAKEOFF RWY 24:** Climbing left turn direct COWDA, then track as depicted to cross NAGGS at and maintain 6000, thence...

**TAKEOFF RWY 36:** Climbing left turn direct ERUBE, then track as depicted to cross NAGGS at and maintain 6000, thence...

...as depicted on assigned transition. Expect further clearance from ATC.

**ALTERNATIVE:** Initial RADAR vector climb-out option to rejoin RNAV routing at BOLME at or above 5000. All runways: Fly runway heading, maintain 6000. Request RADAR vector departure option with CLNC DEL upon initial contact.

**POTSTOWN TRANSITION (NAGGS2.PTW):**

**MODENA TRANSITION (NAGGS2.MXE):**

**STOEN TRANSITION (NAGGS2.STOEN):**