

WRIGHTSTOWN, NEW JERSEY

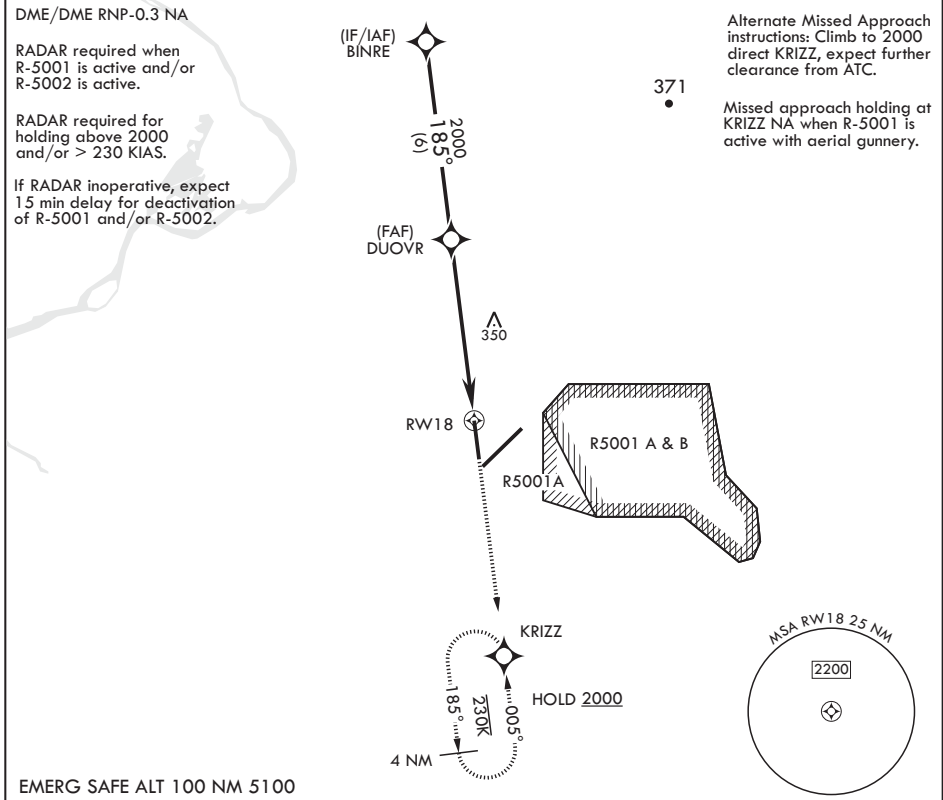
RNAV (GPS) RWY 18

APCH CRS	Rwy Idg	7126
185°	TDZE	123
	Arpt Elev	141

AL-150 (USAF)
MC GUIRE FIELD (JOINT BASE MC GUIRE DIX LAKEHURST) (KWRI)

<p>▼ * Circling NA SE of Rwy 24 and E of Rwy 36 when R-5001 A/B Active.</p>	<p>MISSED APPROACH: Climb to 2000 direct KRIZZ and hold.</p>
---	--

<p>ATIS 110.6 270.1</p>	<p>MC GUIRE APP CON/DEP CON 126.475 363.8</p>	<p>TOWER 118.65 255.6</p>	<p>GND CON 121.8 275.8</p>	<p>CLNC DEL 135.2 335.8</p>	<p>PAR</p>
-----------------------------	---	-------------------------------	--------------------------------	---------------------------------	------------



<p>2000</p> <p>↑</p> <p>KRIZZ</p>		<p>ELEV 141</p>	<p>TDZE 123</p>																		
<p>BINRE</p> <p>DUOVR</p> <p>2000</p> <p>185°</p> <p>3.10° TCH 68</p>																					
<p>1.3 NM to RW18</p> <p>5.5 NM</p>	<p>RW18</p>																				
<p>4 NM</p> <p>0.05°</p> <p>230K</p> <p>185°</p> <p>HOLD 2000</p>	<p>MSA RW18 25 NM</p> <p>2200</p>																				
<table border="1"> <thead> <tr> <th>CATEGORY</th> <th>A</th> <th>B</th> <th>C</th> <th>D</th> <th>E</th> </tr> </thead> <tbody> <tr> <td>LNAV MDA</td> <td>600-1</td> <td>477 (500-1)</td> <td>600-1½</td> <td>477 (500-1½)</td> <td></td> </tr> <tr> <td>C CIRCLING*</td> <td>680-1</td> <td>539 (600-1)</td> <td>700-1½ 559 (600-1½)</td> <td>700-2 559 (600-2)</td> <td>1200-3 1059 (1100-3)</td> </tr> </tbody> </table>	CATEGORY	A	B	C	D	E	LNAV MDA	600-1	477 (500-1)	600-1½	477 (500-1½)		C CIRCLING*	680-1	539 (600-1)	700-1½ 559 (600-1½)	700-2 559 (600-2)	1200-3 1059 (1100-3)	<p>HIRL all Rwy's REIL Rwy's 18, 36 TDZL/CL Rwy 6</p>		
CATEGORY	A	B	C	D	E																
LNAV MDA	600-1	477 (500-1)	600-1½	477 (500-1½)																	
C CIRCLING*	680-1	539 (600-1)	700-1½ 559 (600-1½)	700-2 559 (600-2)	1200-3 1059 (1100-3)																

WRIGHTSTOWN, NEW JERSEY

MC GUIRE FIELD (JOINT BASE MC GUIRE DIX LAKEHURST) (KWRI)

Amdt 6 18MAY23

40°01'N - 74°36'W

RNAV (GPS) RWY 18

NE-2, 28 NOV 2024 to 26 DEC 2024

NE-2, 28 NOV 2024 to 26 DEC 2024