

# WILDCAT SIX DEPARTURE

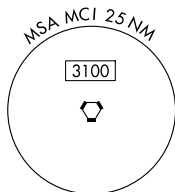
AL-152 (FAA)

SHERMAN AAF (F'L V)  
FORT LEAVENWORTH, KANSAS

KANSAS CITY DEP CON  
124.7 284.7

RADAR required.

**TOP ALTITUDE:**  
**10000**

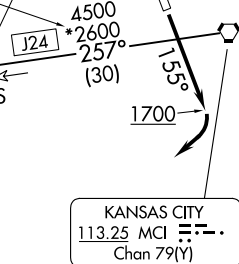


ST JOSEPH  
115.5 STJ ---  
Chan 102

SALINA  
117.1 SLN ---  
Chan 118

\*3100 when using Salina  
or Wichita Transition.

4500  
\*2600  
257°  
(79)



KANSAS CITY  
113.25 MCI ---  
Chan 79(Y)

KENTN

TYTUS

EMPORIA  
112.8 EMP ---  
Chan 75

TAKEOFF MINIMUMS  
Rwys 16, 34: Standard.

WICHITA  
113.8 ICT ---  
Chan 85

NOTE: Chart not to scale.

NC-2, 28 NOV 2024 to 26 DEC 2024

NC-2, 28 NOV 2024 to 26 DEC 2024

## DEPARTURE ROUTE DESCRIPTION

TAKEOFF RUNWAY 16: Climb on heading 155° to 1700 before turning southwest, thence . . . .

. . . climb on assigned heading for RADAR vectors to appropriate route. Maintain 10000, expect filed altitude 10 minutes after departure.

TAKEOFF RUNWAY 34: Climb on assigned heading for RADAR vectors to appropriate route. Maintain 10000, expect filed altitude 10 minutes after departure.

KENTN TRANSITION (WLDCT6.KENTN): From over MCI VORTAC on MCI R-257 to KENTN.

SALINA TRANSITION (WLDCT6.SLN): From over MCI VORTAC on MCI R-257 and SLN R-073 to SLN VORTAC.

WICHITA TRANSITION (WLDCT6.ICT): From over MCI VORTAC on MCI R-257 to KENTN, then on ICT R-035 to ICT VORTAC.

# WILDCAT SIX DEPARTURE