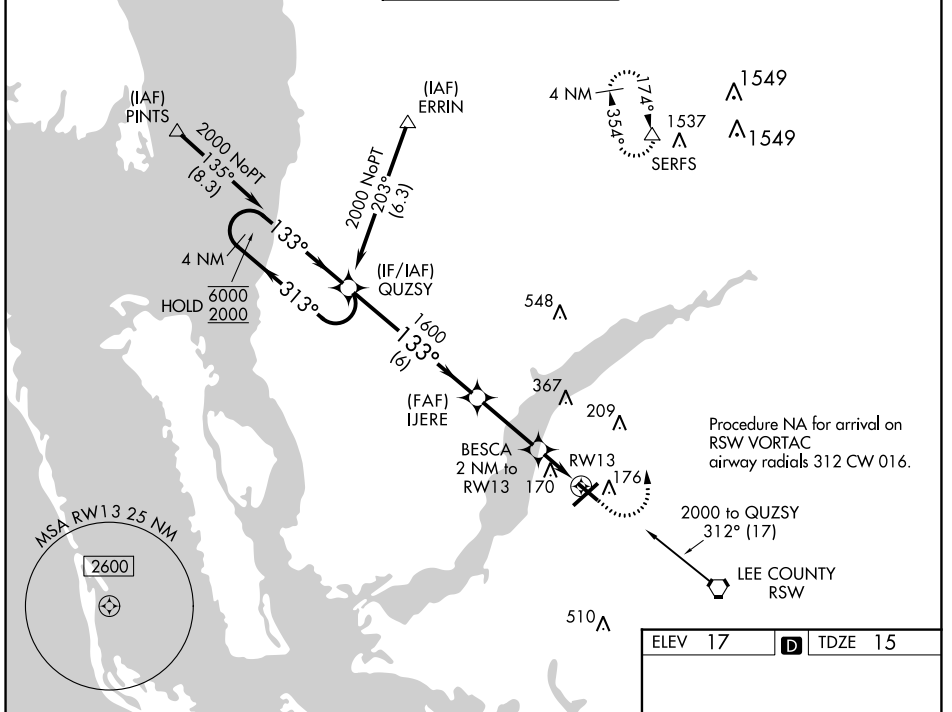


WAAS CH 73024 W13A	APP CRS 133°	Rwy Idg 4296 TDZE 15 Apt Elev 17
--	------------------------	---

RNAV (GPS) RWY 13

PAGE FLD (FMYY)

RNP APCH. ▼ When Circling to Rwy 31 at night, operational VGSI required, remain on or above VGSI glidepath until threshold. For uncompensated Baro-VNAV systems, LNAV/VNAV NA below -15°C or above 54°C.		MISSED APPROACH: Climb to 500 then climbing left turn to 2600 direct SERFS and hold.		
ATIS 123.725	FORT MYERS APP CON ★ 125.15 306.2 (Rwys 5, 13) 126.8 306.2 (Rwys 23, 31)	PAGE TOWER ★ 119.0 (CTAF) 306.95	GND CON 121.7	CLNC DEL 121.7



SE-3, 28 NOV 2024 to 26 DEC 2024

SE-3, 28 NOV 2024 to 26 DEC 2024

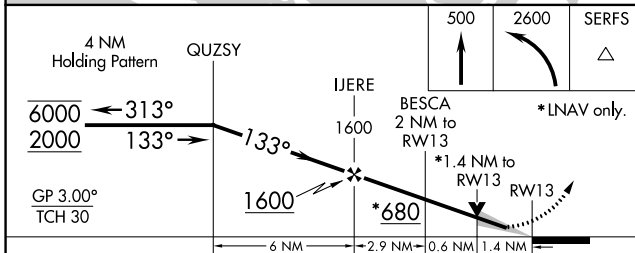
ELEV 17	TDZE 15
---------	---------

Procedure NA for arrival on RSW VORTAC airway radials 312 CW 016.

2000 to QUZSY 312° (17)

LEE COUNTY RSW

REIL Rwys 5, 13, 23 and 31
MIRL Rwy 5-23 and 13-31



CATEGORY	A	B	C	D
LPV DA	265-1		250 (300-1)	
LNAV/VNAV DA	480-1½		465 (500-1½)	
LNAV MDA	480-1		465 (500-1½)	
CIRCLING	540-1 523 (600-1)		600-1½ 680-2 583 (600-1½) 663 (700-2)	