

RNAV (GPS) RWY 4

| | | |
|----------|------------|------|
| APCH CRS | Rwy ldg | 4503 |
| 044° | TDZE | 1066 |
| | Arprt Elev | 1066 |

AL-155 [USA]

MARSHALL AAF (KFRI)

RNAV APCH - GPS

ODALS

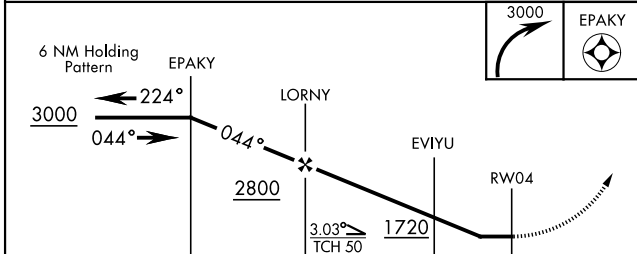
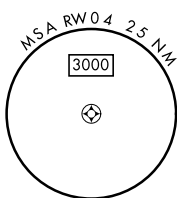
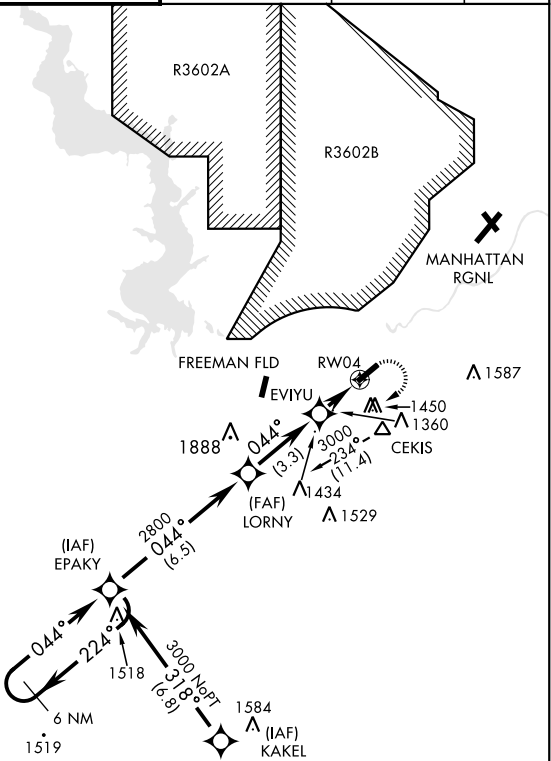


MISSED APPROACH: Climbing right turn to 3000 direct EPAKY and hold.

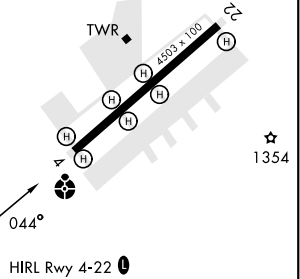
- * When ALS inop increase CAT CD vis to 1 3/4 miles.
- ** Circling not authorized NW of Rwy 4-22.
- NA Visibility reduction by helicopters NA

| | | | | | |
|---------|---------------|-----------------------|--------------|----------|---------|
| ATIS ★ | MARSHALL GCA | TOWER ★ | GND CON | CLNC DEL | ASR/PAR |
| 121.025 | 121.25 254.35 | 126.2 (CTAF) 0 248.65 | 140.20 229.4 | 119.65 | |

Procedure NA for arrival at CEKIS via V4-508 eastbound.



| | |
|-----------|-----------|
| ELEV 1066 | TDZE 1066 |
|-----------|-----------|



| CATEGORY | A | B | C | D |
|-------------|--------------------|--------------------|----------------------------|----------------------------|
| LNNAV MDA * | 1660-1 594 (600-1) | 1660-1 594 (600-1) | 1660-1 5/8 594 (600-1 5/8) | 1900-2 3/4 834 (900-2 3/4) |
| CIRCLING ** | 1700-1 634 (700-1) | 1760-1 694 (700-1) | 1760-2 694 (700-2) | 1900-2 3/4 834 (900-2 3/4) |

RNAV (GPS) RWY 4

NC-2, 28 NOV 2024 to 26 DEC 2024

NC-2, 28 NOV 2024 to 26 DEC 2024