

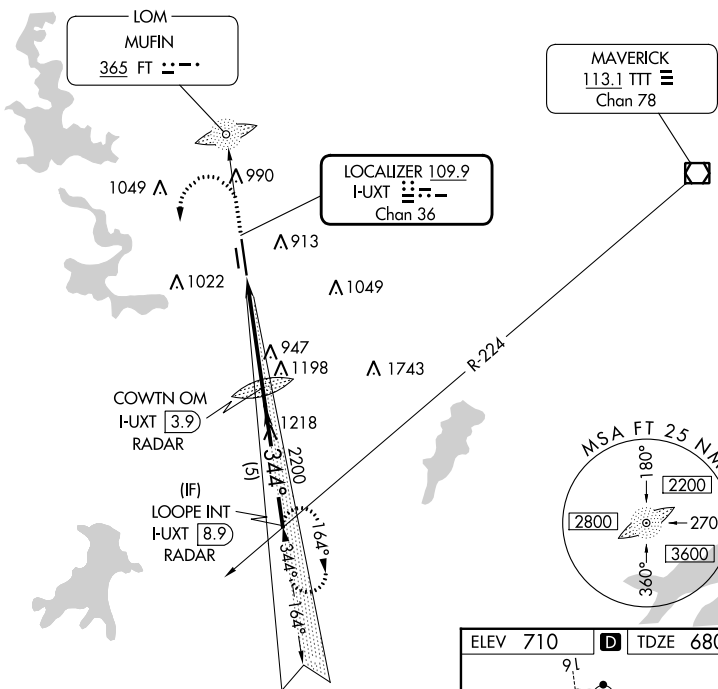
LOC I-UXT 109.9 Chan 36	APP CRS 344°	Rwy Idg TDZE Apt Elev	7455 680 710
--------------------------------------	------------------------	-----------------------------	---

ILS or LOC RWY 34

FORT WORTH MEACHAM INTL (FTW)

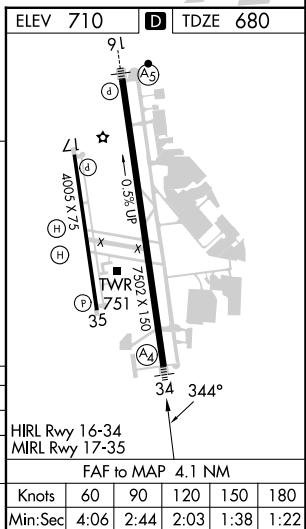
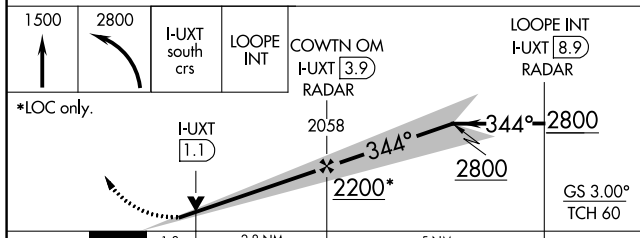
Inoperative table does not apply to S-LOC 34 Cat C.		MALS 	MISSED APPROACH : Climb to 1500, then climbing left turn to 2800 via I-UXT south course to LOOPE Int/ I-UXT 8.9 DME and hold.	
---	--	----------	---	--

ATIS 120.7	LONE STAR APP CON (North) 118.1 306.95 (South) 135.975 379.9	MEACHAM TOWER 118.3 257.8	GND CON 121.9	CLNC DEL 124.65
----------------------	--	-------------------------------------	-------------------------	---------------------------



RADAR REQUIRED

△ 1772



SC-2, 28 NOV 2024 to 26 DEC 2024

SC-2, 28 NOV 2024 to 26 DEC 2024