

KUSSO ONE DEPARTURE (RNAV)
(KUSSO1 .KUSSO) 24MAR22

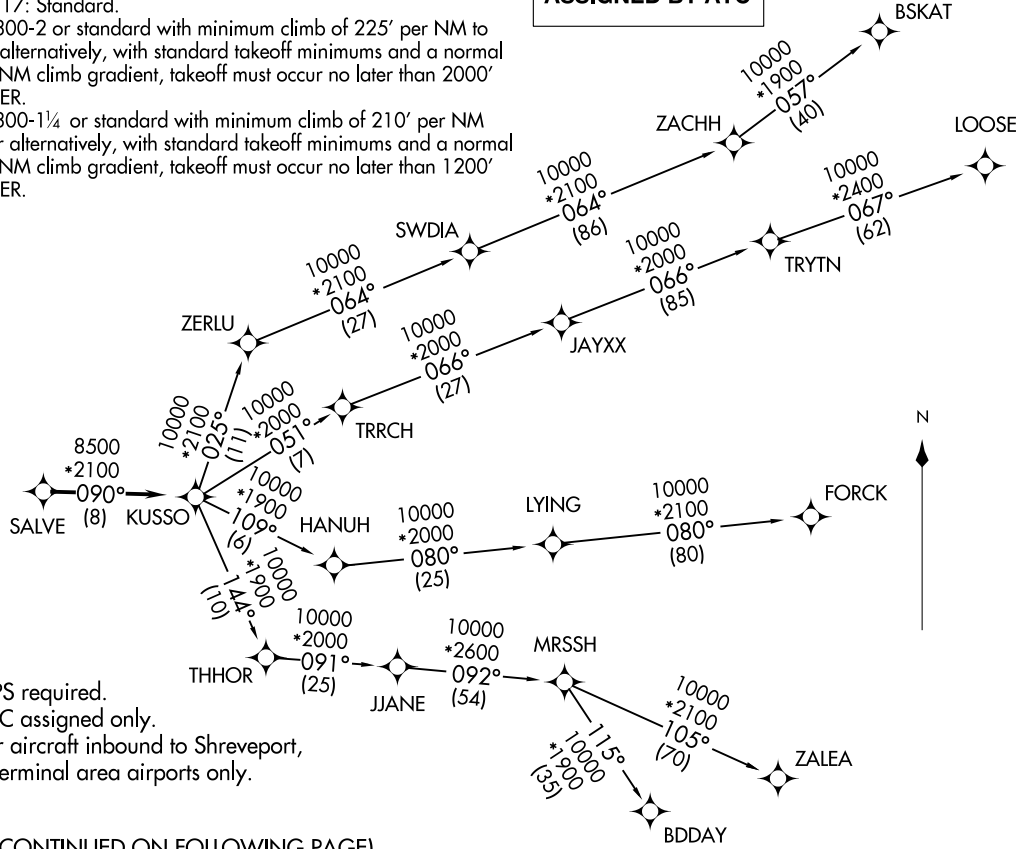
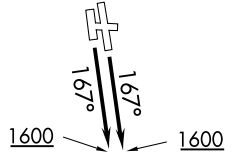
FORT WORTH, TEXAS
FORT WORTH MEACHAM INTL (F'WV)

LONE STAR DEP CON
118.1 306.95 (NORTH)
135.975 379.9 (SOUTH)
ATIS
120.7
CLNC DEL
124.65
GND CON
121.9
MEACHAM TOWER
118.3 257.8

TAKEOFF MINIMUMS

Rwys 16, 17: Standard.
Rwy 34: 300-2 or standard with minimum climb of 225' per NM to 1100, or alternatively, with standard takeoff minimums and a normal 200' per NM climb gradient, takeoff must occur no later than 2000' prior to DER.
Rwy 35: 300-1¼ or standard with minimum climb of 210' per NM to 900, or alternatively, with standard takeoff minimums and a normal 200' per NM climb gradient, takeoff must occur no later than 1200' prior to DER.

**TOP ALTITUDE:
ASSIGNED BY ATC**



- NOTE: RADAR required.
- NOTE: RNAV 1.
- NOTE: DME/DME/IRU or GPS required.
- NOTE: BDDAY transition: ATC assigned only.
- NOTE: MRSSH transition: For aircraft inbound to Shreveport, Jackson and Monroe terminal area airports only.

(CONTINUED ON FOLLOWING PAGE)

NOTE: Chart not to scale.

(KUSSO1 .KUSSO) 24305
KUSSO ONE DEPARTURE (RNAV)

FORT WORTH MEACHAM INTL (F'WV)
FORT WORTH, TEXAS

KUSSO ONE DEPARTURE (RNAV)



DEPARTURE ROUTE DESCRIPTION

TAKEOFF RUNWAYS 16, 17: Climb on heading 167° to 1600 before proceeding on course.

When entering controlled airspace, fly heading assigned by ATC, expect vector to SALVE, then on track 090° to KUSSO, then on assigned transition. Maintain ATC assigned altitude, expect filed altitude 10 minutes after departure.

- BDDAY TRANSITION (KUSSO1.BDDAY)
- BSKAT TRANSITION (KUSSO1.BSKAT)
- FORCK TRANSITION (KUSSO1.FORCK)
- LOOSE TRANSITION (KUSSO1.LOOSE)
- MRSSH TRANSITION (KUSSO1.MRSSH)
- ZALEA TRANSITION (KUSSO1.ZALEA)

SC-2, 28 NOV 2024 to 26 DEC 2024

SC-2, 28 NOV 2024 to 26 DEC 2024