

GARLAND FIVE DEPARTURE
(GARLS.TTT) 25JAN24

FORT WORTH, TEXAS
FORT WORTH NAS JRB (CARSWELL FLD) (NFWT)

LONE STAR DEP CON
125.8 257.95
ATIS *
351.675
CLNC DEL
126.4 254.325
GND CON
121.675 279.575
NAVY FORT WORTH TOWER *
120.95 269.325

**TOP ALTITUDE:
ASSIGNED BY ATC**

RADAR and DME required.

(GARLS.TTT) 24305
GARLAND FIVE DEPARTURE

AL-160 (FAA)

FORT WORTH NAS JRB (CARSWELL FLD) (NFWT)
FORT WORTH, TEXAS

TAKEOFF MINIMUMS
Refer to appropriate military service directives.

NOTE: SOLDO Transition: ATC assigned.

NOTE: Chart not to scale.

MAVERICK
113.1 TTT
Chan 78

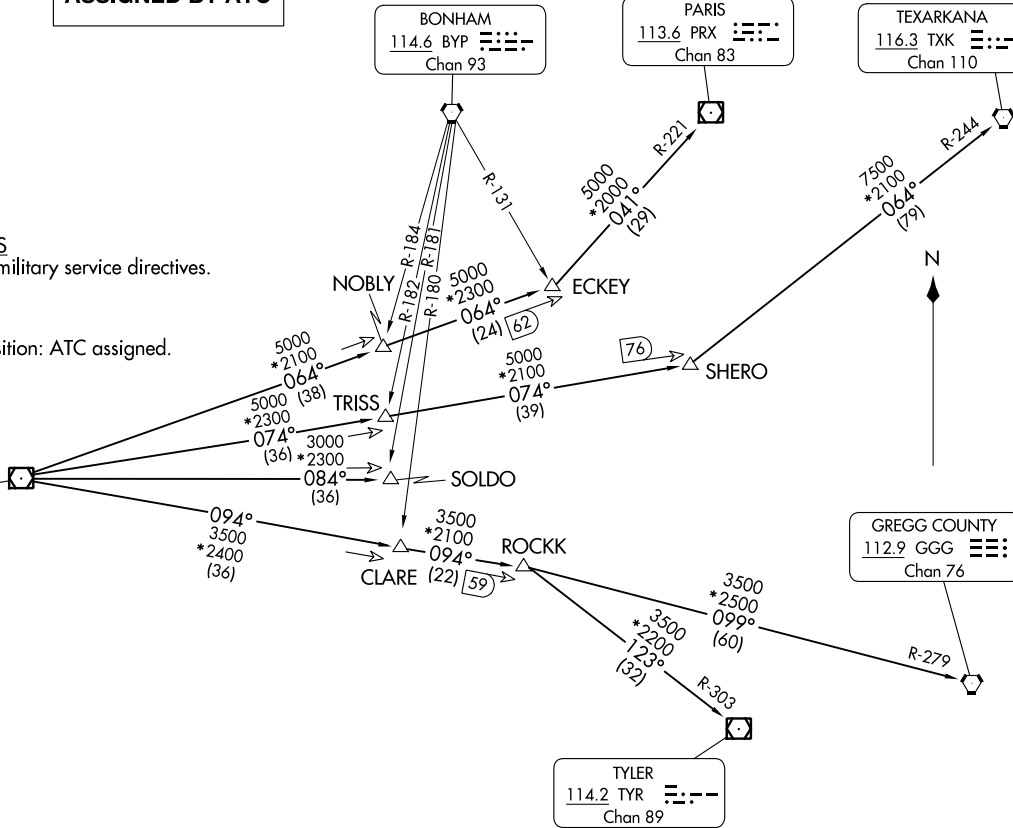
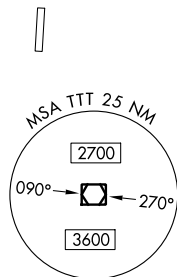
BONHAM
114.6 BYP
Chan 93

PARIS
113.6 PRX
Chan 83

TEXARKANA
116.3 TXK
Chan 110

GREGG COUNTY
112.9 GGG
Chan 76

TYLER
114.2 TYR
Chan 89



(CONTINUED ON FOLLOWING PAGE)



DEPARTURE ROUTE DESCRIPTION

When entering controlled airspace, fly assigned heading for RADAR vectors to appropriate route. Maintain ATC assigned altitude.

GREGG COUNTY TRANSITION (GARL5.GGG): From over TTT VOR/DME on TTT R-094 to ROCKK, then on GGG R-279 to GGG VORTAC.

PARIS TRANSITION (GARL5.PRX): From over TTT VOR/DME on TTT R-064 to ECKEY, then on PRX R-221 to PRX VOR/DME.

SOLDO TRANSITION (GARL5.SOLDO): From over TTT VOR/DME on TTT R-084 to SOLDO.

TEXARKANA TRANSITION (GARL5.TXK): From over TTT VOR/DME on TTT R-074 to SHERO, then on TXK R-244 to TXK VORTAC.

TYLER TRANSITION (GARL5.TYR): From over TTT VOR/DME on TTT R-094 to ROCKK, then on TYR R-303 to TYR VOR/DME.

SC-2, 28 NOV 2024 to 26 DEC 2024

SC-2, 28 NOV 2024 to 26 DEC 2024