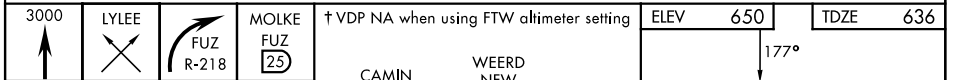
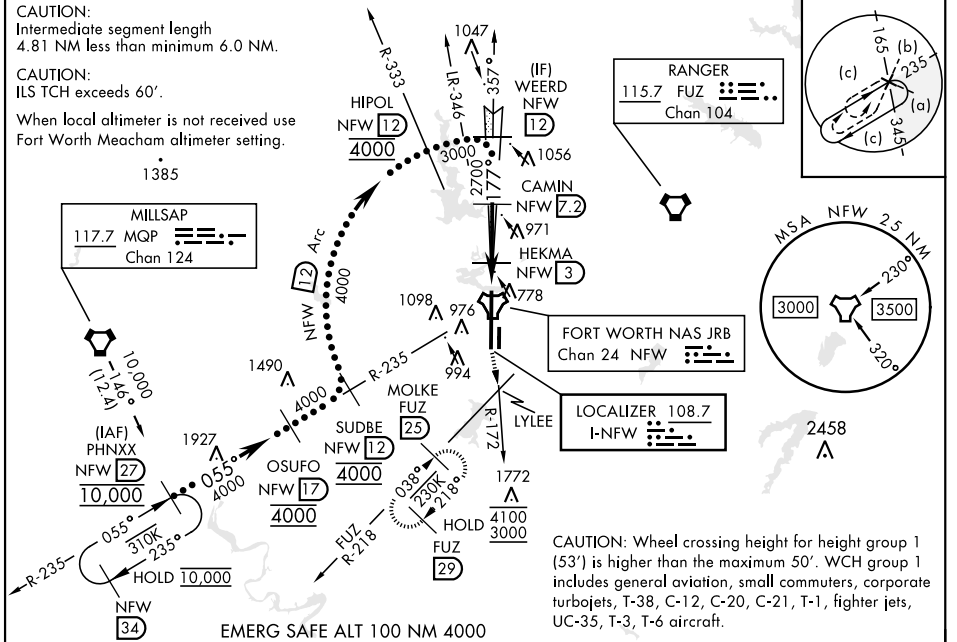


# HI-ILS Y or LOC Y RWY 18

LOC I-NFW <b>108.7</b>	APCH CRS <b>177°</b>	Rwy Ldg <b>11,999</b> TDZE <b>636</b> Arpt Elev <b>650</b>	[USN]	FORT WORTH NAS JRB (CARSWELL FLD) (KNFW)
---------------------------	-------------------------	--	-------	--

FUZ VORTAC or RADAR required.  
 \* Circling not authorized E of Rwy 18-36.  
 MISSED APPROACH: Climb to 3000 direct LYLEE to intercept FUZ VORTAC R-218 to MOLKE and hold.

ATIS★ <b>351.675</b>	LONE STAR APP CON <b>125.8 257.95</b>	NAVY FORT WORTH TOWER★ <b>120.950 269.325</b>	GND CON <b>121.675 279.575</b>	CLNC DEL <b>126.4 254.325</b>	ASR/PAR
-------------------------	--	--	-----------------------------------	----------------------------------	---------



CATEGORY	C	D	E
S-ILS 18	836-¾	200 (200-¾)	
S-LOC 18	1040-1⅞	404 (400-1⅞)	
<b>C</b> CIRCLING*	1320-1¾ 670 (700-1¾)	1340-2¼ 690 (700-2¼)	1440-2¾ 790 (800-2¾)

FORT WORTH MEACHAM ALTIMETER			
S-ILS 18	856-¾	220 (300-¾)	
S-LOC 18	1060-1¼	424 (500-1¼)	
<b>C</b> CIRCLING*	1340-2 690 (700-2)	1360-2¼ 710 (800-2¼)	1460-2¾ 810 (900-2¾)

FORT WORTH, TEXAS      32° 46' N-97° 26' W      FORT WORTH NAS JRB (CARSWELL FLD) (KNFW)

# HI-ILS Y or LOC Y RWY 18

SC-2, 28 NOV 2024 to 26 DEC 2024

SC-2, 28 NOV 2024 to 26 DEC 2024