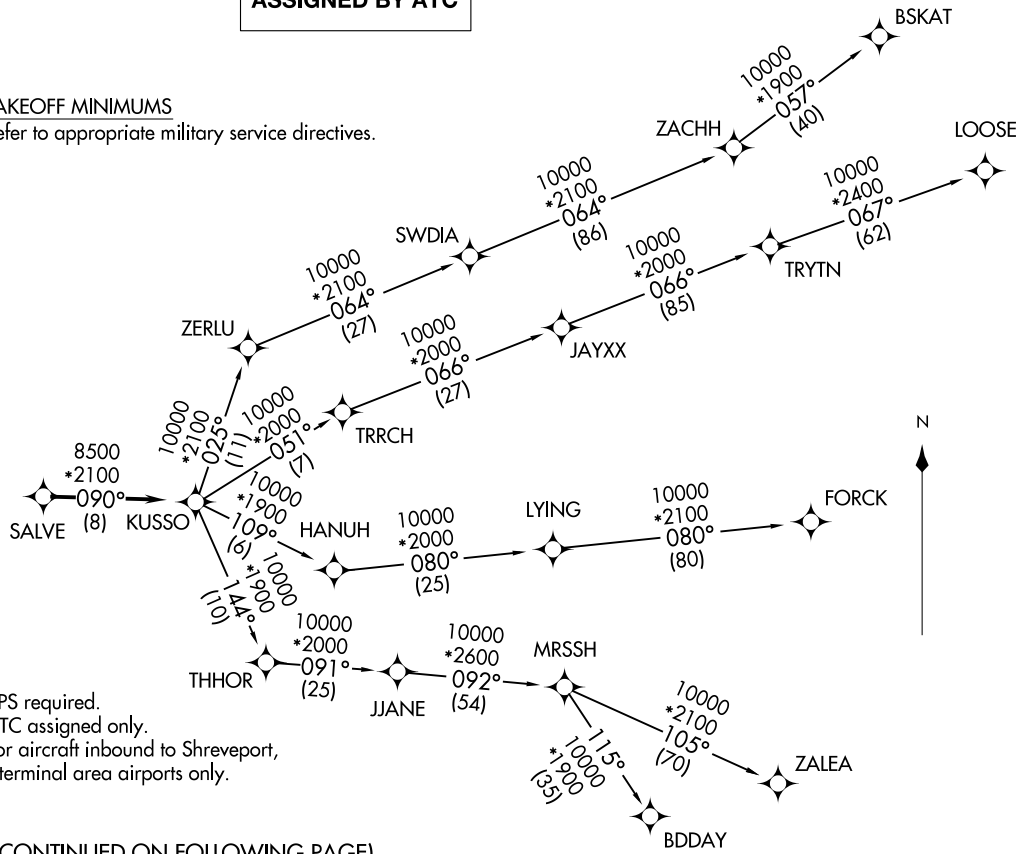


**TOP ALTITUDE:  
ASSIGNED BY ATC**

LONE STAR DEP CON  
125.8 257.95  
ATIS ★  
351.675  
CLNC DEL  
126.4 254.325  
GND CON  
121.675 279.575  
NAVY FORT WORTH TOWER ★  
120.95 269.325

**TAKEOFF MINIMUMS**  
Refer to appropriate military service directives.



- NOTE: RADAR required.
- NOTE: RNAV 1.
- NOTE: DME/DME/IRU or GPS required.
- NOTE: BDDAY Transition: ATC assigned only.
- NOTE: MRSSH Transition: For aircraft inbound to Shreveport, Jackson and Monroe terminal area airports only.

(CONTINUED ON FOLLOWING PAGE)

NOTE: Chart not to scale.

KUSSO ONE DEPARTURE (RNAV)  
(KUSSO1, KUSSO) 24MAR22

FORT WORTH, TEXAS  
FORT WORTH NAS JRB (CARSWELL FLD) (NFWW)

(KUSSO1, KUSSO) 24305  
KUSSO ONE DEPARTURE (RNAV)

AL-160 (FAA) FORT WORTH NAS JRB (CARSWELL FLD) (NFWW)  
FORT WORTH, TEXAS

# KUSSO ONE DEPARTURE (RNAV)



## DEPARTURE ROUTE DESCRIPTION

When entering controlled airspace, fly heading assigned by ATC, expect vector to SALVE, then on track 090° to KUSSO, then on assigned transition. Maintain ATC assigned altitude, expect filed altitude 10 minutes after departure.

- BDDAY TRANSITION (KUSSO1.BDDAY)
- BSKAT TRANSITION (KUSSO1.BSKAT)
- FORCK TRANSITION (KUSSO1.FORCK)
- LOOSE TRANSITION (KUSSO1.LOOSE)
- MRSSH TRANSITION (KUSSO1.MRSSH)
- ZALEA TRANSITION (KUSSO1.ZALEA)

SC-2, 28 NOV 2024 to 26 DEC 2024

SC-2, 28 NOV 2024 to 26 DEC 2024