

# NANDR TWO DEPARTURE (RNAV)

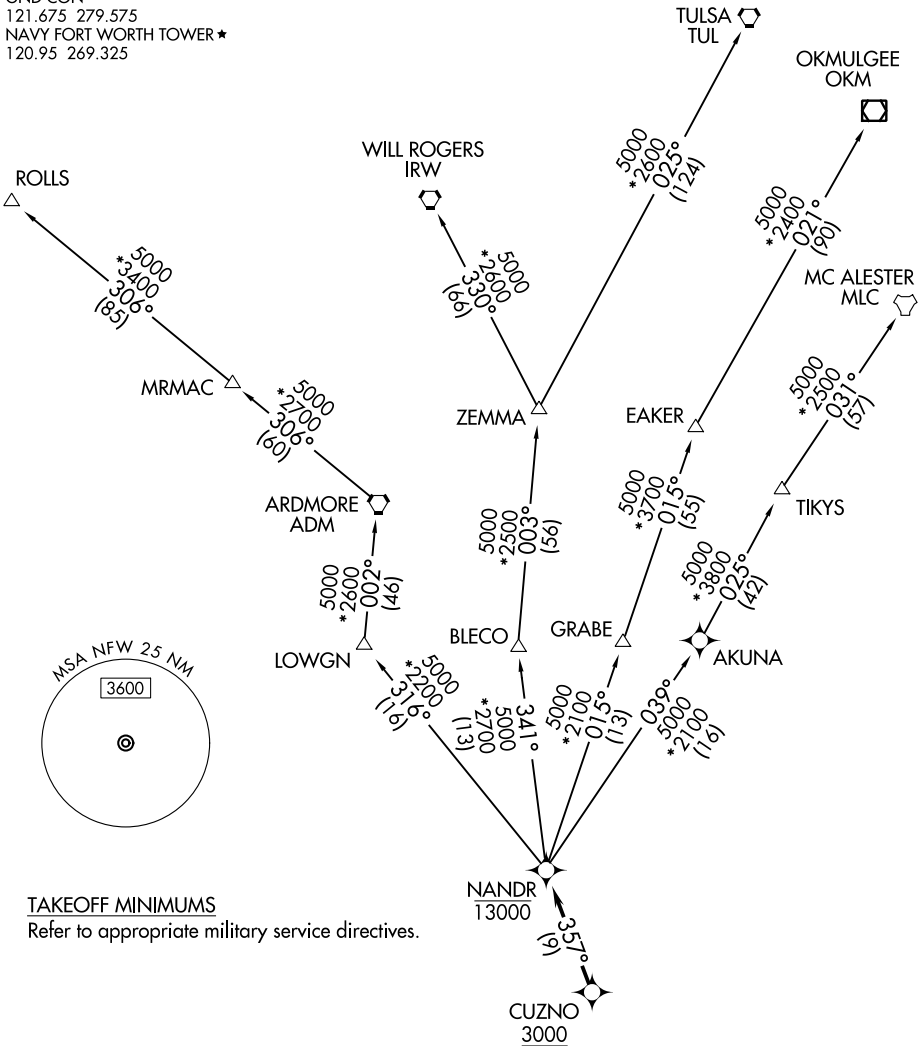
FORT WORTH, TEXAS

LONE STAR DEP CON  
 125.8 257.95  
 ATIS\*  
 351.675  
 GND CON  
 121.675 279.575  
 NAVY FORT WORTH TOWER\*  
 120.95 269.325

RNAV 1 - DME/DME/IRU or GPS.

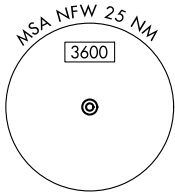
RADAR required.

**TOP ALTITUDE:  
ASSIGNED BY ATC**



SC-2, 28 NOV 2024 to 26 DEC 2024

SC-2, 28 NOV 2024 to 26 DEC 2024



### TAKEOFF MINIMUMS

Refer to appropriate military service directives.



NOTE: EAKER transition: For TUL terminal arrivals only.  
 NOTE: TULSA transition: For all aircraft overflying TUL VORTAC.  
 NOTE: Aircraft arriving to the Oklahoma City terminal area, file and expect the ZEMMA enroute transition.

NOTE: Chart note to scale.

(CONTINUED ON FOLLOWING PAGE)

# NANDR TWO DEPARTURE (RNAV)

FORT WORTH, TEXAS



DEPARTURE ROUTE DESCRIPTION

TAKEOFF RUNWAY 18: Climb on heading 177° or as assigned by ATC, thence . . . .

TAKEOFF RUNWAY 36: Climb on heading 357° or as assigned by ATC, thence . . . .

. . . . expect RADAR vectors to cross CUZNO at or above 3000, then on track 357° to cross NANDR at or below 13000, then on assigned transition.

EAKER TRANSITION (NANDR2.EAKER)

MC ALESTER TRANSITION (NANDR2.MLC)

OKMULGEE TRANSITION (NANDR2.OKM)

ROLLS TRANSITION (NANDR2.ROLLS)

TULSA TRANSITION (NANDR2.TUL)

WILL ROGERS TRANSITION (NANDR2.IRW)

ZEMMA TRANSITION (NANDR2.ZEMMA)

SC-2, 28 NOV 2024 to 26 DEC 2024

SC-2, 28 NOV 2024 to 26 DEC 2024