

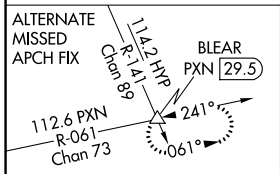
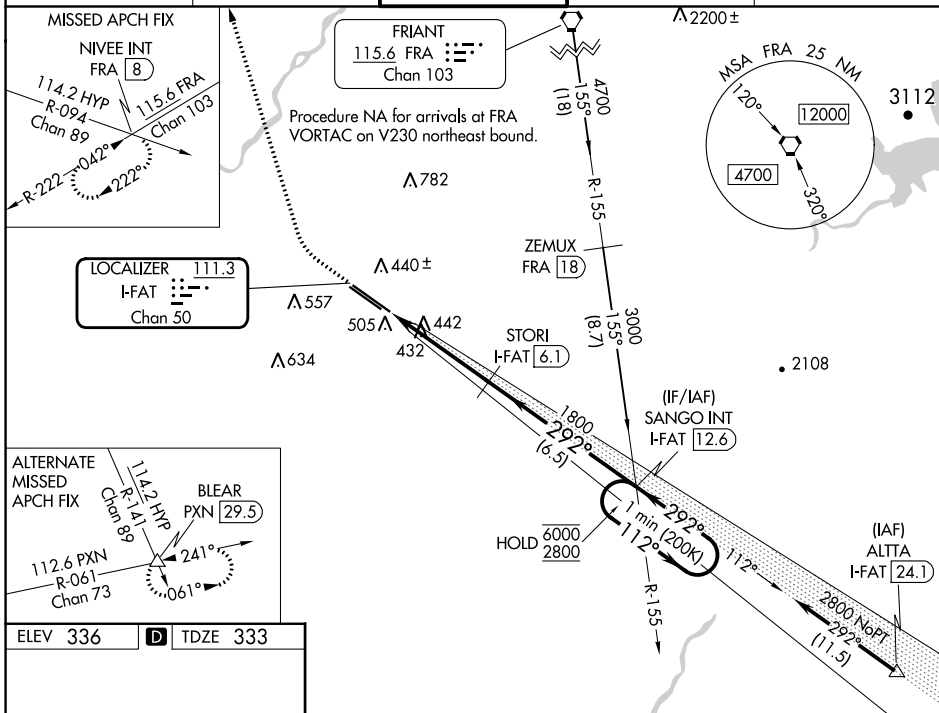
LOC/DME I-FAT <b>111.3</b> Chan 50	APP CRS <b>292°</b>	Rwy Idg TDZE Apt Elev	<b>9227</b> <b>333</b> <b>336</b>
--	------------------------	-----------------------------	---

# ILS Y RWY 29R (SA CAT I)

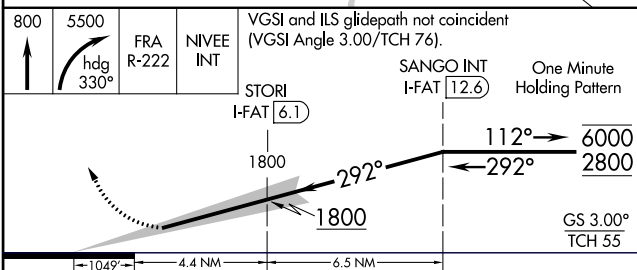
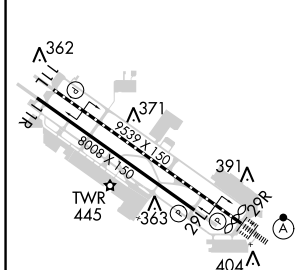
FRESNO YOSEMITE INTL (FAT)

Requires specific OPSPEC, MSPEC, or LOA approval and use of HUD to DH.	ALSF-2	MISSED APPROACH: Climb to 800 then climbing right turn to 5500 on heading 330° and FRA VORTAC R-222 to NIVEE INT/FRA 8 DME and hold, continue climb-in-hold to 5500.

ATIS <b>121.35 273.6</b>	FRESNO APP CON <b>119.6 351.95</b>	FRESNO TOWER <b>118.2 251.1</b>	GND CON <b>121.7 348.6</b>	CLNC DEL <b>124.35 348.6</b>
-----------------------------	---------------------------------------	------------------------------------	-------------------------------	---------------------------------



ELEV 336	<b>D</b>	TDZE 333
----------	----------	----------



CATEGORY	A	B	C	D
S-ILS 29R	RA 151/14 150 DA 483			

**SA CATEGORY I ILS - SPECIAL AIRCREW & AIRCRAFT CERTIFICATION REQUIRED**

REIL Rwy 11L and 11R  
HIRL Rwy 11L-29R  
MIRL Rwy 11R-29L  
TDZ/CL Rwy 29R

SW-2, 28 NOV 2024 to 26 DEC 2024

SW-2, 28 NOV 2024 to 26 DEC 2024