

ALEXANDRIA THREE DEPARTURE
(AEX3.AEX) 07OCT21

(AEX3.AEX) 24137
ALEXANDRIA THREE DEPARTURE

A1-164 (FAA)

SCHOLES INTL AT GALVESTON (G1LS)
GALVESTON, TEXAS

**TOP ALTITUDE:
ASSIGNED BY ATC**

ASOS
123.95
CLNC DEL (When twr closed)
135.35
GND CON
118.625
GALVESTON TOWER ★
120.575 (CTAF)
HOUSTON DEP CON
134.45 284.0

LUFKIN
112.1 LFK
Chan 58

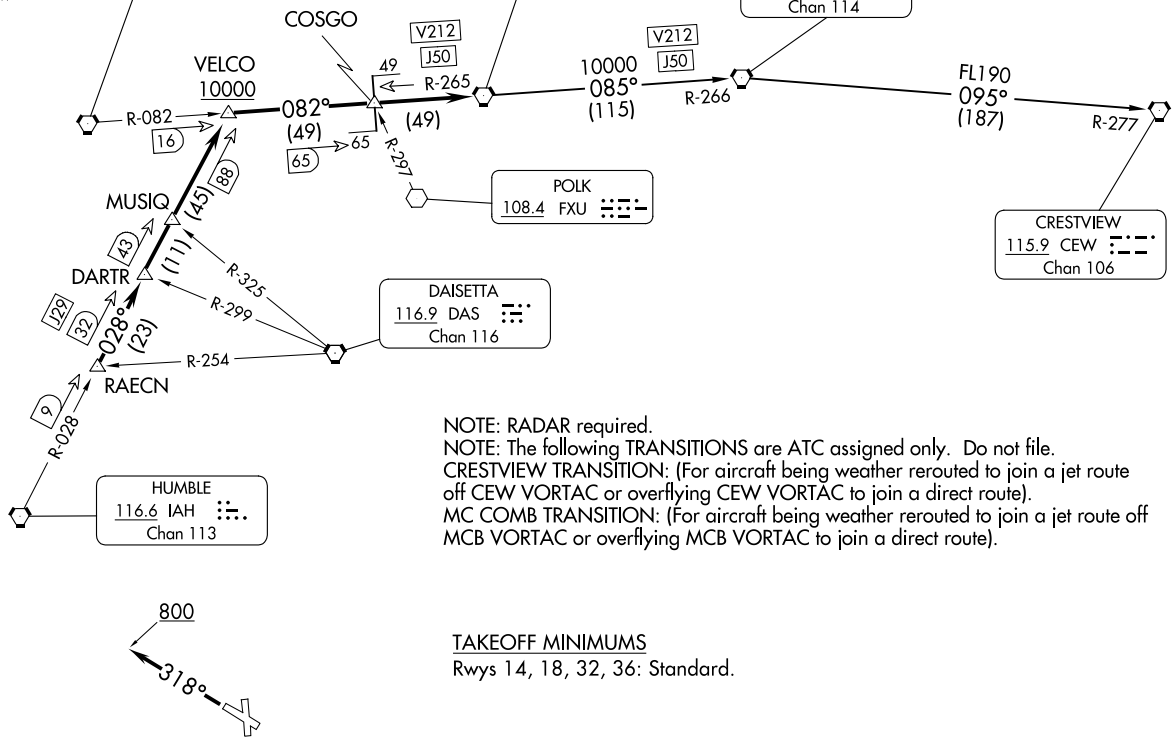
ALEXANDRIA
116.1 AEX
Chan 108

MC COMB
116.7 MCB
Chan 114

POLK
108.4 FXU

DAISETTA
116.9 DAS
Chan 116

HUMBLE
116.6 IAH
Chan 113



NOTE: RADAR required.
 NOTE: The following TRANSITIONS are ATC assigned only. Do not file.
 CRESTVIEW TRANSITION: (For aircraft being weather rerouted to join a jet route off CEW VORTAC or overflying CEW VORTAC to join a direct route).
 MC COMB TRANSITION: (For aircraft being weather rerouted to join a jet route off MCB VORTAC or overflying MCB VORTAC to join a direct route).

TAKEOFF MINIMUMS
 Rwy's 14, 18, 32, 36: Standard.

NOTE: Chart not to scale.

(CONTINUED ON FOLLOWING PAGE)

SCHOLES INTL AT GALVESTON (G1LS)
GALVESTON, TEXAS

ALEXANDRIA THREE DEPARTURE



DEPARTURE ROUTE DESCRIPTION

TAKEOFF RUNWAYS 14, 18, 36: When entering controlled airspace, climb on assigned heading for RADAR vectors to RAECN INT. Maintain ATC assigned altitude. Expect filed altitude 10 minutes after departure, thence. . . .

TAKEOFF RUNWAY 32: Climb on heading 318° to 800 before turning. When entering controlled airspace, climb on assigned heading for RADAR vectors to RAECN INT. Maintain ATC assigned altitude. Expect filed altitude 10 minutes after departure, thence. . . .

. . . . on IAH R-028 to VELCO INT, cross VELCO INT at or above 10000, then right turn on LFK R-082 and AEX R-265 to AEX VORTAC.

CRESTVIEW TRANSITION (AEX3.CEW): From over AEX VORTAC on AEX R-085 and MCB R-266 to MCB VORTAC, then on MCB R-095 and CEW R-277 to CEW VORTAC.

MC COMB TRANSITION (AEX3.MCB): From over AEX VORTAC on AEX R-085 and MCB R-266 to MCB VORTAC.

SC-5, 28 NOV 2024 to 26 DEC 2024

SC-5, 28 NOV 2024 to 26 DEC 2024