

RNAV 1 - DME/DME/IRU or GPS.
RADAR required.

**TOP ALTITUDE:
ASSIGNED BY ATC**

TAKEOFF MINIMUMS
Rwys 14, 18, 32, 36:
Standard with minimum
climb of 500'/NM to 520.

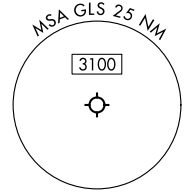
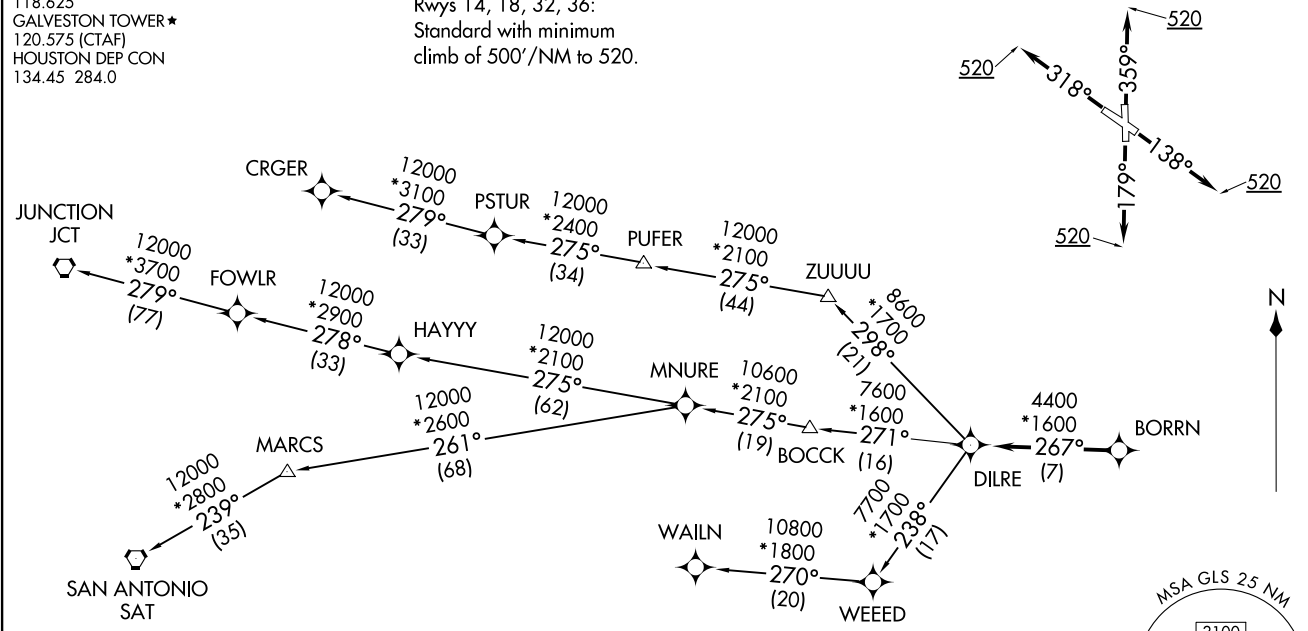
ASOS
123.95
CLNIC DEL (When twr closed)
135.35
GND CON
118.625
GALVESTON TOWER★
120.575 (CTAF)
HOUSTON DEP CON
134.45 284.0

BORRN SIX DEPARTURE (RNAV)
(BORRN6.BORRN) 30NOV23

BORRN SIX DEPARTURE (RNAV)
(BORRN6.BORRN) 23334

SCHOLES INTL AT GALVESTON (GLS)
GALVESTON, TEXAS

AL-164 (FAA)
SCHOLES INTL AT GALVESTON (GLS)
GALVESTON, TEXAS



NOTE: CRGER-TRANSITION ATC assigned only
for aircraft departing 54T, AXH, EFD, GLS,
HPY, IWS, LBX, LVJ, SGR, TME, TØØ, T41.

(NARRATIVE ON FOLLOWING PAGE)

NOTE: Chart not to scale.

BORRN SIX DEPARTURE (RNAV)



DEPARTURE ROUTE DESCRIPTION

TAKEOFF RUNWAY 14: Climb on heading 138° to 520, for RADAR vectors to BORRN, thence. . . .

TAKEOFF RUNWAY 18: Climb on heading 179° to 520, for RADAR vectors to BORRN, thence. . . .

TAKEOFF RUNWAY 32: Climb on heading 318° to 520, for RADAR vectors to BORRN, thence. . . .

TAKEOFF RUNWAY 36: Climb on heading 359° to 520, for RADAR vectors to BORRN, thence. . . .

. . . .on track 267° to DILRE, then on (transition). Maintain ATC assigned altitude. Expect filed altitude 10 minutes after departure.

CRGER TRANSITION (BORRN6.CRGER)

JUNCTION TRANSITION (BORRN6.JCT)

MNURE TRANSITION (BORRN6.MNURE)

SAN ANTONIO TRANSITION (BORRN6.SAT)

WAILN TRANSITION (BORRN6.WAILN)

SC-5, 28 NOV 2024 to 26 DEC 2024

SC-5, 28 NOV 2024 to 26 DEC 2024