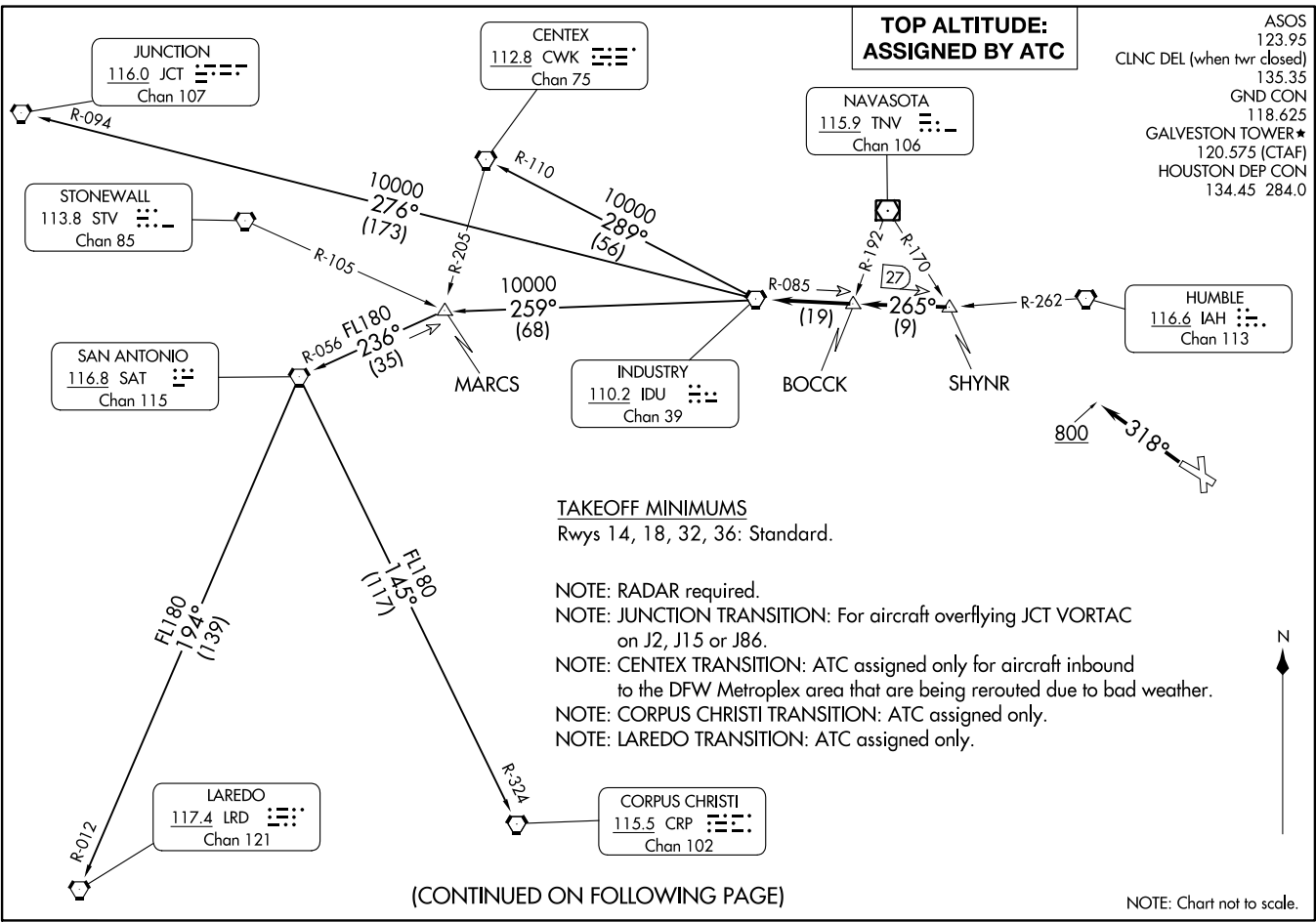


INDUSTRY ONE DEPARTURE
(IDU1, IDU) 07OCT21

SCHOLES INTL AT GALVESTON (G1LS)
GALVESTON, TEXAS



(CONTINUED ON FOLLOWING PAGE)

(IDU1, IDU) 24137
INDUSTRY ONE DEPARTURE

A1-164 (FAA)

SCHOLES INTL AT GALVESTON (G1LS)
GALVESTON, TEXAS



DEPARTURE ROUTE DESCRIPTION

TAKEOFF RUNWAYS 14, 18, 36: When entering controlled airspace, climb on assigned heading for RADAR vectors to SHYNR INT. Maintain ATC assigned altitude. Expect filed altitude 10 minutes after departure, thence

TAKEOFF RUNWAY 32: Climb on heading 318° to 800 before turning. When entering controlled airspace, climb on assigned heading for RADAR vectors to SHYNR INT. Maintain ATC assigned altitude. Expect filed altitude 10 minutes after departure, thence

. . . . on IDU R-085 to BOCCK INT, then on IDU R-085 to IDU VORTAC.

CENTEX TRANSITION (IDU1.CWK): From over IDU VORTAC on IDU R-289 and CWK R-110 to CWK VORTAC.

CORPUS CHRISTI TRANSITION (IDU1.CRP): From over IDU VORTAC on IDU R-259 to MARCS INT, then on SAT R-056 to SAT VORTAC, then on SAT R-145 and CRP R-324 to CRP VORTAC.

JUNCTION TRANSITION (IDU1.JCT): From over IDU VORTAC on IDU R-276 and JCT R-094 to JCT VORTAC.

LAREDO TRANSITION (IDU1.LRD): From over IDU VORTAC on IDU R-259 to MARCS INT, then on SAT R-056 to SAT VORTAC, then on SAT R-194 and LRD R-012 to LRD VORTAC.

SC-5, 28 NOV 2024 to 26 DEC 2024

SC-5, 28 NOV 2024 to 26 DEC 2024