

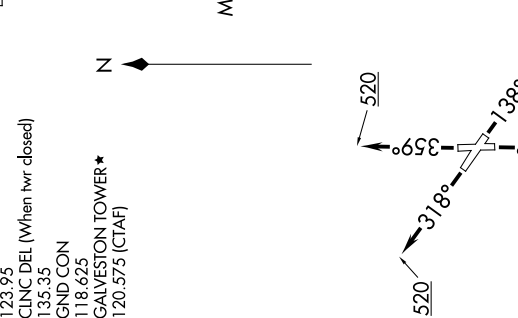
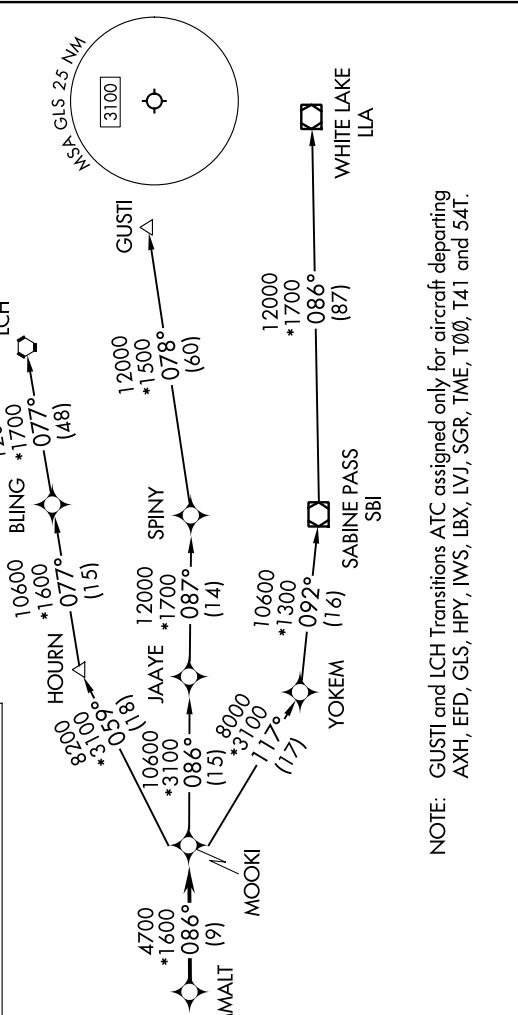
MMALT SEVEN DEPARTURE (RNAV)

SC-5, 28 NOV 2024 to 26 DEC 2024

**TOP ALTITUDE:
ASSIGNED BY ATC**

RNAV 1 - DME/DME/IRU or GPS.
RADAR required.

HOUSTON DEP CON
134.45 284.0
ASOS
123.95
CLNC DEL (When twr closed)
135.35
GND CON
118.625
GALVESTON TOWER*
120.575 (CTAF)



TAKEOFF MINIMUMS
Rwys 14, 18, 32, 36: Standard with minimum climb of 500'/NM to 520.

DEPARTURE ROUTE DESCRIPTION

TAKEOFF RUNWAY 14: Climb on heading 138° to 520, for RADAR vectors to MMALT, thence. . . .

TAKEOFF RUNWAY 18: Climb on heading 179° to 520, for RADAR vectors to MMALT, thence. . . .

TAKEOFF RUNWAY 32: Climb on heading 318° to 520, for RADAR vectors to MMALT, thence. . . .

TAKEOFF RUNWAY 36: Climb on heading 359° to 520, for RADAR vectors to MMALT, thence. . . .

. . . on track 086° to MOOKI, then on (transition). Maintain ATC assigned altitude.
Expect filed altitude 10 minutes after departure.

GUSTI TRANSITION (MMALT7.GUSTI)
LAKE CHARLES TRANSITION (MMALT7.LCH)
WHITE LAKE TRANSITION (MMALT7.LLA)

NOTE: GUSTI and LCH Transitions ATC assigned only for aircraft departing AXH, EFD, GLS, HPY, IWS, LBX, LVJ, SGR, TME, T00, T41 and 54T.

SC-5, 28 NOV 2024 to 26 DEC 2024

NOTE: Chart not to scale.