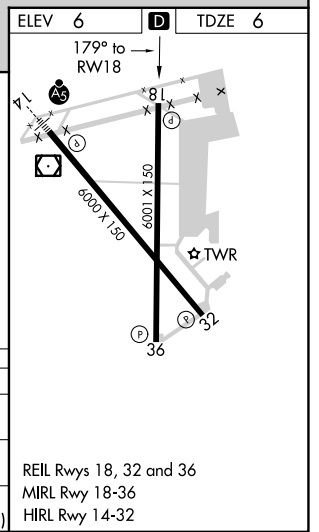
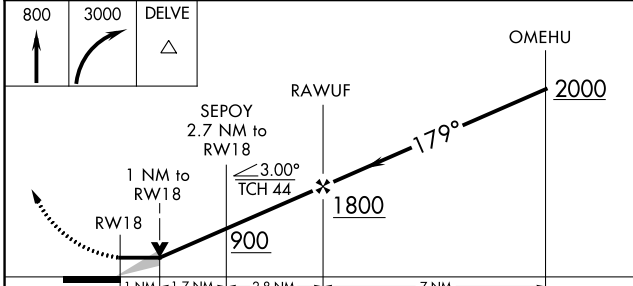
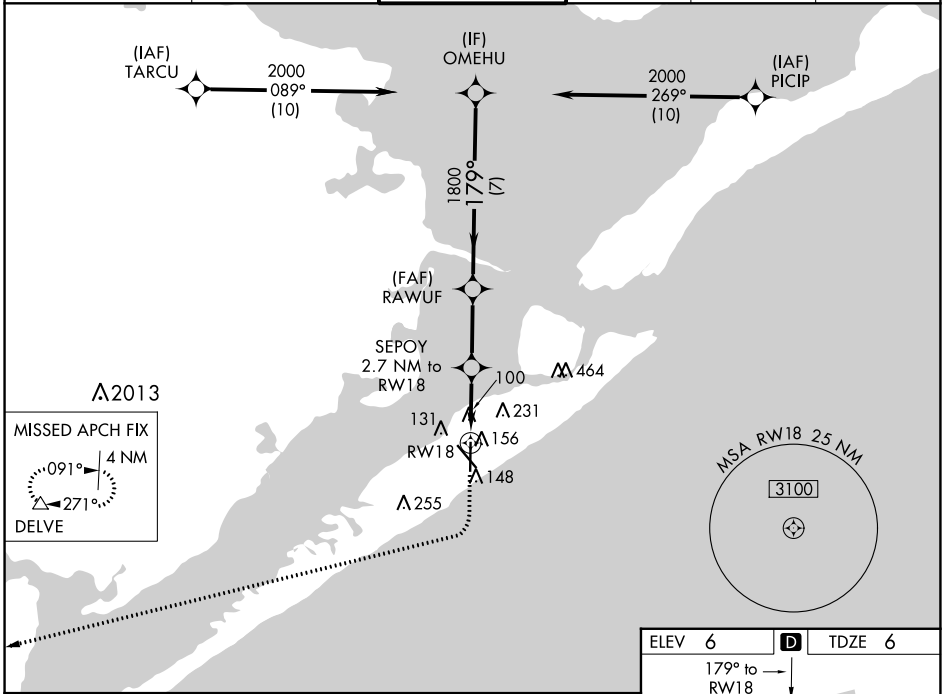


WAAS CH 82301 W18A	APP CRS 179°	Rwy Idg TDZE Apt Elev	6001 6 6
--	------------------------	-----------------------------	-------------------------------------

RNAV (GPS) RWY 18

SCHOLES INTL AT GALVESTON (GLS)

RNP APCH.		MISSED APPROACH: Climb to 800 then climbing right turn to 3000 direct DELVE and hold.			
<p>Circling NA east of Rwy 18 and northeast of Rwy 32.</p>					
ASOS 123.95	HOUSTON APP CON 134.45 284.0	GALVESTON TOWER * 120.575 (CTAF)	GND CON 118.625	CLNC DEL 135.35 <small>(When twr closed)</small>	UNICOM 123.05



CATEGORY	A	B	C	D	E
LP MDA	360-1		354 (400-1)		
LNAV MDA	420-1	414 (500-1)	420-1½	414 (500-1½)	
CIRCLING	500-1 494 (500-1)	520-1 514 (600-1)	620-1¾ 614 (700-1¾)	620-2 614 (700-2)	620-2¼ 614 (700-2¼)

SC-5, 28 NOV 2024 to 26 DEC 2024

SC-5, 28 NOV 2024 to 26 DEC 2024