

AIRPORT DIAGRAM

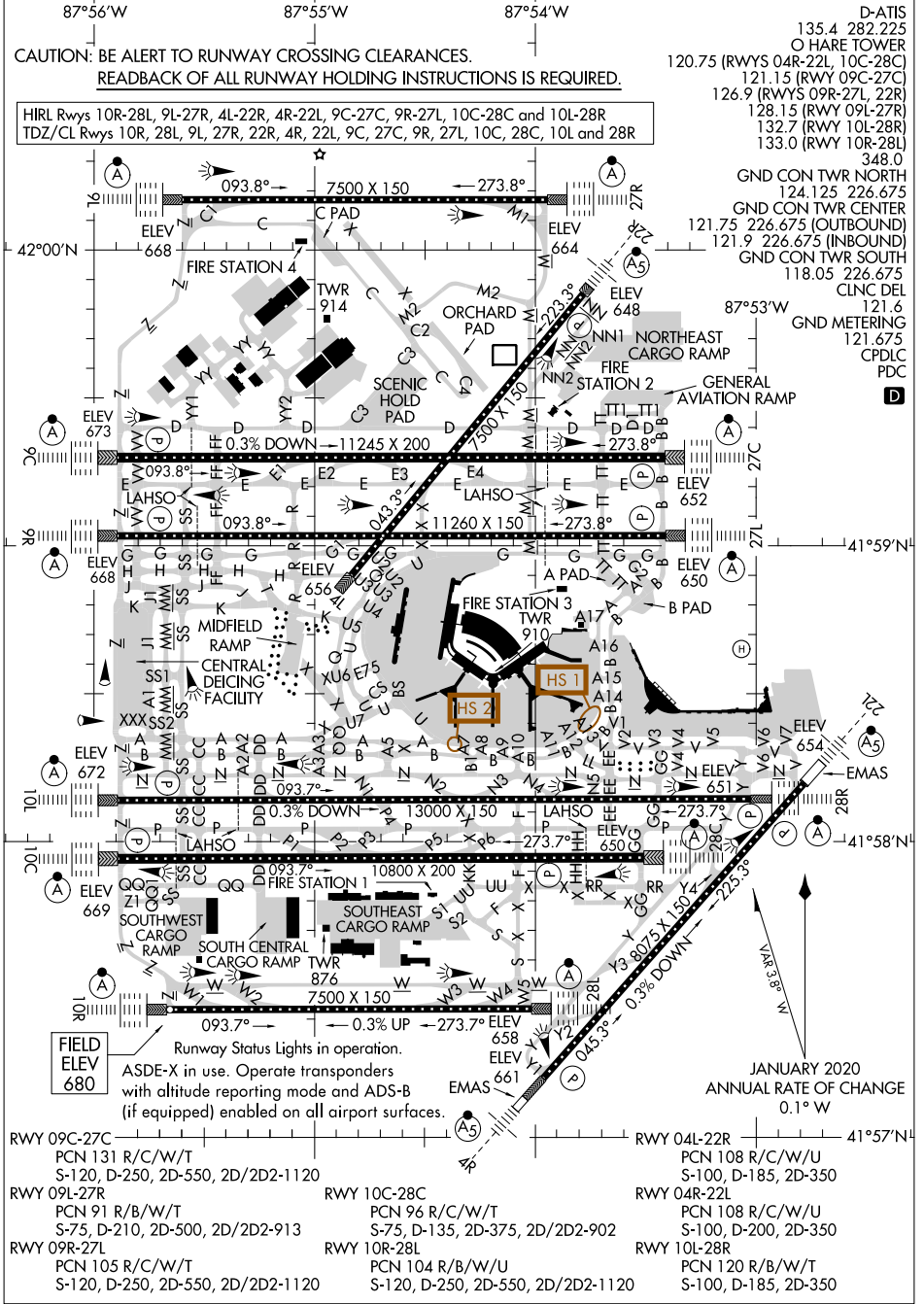
AL-166 (FAA)

CHICAGO O'HARE INTL (O.R.D)
CHICAGO, ILLINOIS

CAUTION: BE ALERT TO RUNWAY CROSSING CLEARANCES.

READBACK OF ALL RUNWAY HOLDING INSTRUCTIONS IS REQUIRED.

HIRL Rwyws 10R-28L, 9L-27R, 4L-22R, 4R-22L, 9C-27C, 9R-27L, 10C-28C and 10L-28R
TDZ/CL Rwyws 10R, 28L, 9L, 27R, 22R, 4R, 22L, 9C, 27C, 9R, 27L, 10C, 28C, 10L and 28R



- D-ATIS 135.4 282.225
- O HARE TOWER 120.75 (RWYS 04R-22L, 10C-28C)
- 121.15 (RWY 09C-27C)
- 126.9 (RWYS 09R-27L, 22R)
- 128.15 (RWY 09L-27R)
- 132.7 (RWY 10L-28R)
- 133.0 (RWY 10R-28L)
- 348.0
- GND CON TWR NORTH 124.125 226.675
- GND CON TWR CENTER 121.75 226.675 (OUTBOUND)
- 121.9 226.675 (INBOUND)
- GND CON TWR SOUTH 118.05 226.675
- CLNC DEL 121.6
- GND METERING 121.675
- CPDLC PDC

EC-3, 28 NOV 2024 to 26 DEC 2024

EC-3, 28 NOV 2024 to 26 DEC 2024

Runway Status Lights in operation.
ASDE-X in use. Operate transponders with altitude reporting mode and ADS-B (if equipped) enabled on all airport surfaces.

JANUARY 2020
ANNUAL RATE OF CHANGE
0.1° W

AIRPORT DIAGRAM

CHICAGO, ILLINOIS
CHICAGO O'HARE INTL (O.R.D)