

(NARRATIVE ON FOLLOWING PAGE)

D-ATIS
135.4 282.225
CHICAGO APP CON
119.0 292.125

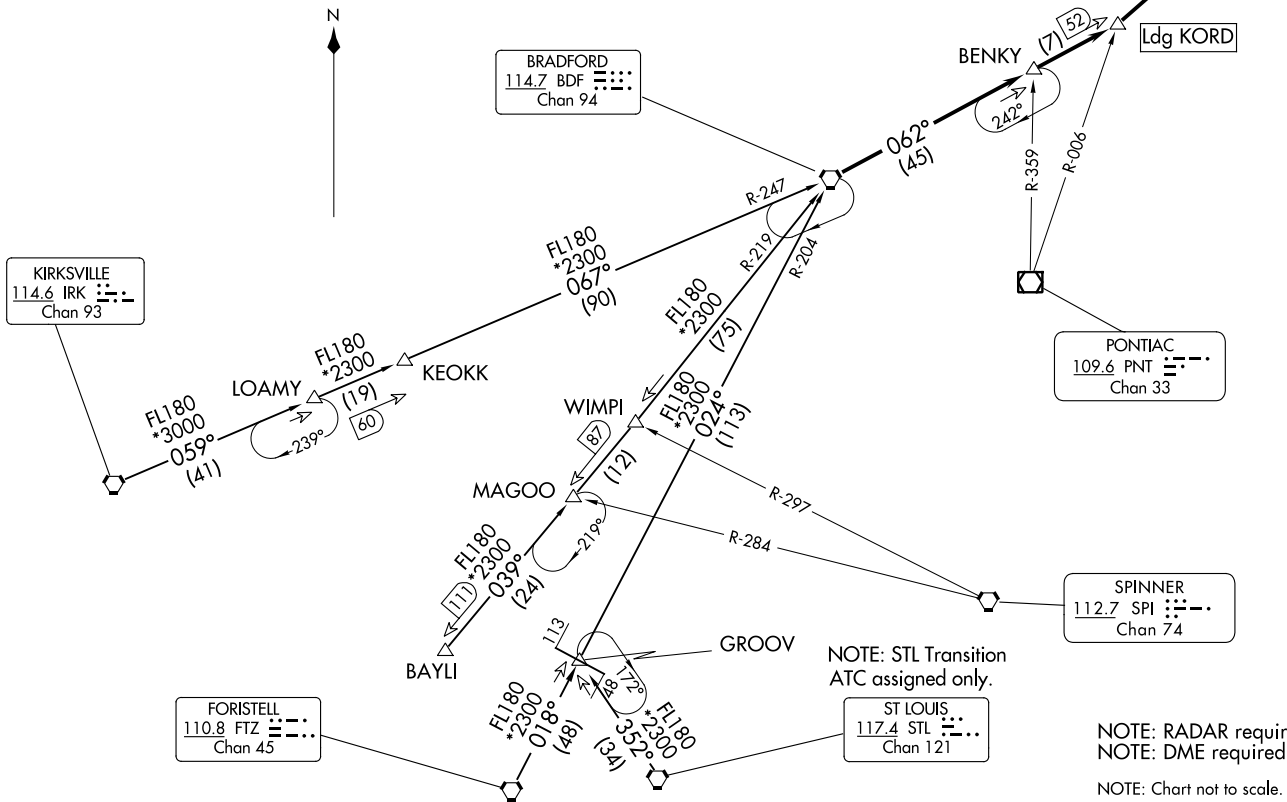
BRADFORD EIGHT ARRIVAL
(BDF.BDF8) 20ARR23

(BDF.BDF8) 23334
BRADFORD EIGHT ARRIVAL

AI-166 (FAA)

CHICAGO O'HARE INTL (ORD)
CHICAGO, ILLINOIS

CHICAGO, ILLINOIS
CHICAGO O'HARE INTL (ORD)



NOTE: RADAR required.
NOTE: DME required.
NOTE: Chart not to scale.

NOTE: STL Transition
ATC assigned only.

ARRIVAL DESCRIPTION

BAYLI TRANSITION (BAYLI.BDF8): From over BAYLI on BDF R-219 to BDF VORTAC.

Thence....

FORISTELL TRANSITION (FTZ.BDF8): From over FTZ VORTAC on FTZ R-018 to GROOV, then on BDF R-204 to BDF VORTAC. Thence....

KIRKSVILLE TRANSITION (IRK.BDF8): From over IRK VORTAC on IRK R-059 and BDF R-247 to BDF VORTAC. Thence....

ST LOUIS TRANSITION (STL.BDF8): From over STL VORTAC on STL R-352 to GROOV, then on BDF R-204 to BDF VORTAC. Thence....

....from over BDF VORTAC on BDF R-062 to cross NEWRK at 11000, then on heading 050°. Expect radar vectors to final approach course.

EC-3, 28 NOV 2024 to 26 DEC 2024

EC-3, 28 NOV 2024 to 26 DEC 2024