

# ILS RWY 22L (SA CAT I & II) CHICAGO O'HARE INTL (ORD)

LOC I-LQQ <b>110.1</b>	APP CRS <b>225°</b>	Rwy ldg TDZE Apt Elev <b>8075</b> <b>654</b> <b>680</b>
---------------------------	------------------------	--

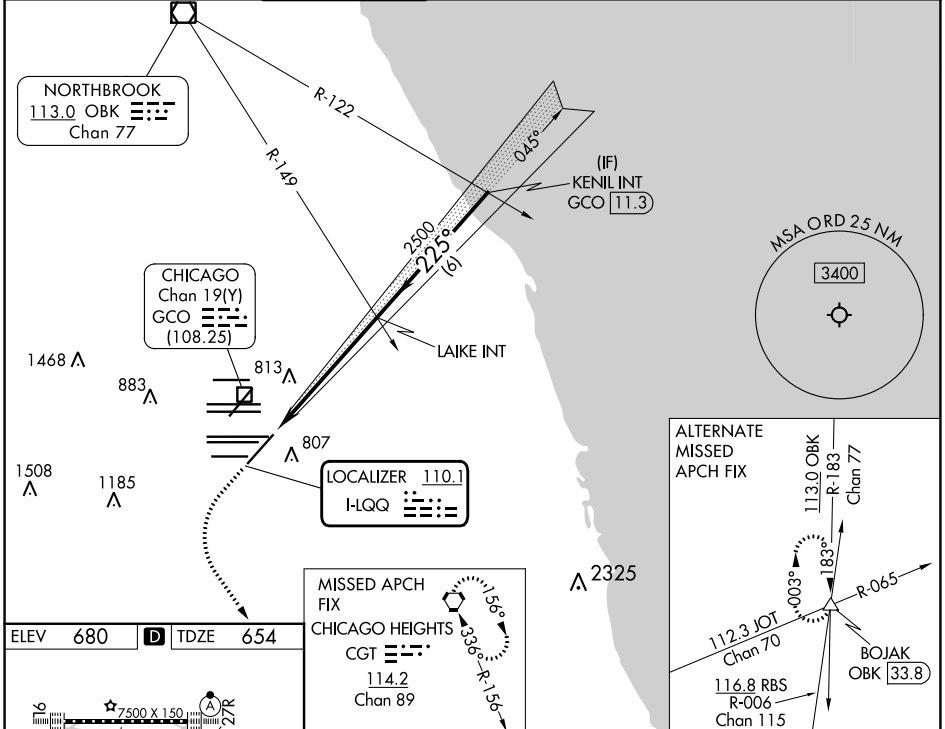
RADAR required for procedure entry.

Simultaneous approach authorized.  
SA CAT I: Requires specific OPSPEC, MSPEC, or LOA approval and use of HUD to DH.  
SA CAT II: Reduced lighting: Requires specific OPSPEC, MSPEC, or LOA approval and use of autoland or HUD to touchdown.



MISSED APPROACH:  
Climb to 1100 then climbing left turn to 4000 direct CGT VORTAC and hold.

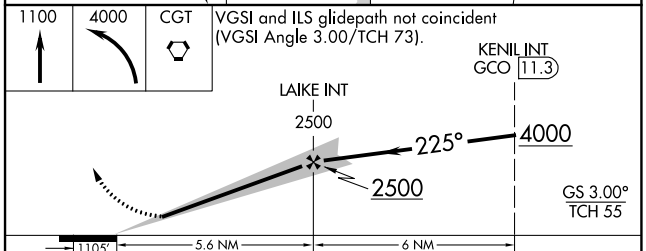
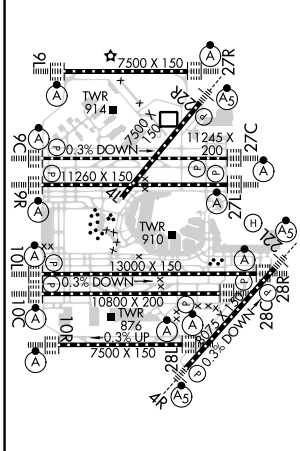
D-ATIS <b>135.4</b> <b>282.225</b>	CHICAGO APP CON <b>119.0 292.125</b>	O'HARE TOWER <b>120.75 348.0</b>	GND CON (TWR NORTH) <b>124.125</b> (TWR SOUTH) <b>118.05</b> (ALL TWRs) <b>226.675</b>	(TWR CENTER) <b>121.75</b> (OBND) <b>121.9</b> (IBND)	CLNC DEL <b>121.6</b>	CPDLC
--	---	-------------------------------------	---	---	--------------------------	-------



ELEV 680	<b>D</b>	TDZE 654
----------	----------	----------

MISSED APCH FIX  
CHICAGO HEIGHTS  
CGT **114.2**  
Chan 89

ALTERNATE MISSED APCH FIX



CATEGORY	A	B	C	D
S-ILS 22L	SA CAT I	RA 164/16	150 DA 804	
S-ILS 22L	SA CAT II	RA 112/12	100 DA 754	

**SA CATEGORY I & II ILS - SPECIAL AIRCREW & AIRCRAFT CERTIFICATION REQUIRED**

EC-3, 28 NOV 2024 to 26 DEC 2024

EC-3, 28 NOV 2024 to 26 DEC 2024