

CHICAGO, ILLINOIS

AL-166 (FAA)

24305

LOC/DME I-IAC	APP CRS	Rwy Idg	11260
110.5	273°	TDZE	654
Chan 42		Apt Elev	680

# ILS RWY 27L (CAT II & III)

CHICAGO O'HARE INTL (ORD)

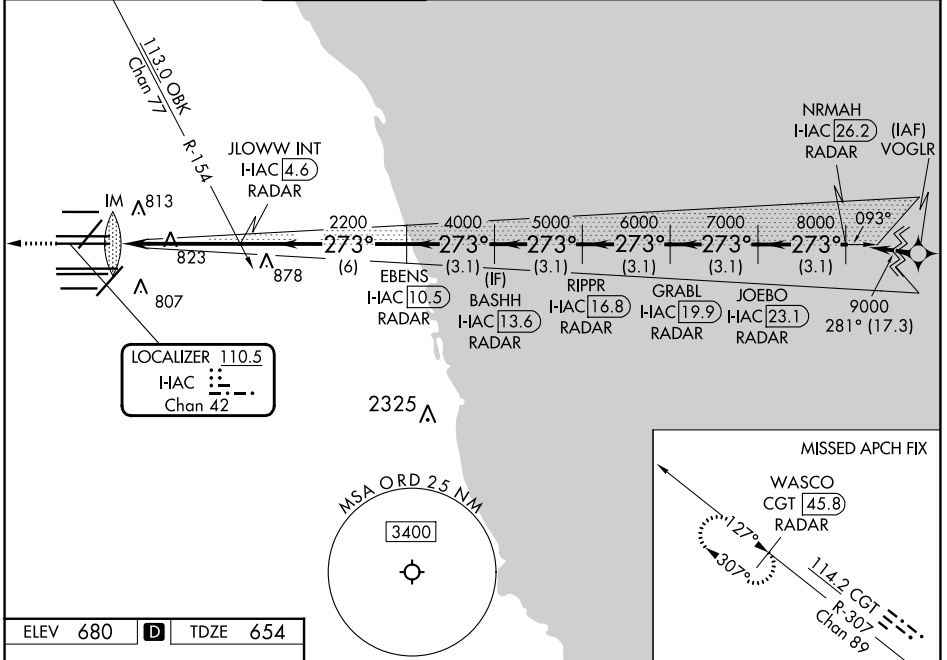
RNP APCH-GPS from VOGRL.

Aircraft not GPS equipped - RADAR required for procedure entry. DME or RADAR required.

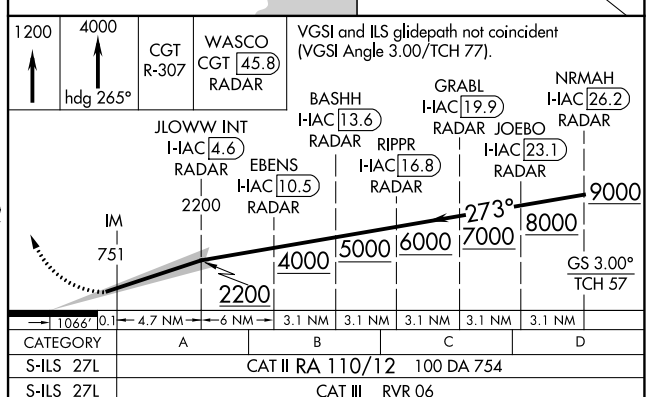
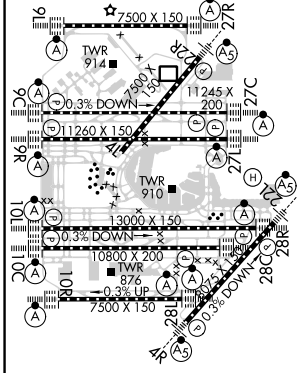
ALSF-2 MISSED APPROACH: Climb to 1200 then climb to 4000 on heading 265° and on CGT VORTAC R-307 to WASCO/CGT 45.8 DME/RADAR and hold.

Simultaneous approach authorized.

D-ATIS	CHICAGO APP CON	O'HARE TOWER	GND CON (TWR NORTH)	(TWR CENTER)	CLNC DEL	CPDLC
135.4	119.0 292.125	126.9 348.0	124.125 (TWR SOUTH)	121.75 (OBND)	121.6	
282.225			118.05 (ALL TWRS)	121.9 (IBND)		



ELEV 680	<b>D</b>	TDZE 654
----------	----------	----------



## CATEGORY II & III ILS - SPECIAL AIRCREW & AIRCRAFT CERTIFICATION REQUIRED

EC-3, 28 NOV 2024 to 26 DEC 2024

EC-3, 28 NOV 2024 to 26 DEC 2024