

LOC/DME I-TSL 111.1 Chan 48	APP CRS 273°	Rwy ldg TDZE Apt Elev	13000 651 680
--	------------------------	-----------------------------	--

ILS RWY 28R (CAT II & III)

CHICAGO O'HARE INTL (ORD)

From VOGIR: RNAV 1-GPS required.
Aircraft not GPS equipped - RADAR required for procedure entry.
DME or RADAR required.

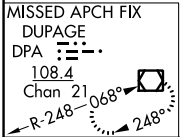
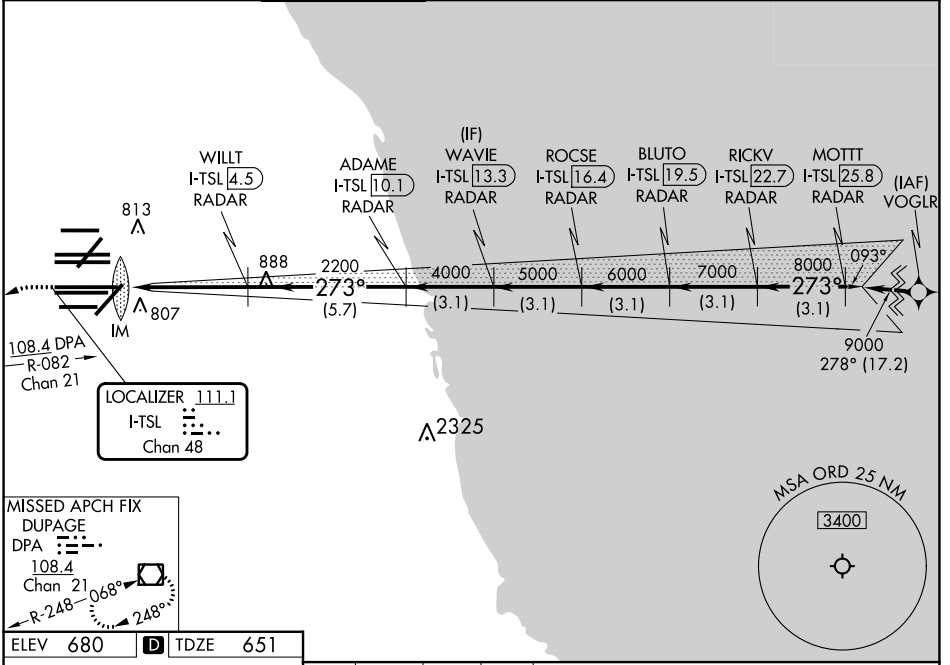
ALSF-2



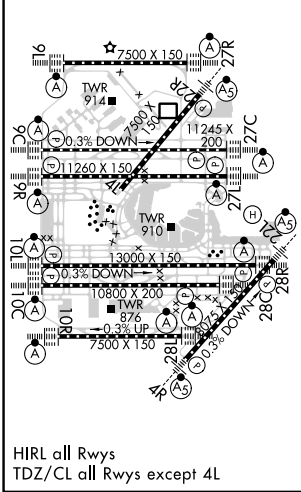
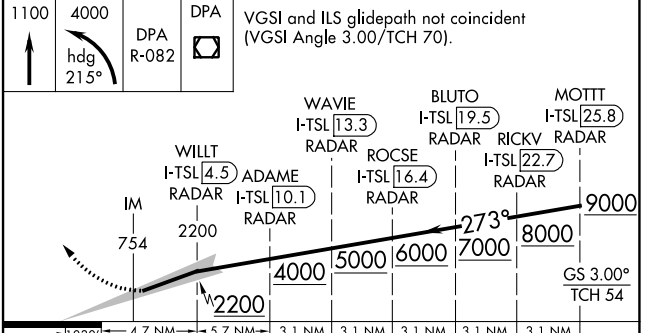
MISSED APPROACH: Climb to 1100 then climbing left turn to 4000 on heading 215° and DPA VOR/DME R-082 to DPA VOR/DME and hold.

Simultaneous approach authorized.

D-ATIS 135.4 282.225	CHICAGO APP CON 119.0 292.125	O'HARE TOWER 132.7 348.0	GND CON (TWR CENTER) 124.125 (TWR NORTH) 118.05 (TWR SOUTH) 226.675 (ALL TWRs)	121.75 (OBND) 121.9 (IBND)	CLNC DEL 121.6	CPDLC
--	---	------------------------------------	--	---	--------------------------	-------



ELEV 680	D	TDZE 651
----------	----------	----------



1100	4000	DPA	VGSI and ILS glidepath not coincident (VGSI Angle 3.00/TCH 70).
hdg 215°	R-082		
WAVIE I-TSL [13.3] RADAR	BLUTO I-TSL [19.5] RADAR	MOTT I-TSL [25.8] RADAR	
WILLT I-TSL [4.5] RADAR	ADAME I-TSL [10.1] RADAR	RICKV I-TSL [22.7] RADAR	
ROCSE I-TSL [16.4] RADAR			
IM	754	2200	9000
4000	5000	6000	7000
3.1 NM	3.1 NM	3.1 NM	3.1 NM
GS 3.00°	TCH 54		
CATEGORY A	CATEGORY B	CATEGORY C	CATEGORY D
S-ILS 28R	CAT II RA 97/12 100 DA 751		
S-ILS 28R	CAT III RVR 06		

CATEGORY II & III ILS - SPECIAL AIRCREW & AIRCRAFT CERTIFICATION REQUIRED

EC-3, 28 NOV 2024 to 26 DEC 2024

EC-3, 28 NOV 2024 to 26 DEC 2024