

|  |                        |  |
|--|------------------------|--|
| LOC/DME I-OYG<br><b>111.9</b><br>Chan 56 | APP CRS<br><b>093°</b> | Rwy Idg <b>11245</b><br>TDZE <b>673</b><br>Apt Elev <b>680</b> |
|--|------------------------|--|

# ILS RWY 9C (CAT II & III)

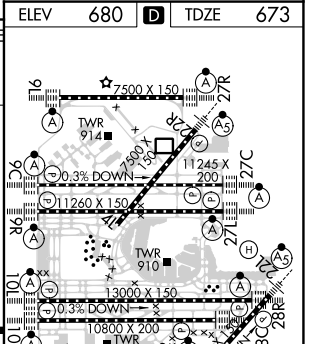
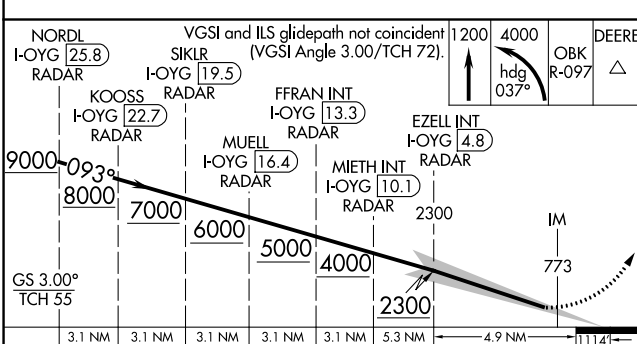
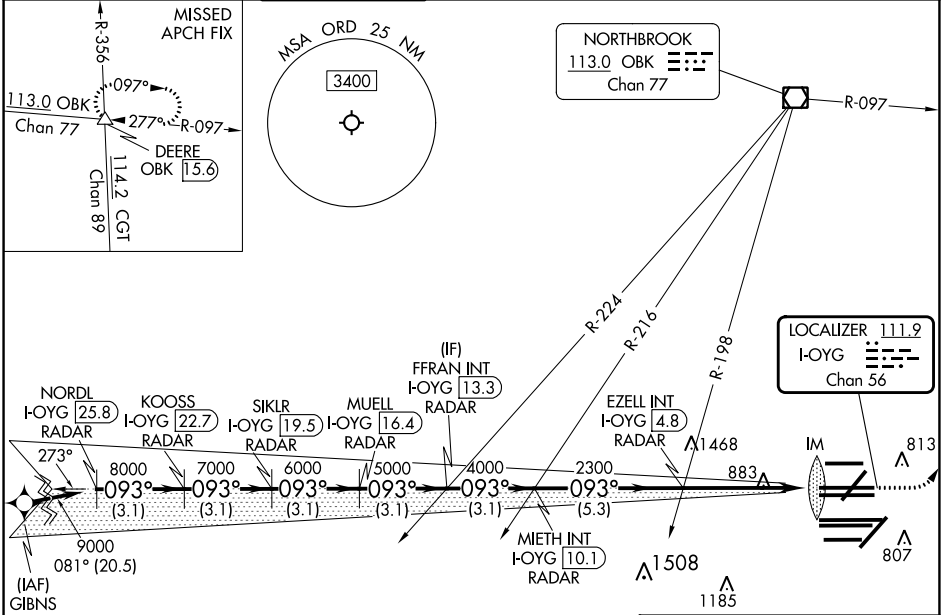
CHICAGO O'HARE INTL (ORD)

DME or RADAR required. From GIBNS: RNAV 1-GPS required. Aircraft not GPS equipped - RADAR required for procedure entry.

Simultaneous approach authorized. CAT II: RVR 1000 authorized with specific OPSPEC, MSPEC or LOA approval and use of Autoland or HUD to touchdown.

MISSED APPROACH: Climb to 1200 then climbing left turn to 4000 on heading 037° and OBK VOR/DME R-097 to DEERE INT/OBK 15.6 DME and hold.

|  |   |                                     |   |  |                          |       |
|--|---|-------------------------------------|---|--|--------------------------|-------|
| D-ATIS<br><b>135.4</b><br><b>282.225</b> | CHICAGO APP CON<br><b>119.0 292.125</b> | O'HARE TOWER<br><b>121.15 348.0</b> | GND CON (TWR NORTH)<br><b>124.125</b><br>(TWR SOUTH)<br><b>118.05</b><br>(ALL TWRs)<br><b>226.675</b> | (TWR CENTER) (OBND)<br><b>121.75</b><br>(IBND)<br><b>121.9</b> | CLNC DEL<br><b>121.6</b> | CPDLC |
|--|---|-------------------------------------|---|--|--------------------------|-------|



|          |                             |   |   |   |
|----------|-----------------------------|---|---|---|
| CATEGORY | A                           | B | C | D |
| S-ILS 9C | CAT II RA 100/12 100 DA 773 |   |   |   |
| S-ILS 9C | CAT III RVR 07              |   |   |   |

**CATEGORY II & III ILS - SPECIAL AIRCREW & AIRCRAFT CERTIFICATION REQUIRED**

HIRL all Rwys  
TDZ/CL all Rwys except 4L

EC-3, 28 NOV 2024 to 26 DEC 2024

EC-3, 28 NOV 2024 to 26 DEC 2024