

LOC/DME I-SXH 108.95 Chan 26(Y)	APP CRS 093°	Rwy Idg TDZE 669 Apt Elev 680
--	------------------------	---

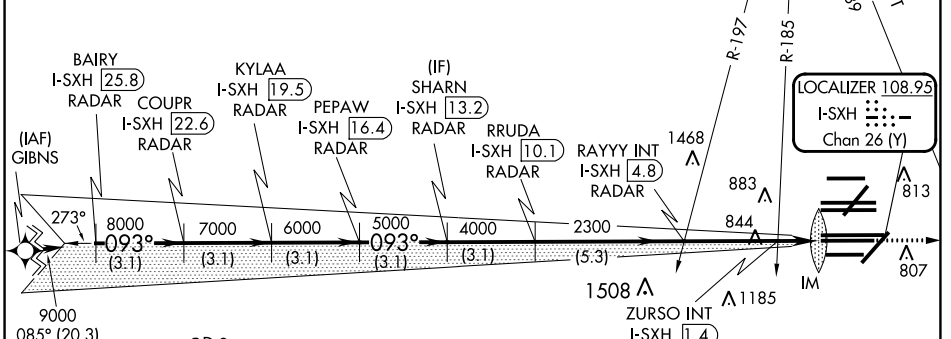
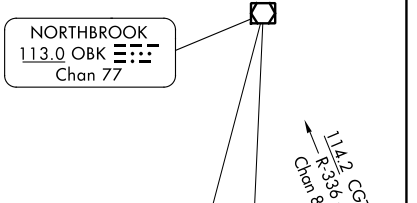
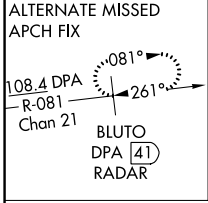
ILS or LOC RWY 10C

CHICAGO O'HARE INTL (ORD)

From GIBNS: RNAV-1 GPS required.
 RNAV 1-GPS or RADAR required for procedure entry. DME or RADAR required.
 Simultaneous approach authorized.

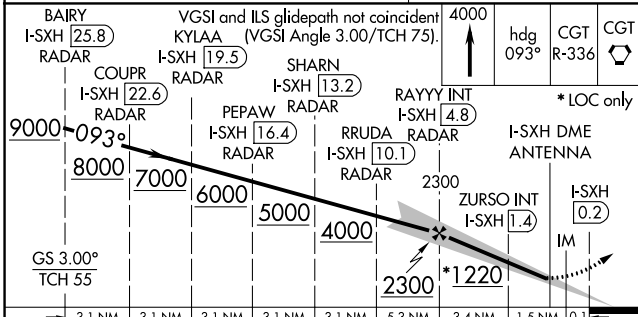
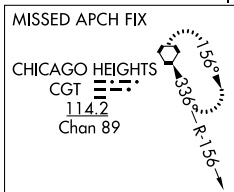
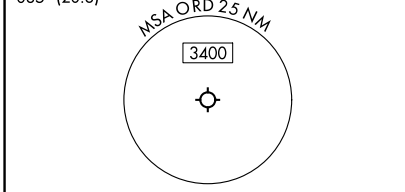
ALSf-2
 MISSED APPROACH: Climb to 4000 on heading 093° and CGT VORTAC R-336 to CGT VORTAC and hold.

D-ATIS 135.4 282.225	CHICAGO APP CON 119.0 292.125	O'HARE TOWER 120.75 348.0	GND CON (TWR CENTER) 124.125 (TWR NORTH) 118.05 (TWR SOUTH) 226.675 (ALL TWRs)	(TWR CENTER) 121.75 (OBND) 121.9 (IBND)	CLNC DEL 121.6	CPDLC
--	---	-------------------------------------	--	---	--------------------------	-------

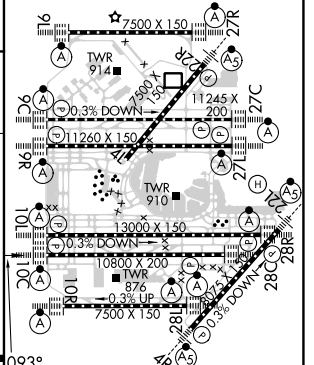


EC-3, 28 NOV 2024 to 26 DEC 2024

EC-3, 28 NOV 2024 to 26 DEC 2024



ELEV 680	TDZE 669
----------	----------



BAIRY I-SXH 25.8 RADAR	COUPR I-SXH 22.6 RADAR	KYLAA I-SXH 19.5 RADAR	SHARN I-SXH 13.2 RADAR	PEPAW I-SXH 16.4 RADAR	RRUDA I-SXH 10.1 RADAR	RAYY INT I-SXH 4.8 RADAR	ZURSO INT I-SXH 1.4	I-SXH DME ANTENNA																							
<table border="1"> <tr> <td>3.1 NM</td> <td>3.1 NM</td> <td>3.1 NM</td> <td>3.1 NM</td> <td>3.1 NM</td> <td>5.3 NM</td> <td>3.4 NM</td> <td>1.5 NM</td> <td>0.1 NM</td> </tr> </table>								3.1 NM	3.1 NM	3.1 NM	3.1 NM	3.1 NM	5.3 NM	3.4 NM	1.5 NM	0.1 NM															
3.1 NM	3.1 NM	3.1 NM	3.1 NM	3.1 NM	5.3 NM	3.4 NM	1.5 NM	0.1 NM																							
<table border="1"> <tr> <td>Category</td> <td>A</td> <td colspan="2">B</td> <td colspan="2">C</td> <td colspan="2">D</td> </tr> <tr> <td>S-ILS 10C</td> <td colspan="7">869/18 200 (200-1/2)</td> </tr> <tr> <td>S-LOC 10C</td> <td>1220/24</td> <td colspan="2">551 (600-1/2)</td> <td colspan="2">1220/60</td> <td colspan="2">551 (600-1/4)</td> </tr> </table>								Category	A	B		C		D		S-ILS 10C	869/18 200 (200-1/2)							S-LOC 10C	1220/24	551 (600-1/2)		1220/60		551 (600-1/4)	
Category	A	B		C		D																									
S-ILS 10C	869/18 200 (200-1/2)																														
S-LOC 10C	1220/24	551 (600-1/2)		1220/60		551 (600-1/4)																									
ZURSO FIX MINIMUMS (DUAL VOR RECEIVERS OR DME REQUIRED)																															
S-LOC 10C	1100/24	431 (500-1/2)		1100/40		431 (500-3/4)																									

HIREL all Rwy's TDZ/CL all Rwy's except 4L					
FAF to MAP 5 NM					
Knots	60	90	120	150	180
Min:Sec	5:00	3:20	2:30	2:00	1:40