

LOC/DME I-MED 111.1 Chan 48	APP CRS 093°	Rwy ldg 12246 TDZE 672 Apt Elev 680
---	------------------------	--

ILS or LOC RWY 10L

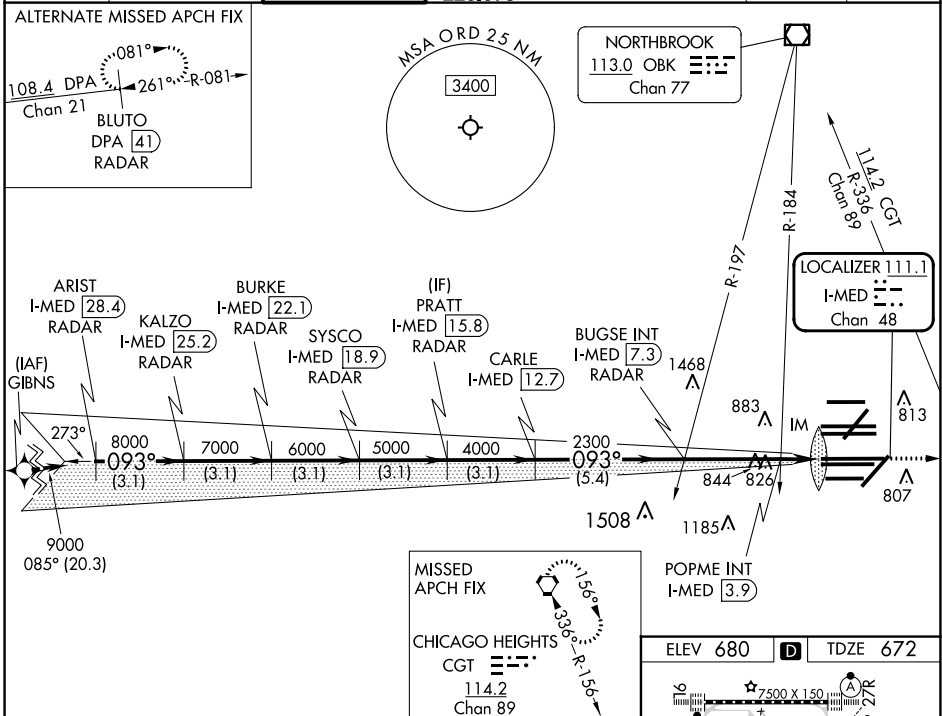
CHICAGO O'HARE INTL (ORD)

From GIBNS: RNAV-1 GPS required.
 RNAV 1-GPS or RADAR required for procedure entry. DME or RADAR required.
 Simultaneous approach authorized.

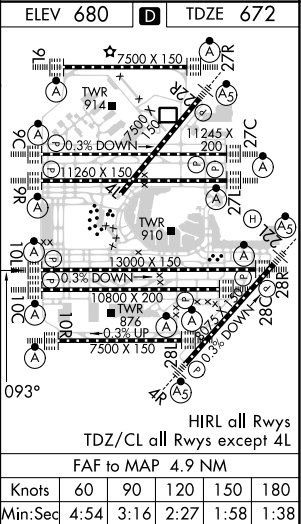


MISSED APPROACH: Climb to 4000 on heading 093° and CGT VORTAC R-336 to CGT VORTAC and hold.

D-ATIS 135.4 282.225	CHICAGO APP CON 119.0 292.125	O'HARE TOWER 132.7 348.0	GND CON (TWR CENTER) 124.125 (TWR NORTH) 118.05 (TWR SOUTH) 226.675 (ALL TWRS)	(TWR CENTER) 121.75 (OBND) 121.9 (IBND)	CLNC DEL 121.6	CPDLC
--	---	------------------------------------	--	---	--------------------------	-------



ARIST I-MED 28.4 RADAR	BURKE I-MED 22.1 RADAR	PRATT I-MED 15.8 RADAR	BUGSE INT I-MED 7.3	POPME INT I-MED 3.9	CGT R-336	CGT
KALZO I-MED 25.2 RADAR	SYSCO I-MED 18.9 RADAR	CARLE I-MED 12.7	2300	I-MED 2.4	hdg 093°	CGT
9000	8000	7000	6000	5000	4000	2300
3.1 NM	3.1 NM	3.1 NM	3.1 NM	3.1 NM	5.4 NM	3.4 NM
*LOC only.						
HILTS all Rwy's TDZ/CL all Rwy's except 4L						
FAF to MAP 4.9 NM						
Knots 60 90 120 150 180						
Min:Sec 4:54 3:16 2:27 1:58 1:38						



EC-3, 28 NOV 2024 to 26 DEC 2024

EC-3, 28 NOV 2024 to 26 DEC 2024