

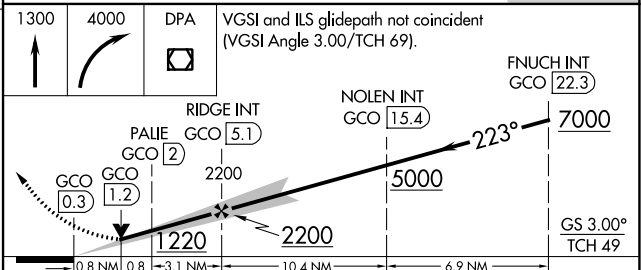
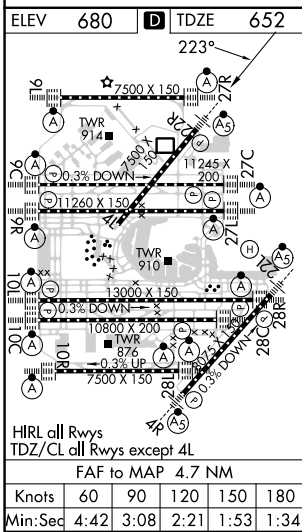
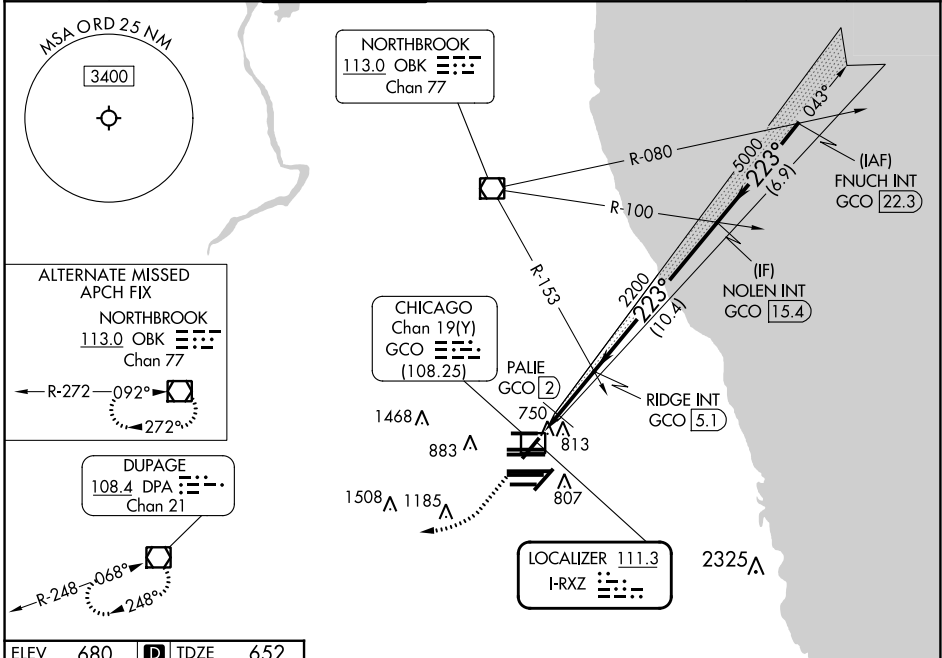
LOC I-RXZ 111.3	APP CRS 223°	Rwy ldg TDZE Apt Elev	7300 652 680
---------------------------	------------------------	-----------------------------	---

ILS or LOC RWY 22R

CHICAGO O'HARE INTL (ORD)

RADAR required for procedure entry.		MALSR	MISSED APPROACH: Climb to 1300 then climbing right turn to 4000 direct DPA VOR/DME and hold.	
Simultaneous approach authorized. DME from GCO DME.				

D-ATIS 135.4 282.225	CHICAGO APP CON 119.0 292.125	O'HARE TOWER 126.9 348.0	124.125 GND CON 118.05 (TWR NORTH) 226.675 (TWR SOUTH) 226.675 (ALL TWRs)	(TWR CENTER) 121.75 (OBND) 121.9 (IBND)	CLNC DEL 121.6	CPDLC
--	--	---	--	---	--------------------------	-------



CATEGORY	A		B		C		D	
	S-ILS 22R	852/18		200 (200-½)				
S-LOC 22R	1220/24	568 (600-½)	1220-1¼	568 (600-1¼)				
C CIRCLING	1220-1	540 (600-1)	1220-1½	540 (600-1½)	1460-2½			
PALIE FIX MINIMUMS								
S-LOC 22R	980/24	328 (300-½)	980/26	328 (300-½)				
C CIRCLING	1220-1	540 (600-1)	1220-1½	540 (600-1½)	1460-2½			

EC-3, 28 NOV 2024 to 26 DEC 2024

EC-3, 28 NOV 2024 to 26 DEC 2024