

LOC/DME I-UYJ 111.9 Chan 56	APP CRS 273°	Rwy ldg 11245 TDZE 653 Apt Elev 680
--	------------------------	--

ILS or LOC RWY 27C

CHICAGO O'HARE INTL (ORD)

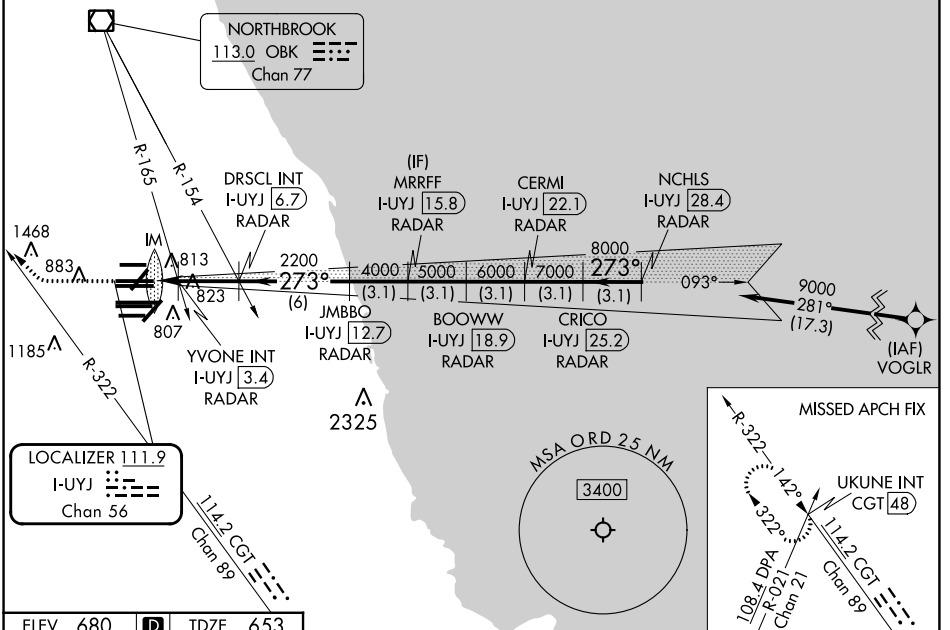
From VOGLR: RNAV 1-GPS required. Aircraft not GPS equipped - RADAR required for procedure entry. DME or RADAR required.

ALSF-2

MISSED APPROACH: Climb to 1100 then climbing right turn to 4000 on heading 290° and CGT R-322 to UKUNE INT/ CGT 48 DME and hold.

Simultaneous approach authorized. For inop ALS, increase S-LOC 27C Cat C/D visibility to 1½ SM.

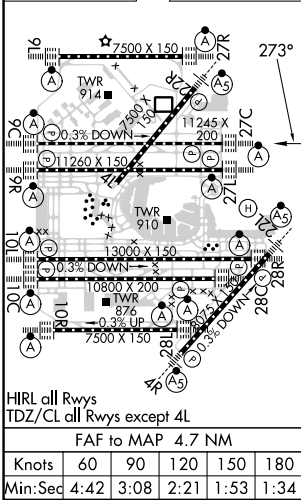
D-ATIS 135.4 282.225	CHICAGO APP CON 119.0 292.125	O'HARE TOWER 121.15 348.0	GND CON (TWR NORTH) 124.125 (TWR SOUTH) 118.05 (ALL TWRS) 226.675	(TWR CENTER) (OBND) 121.75 (IBND) 121.9	CLNC DEL 121.6	CPDLC
--	---	-------------------------------------	---	--	--------------------------	-------



EC-3, 28 NOV 2024 to 26 DEC 2024

EC-3, 28 NOV 2024 to 26 DEC 2024

ELEV 680	D	TDZE 653
----------	---	----------



1100	4000	CGT R-322	UKUNE INT	VGSI and ILS glidepath not coincident (VGSI Angle 3.00/TCH 75).	NCHLS I-UYJ 28.4 RADAR
		DRISCL INT I-UYJ 6.7 RADAR	MRRFF I-UYJ 15.8 RADAR	CERMI I-UYJ 22.1 RADAR	CRICO I-UYJ 25.2 RADAR
		YVONE INT I-UYJ 3.4 RADAR	JMBBO I-UYJ 12.7 RADAR	BOOWW I-UYJ 18.9 RADAR	GS 3.00° TCH 56
CATEGORY		A	B	C	D
S-ILS 27C		853/18 200 (200-½)			
S-LOC 27C		1160/24	507 (500-½)	1160/55	507 (500-1)
YVONE FIX MINIMUMS (DUAL VOR RECEIVERS or DME REQUIRED)					
S-LOC 27C		1080/24	427 (400-½)	1080/40	427 (400-¾)