

ILS PRM RWY 28C (SA CAT I)

(CLOSE PARALLEL)

CHICAGO O'HARE INTL (ORD)

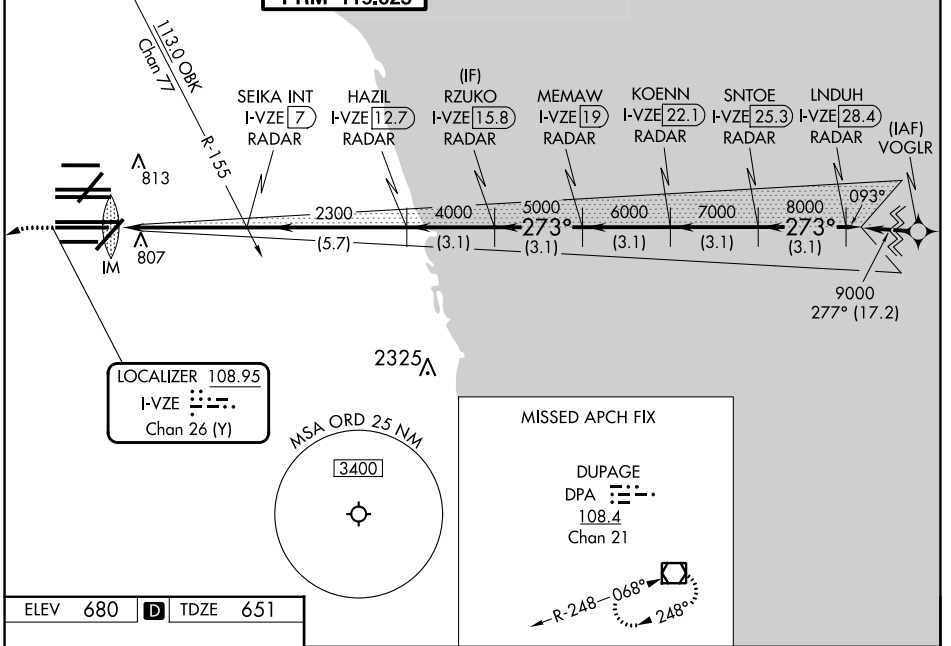
LOC/DME I-VZE 108.95 Chan 26 (Y)	APP CRS 273°	Rwy ldg 10800 TDZE 651 Apt Elev 680
--	------------------------	--

Aircraft not GPS equipped - RADAR required for procedure entry. DME or RADAR required. From VOGLR: RNAV 1-GPS required.

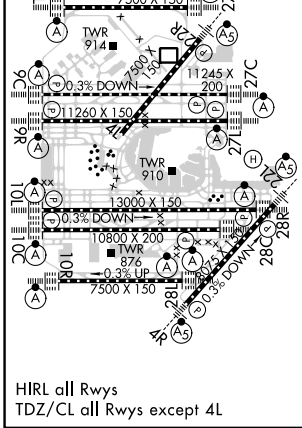
Simultaneous approach authorized. Use of FD or AP required during simultaneous operations. Dual VHF comm required. See additional requirements on AAUP. Requires specific OPSPEC, MSPEC, or LOA approval and use of HUD to DH.

ALSF-2 	MISSED APPROACH: Climb to 1100 then climbing left turn to 4000 on heading 215° and DPA VOR/DME R-082 to DPA VOR/DME and hold.
------------	--

D-ATIS 135.4 282.225	CHICAGO APP CON 119.0 292.125	O'HARE TOWER 120.75 348.0 PRM 119.625	GND CON (TWR NORTH) 124.125 (TWR SOUTH) 118.05 (ALL TWRs) 226.675	(TWR CENTER) 121.75 (OBND) 121.9 (IBND)	CLNC DEL 121.6	CPDLC
--	---	---	---	---	--------------------------	-------



ELEV 680	D	TDZE 651
-----------------	----------	-----------------



1100	4000	DPA	DPA	VGSI and ILS glidepath not coincident (VGSI Angle 3.00/TCH 80)
↑	hdg 215°	R-082		
				KOENN I-VZE 22.1 RZUKO I-VZE 15.8 SEIKA INT I-VZE 7 HAZIL I-VZE 12.7 MEMAW I-VZE 19 SNTOE I-VZE 25.3 LINDUH I-VZE 28.4
				2300 4000 5000 6000 7000 8000 9000
				GS 3.00° TCH 55
				1044' -5 NM -5.7 NM 3.1 NM 3.1 NM 3.1 NM 3.1 NM 3.1 NM
CATEGORY	A	B	C	D
S-ILS 28C		RA 155/14	150 DA 801	

SA CATEGORY I ILS - SPECIAL AIRCREW & AIRCRAFT CERTIFICATION REQUIRED

ILS PRM RWY 28C (SA CAT I) (CLOSE PARALLEL)

EC-3, 28 NOV 2024 to 26 DEC 2024

EC-3, 28 NOV 2024 to 26 DEC 2024