

30NOV23

O'HARE EIGHT DEPARTURE

CHICAGO, ILLINOIS  
CHICAGO O'HARE INTL (ORD)

**TOP ALTITUDE:  
5000**

RADAR required.

CHICAGO DEP CON  
WEST  
126.625 327.075

IOWA CITY  
116.2 IOW  
Chan 109

**SPECIAL INSTRUCTIONS:** For appropriate departure control frequency, see graphic. Use frequency depicted within the sector where first navaid/fix for your route is located (sectors indicated by dashed lines; frequencies in dashed box within).

BADGER  
116.4 BAE  
Chan 111

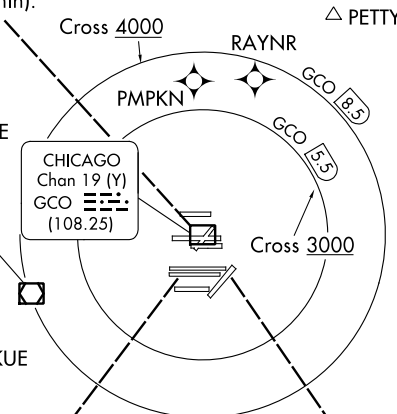
**NOTE:** All turbo-jet departures in all directions, maintain 250K until advised by ATC.

CLNC DEL  
121.6  
CPDLC

CHICAGO DEP CON  
EAST/NORTH  
125.0 337.4

KEELER  
116.6 ELX  
Chan 113

DUPAGE  
108.4 DPA  
Chan 21



CHICAGO  
Chan 19 (Y)  
GCO  
(108.25)

EBAKE  
DUFEE  
MOBLE

**TAKEOFF MINIMUMS**

- Rwy 22R: NA - ATC.
- Rwys 4L/R, 9L/C/R, 10L/C/R, 22L, 28C/R: Standard.
- Rwy 27L/C: Standard with minimum climb of 220' per NM to 1800.
- Rwy 27R: Standard with minimum climb of 220' per NM to 1700.
- Rwy 28L: Standard with minimum climb of 210' per NM to 900, or alternatively, with standard takeoff minimums and a normal 200' per NM climb gradient, takeoff must occur no later than 1300' prior to DER.

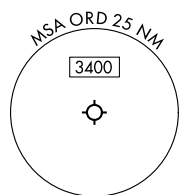
BACEN  
DENNT  
CMSKY  
EARND  
ACITO

CHICAGO DEP CON  
SOUTH  
126.625 327.075

ROBERTS  
116.8 RBS  
Chan 115

PEOTONE  
113.2 EON  
Chan 79

GIPPER  
115.4 GU  
Chan 101



NOTE: Chart not to scale.

(CONTINUED ON FOLLOWING PAGE)

240225

AL-166 (FAA)

CHICAGO O'HARE INTL (ORD)  
CHICAGO, ILLINOIS

# O'HARE EIGHT DEPARTURE



## DEPARTURE ROUTE DESCRIPTION

ALL AIRCRAFT: Expect RADAR vectors to first enroute navaid/fix.  
Expect clearance to requested altitude/flight level ten minutes after departure.

ALL AIRCRAFT: Cross 5.5 DME arc of GCO DME at or above 3000, cross  
8.5 DME arc of GCO DME at or above 4000, maintain 5000 or assigned altitude.  
If unable to comply advise ATC as soon as possible prior to departure.

EC-3, 28 NOV 2024 to 26 DEC 2024

EC-3, 28 NOV 2024 to 26 DEC 2024