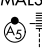


WAAS CH <b>90504</b> <b>W22A</b>	APP CRS <b>223°</b>	Rwy Idg <b>7300</b> TDZE <b>652</b> Apt Elev <b>680</b>
--	------------------------	--

# RNAV (GPS) RWY 22R

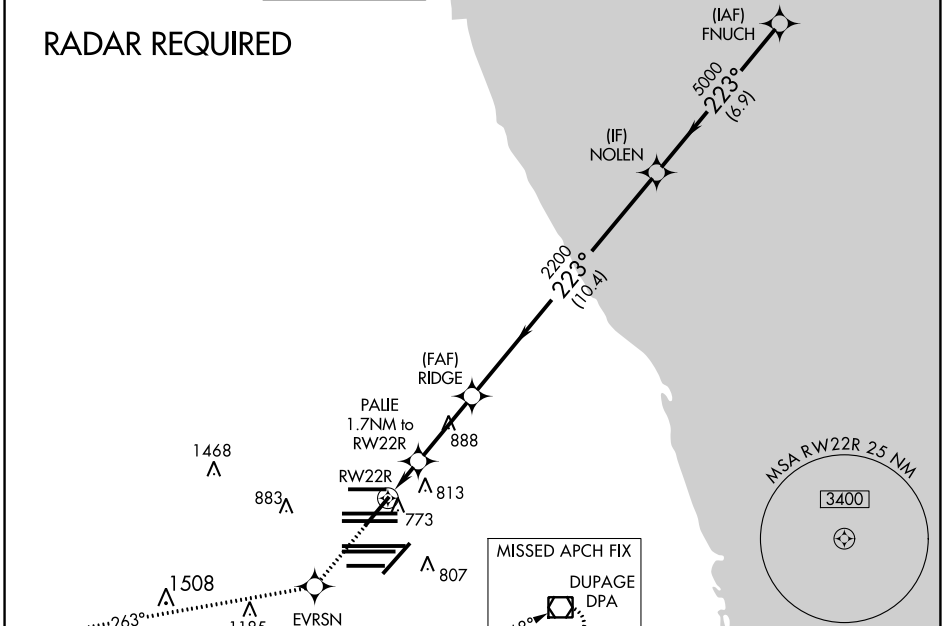
CHICAGO O'HARE INTL (ORD)

**⚠** For uncompensated Baro-VNAV systems, LNAV/VNAV NA below -22°C (-7°F) or above 39°C (102°F). Simultaneous approach authorized with Rwy 22L. DME/DME RNP-0.3 NA. LNAV procedure NA during simultaneous operations. Use of FD or AP providing RNAV track guidance required during simultaneous operations.

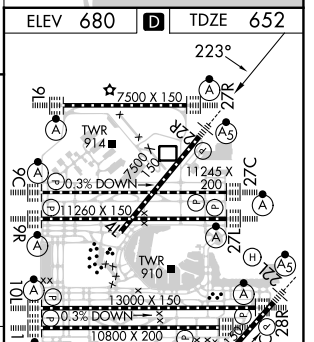
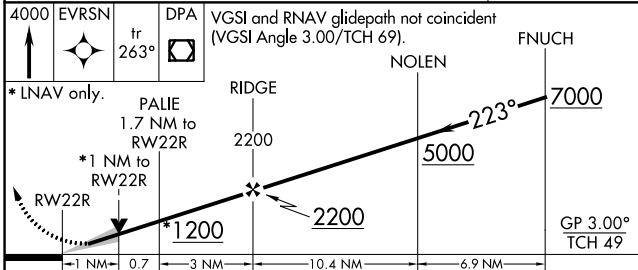
**MALSR**  


**MISSED APPROACH:** Climb to 4000 direct EVRSN and on track 263° to DPA VOR/DME and hold.

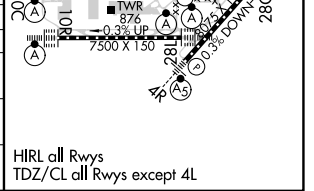
D-ATIS <b>135.4</b> <b>282.225</b>	CHICAGO APP CON <b>119.0 292.125</b>	O'HARE TOWER <b>126.9 348.0</b>	GND CON (TWR CENTER) <b>121.75</b> (TWR NORTH) <b>118.05</b> (TWR SOUTH) <b>126.675</b> (ALL TWRS)	(TWR CENTER) (OBND) <b>121.9</b> (IBND)	CLNC DEL <b>121.6</b>	CPDLC
--	--	------------------------------------	--	---	--------------------------	-------



ELEV 680	<b>D</b>	TDZE 652
----------	----------	----------



CATEGORY	A	B	C	D
LPV DA		852/18	200 (200-½)	
LNAV/VNAV DA		972/32	320 (300-¾)	
LNAV MDA	1040/24	388 (400-½)	1040/35	388 (400-¾)
<b>C</b> CIRCLING	1220-1	540 (600-1)	1220-1½	1460-2½
			540 (600-1½)	780 (800-2½)



EC-3, 28 NOV 2024 to 26 DEC 2024

EC-3, 28 NOV 2024 to 26 DEC 2024