

WAAS CH <b>70643</b> <b>W27D</b>	APP CRS <b>273°</b>	Rwy Idg <b>11245</b> TDZE <b>653</b> Apt Elev <b>680</b>
--	------------------------	--

# RNAV (GPS) RWY 27C

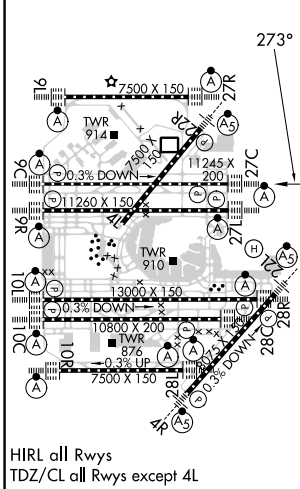
CHICAGO O'HARE INTL (ORD)

RNP APCH. Simultaneous approach authorized. LNAV procedure NA during simultaneous operations. Use of FD or AP required during simultaneous operations. For uncompensated Baro-VNAV systems, LNAV/VNAV NA below -19°C or above 54°C. For inop ALS, increase LNAV Cat C/D visibility to RVR 6000.	ALS F-2 	MISSED APPROACH: Climb to 1100 then climbing right turn to 4000 direct UKUNE and hold.
--	-------------	---

D-ATIS <b>135.4</b> <b>282.225</b>	CHICAGO APP CON <b>119.0 292.125</b>	O'HARE TOWER <b>121.15 348.0</b>	GND CON (TWR NORTH) <b>124.125</b> (TWR SOUTH) <b>118.05</b> <b>226.675</b> (ALL TWRs)	(TWR CENTER) <b>121.75</b> (OBND) <b>121.9</b> (IBND)	CLNC DEL <b>121.6</b>	CPDLC
--	---	-------------------------------------	---	--	--------------------------	-------



ELEV 680	<b>D</b>	TDZE 653
----------	----------	----------



1100	4000	UKUNE	VGSi and RNAV glidepath not coincident (VGSi Angle 3.00°/TCH 75).			NCHLS			
*LNAV only.		YVONE 1.4 NM to RWY 27C	DRSCL	JMBBO	MRRFF	BOOWW	CERMI	CRICO	9000
		2200	2200	4000	5000	6000	7000	8000	
		1160*	2200						
	1.4	3.3	3.1	3.1	3.1	3.1	3.1		
CATEGORY	A		B		C		D		
LPV DA			853/18		200 (200-½)				
LNAV/VNAV DA			1086/40		433 (500-¾)				
LNAV MDA	1060/24		407 (400-½)		1060/40		407 (400-¾)		