

WAAS CH 42634 W28B	APP CRS 273°	Rwy Idg 10800 TDZE 651 Apt Elev 680
--	------------------------	--

RNAV (GPS) RWY 28C

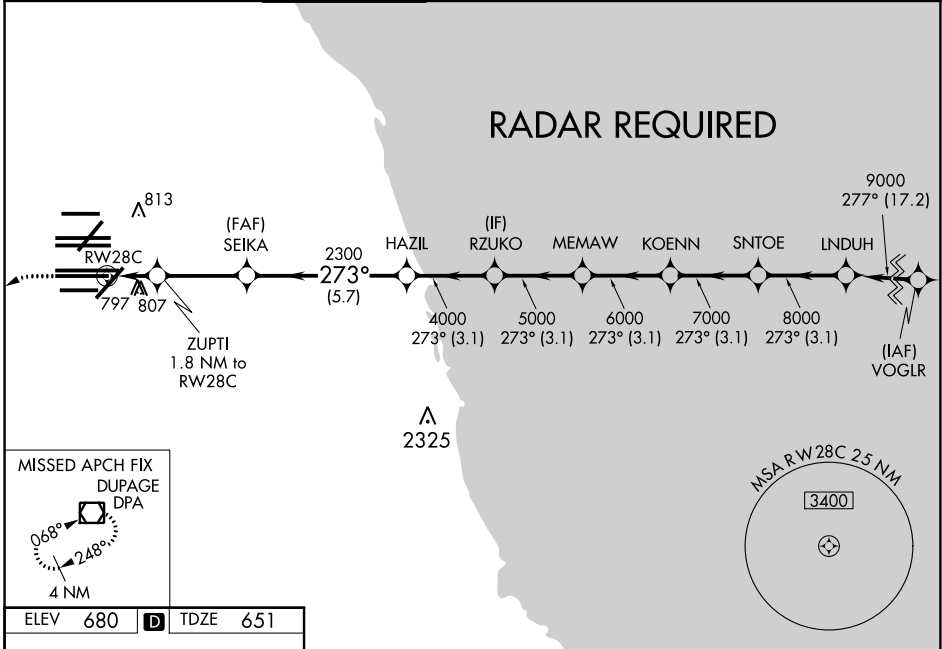
CHICAGO O'HARE INTL (ORD)

▼ DME/DME RNP-0.3 NA. Simultaneous approach authorized. For uncompensated Baro-VNAV systems, LNAV/VNAV NA below -19°C (-2°F) or above 54°C (130°F). LNAV procedure NA during simultaneous operations. Use of FD or AP providing RNAV track guidance required during simultaneous operations. For inop ALSF, increase LNAV Cat C and D visibility to RVR 6000.



MISSED APPROACH:
Climb to 1100 then
climbing left turn to
4000 direct DPA
VOR/DME and hold.

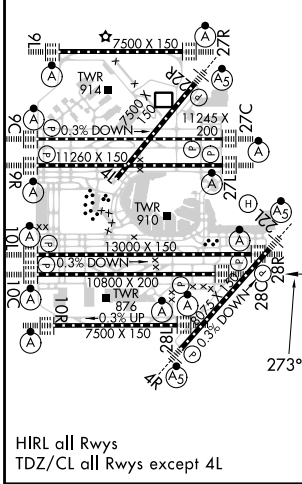
D-ATIS 135.4 282.225	CHICAGO APP CON 119.0 292.125	O'HARE TOWER 120.75 348.0	124.125 GND CON 118.05 (TWR NORTH) 226.675 (TWR SOUTH) (ALL TWRs)	(TWR CENTER) 121.75 (OBND) 121.9 (IBND)	CLNC DEL 121.6	CPDLC
--	--	-------------------------------------	---	---	--------------------------	-------



EC-3, 28 NOV 2024 to 26 DEC 2024

EC-3, 28 NOV 2024 to 26 DEC 2024

ELEV 680	D	TDZE 651
-----------------	----------	-----------------



1100	4000	DPA	VGSi and RNAV glidepath not coincident (VGSi Angle 3.00/TCH 80).			
*LNAV only.						
ZUPTI 1.8 NM to RW28C	SEIKA 2300	HAZIL	RZUKO	MEMAW	KOENN	SNTOE LNDUH 273° 9000
*1 NM to RW28C	*1260	4000	5000	6000	7000	8000
GP 3.00° TCH 55						
1 NM	0.8	3.2 NM	5.7 NM	3.1 NM	3.1 NM	3.1 NM
CATEGORY	A	B	C	D		
LPV DA		851/18	200 (200-½)			
LNAV/VNAV DA		1094/50	443 (500-1)			
LNAV MDA	1060/24	409 (400-½)	1060/40	409 (400-¾)		