

WAAS CH 58143 W09D	APP CRS 093°	Rwy Idg TDZE Apt Elev	11245 673 680
--	------------------------	-----------------------------	--

RNAV (GPS) RWY 9C

CHICAGO O'HARE INTL (O.R.D)

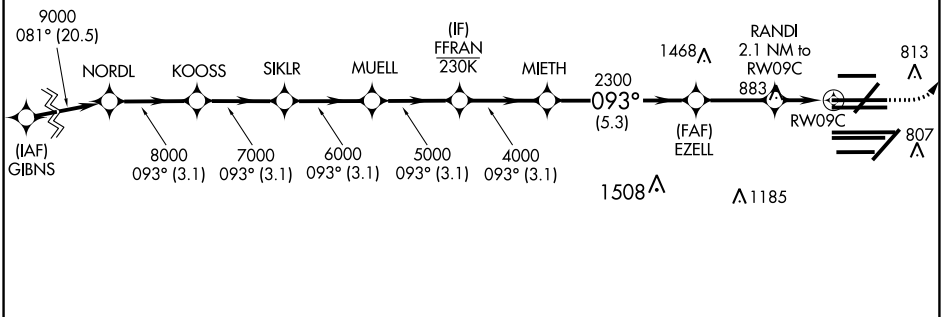
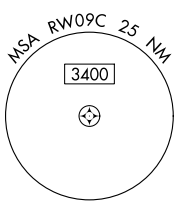
RNP APCH.

Simultaneous approach authorized. LNAV procedure NA during simultaneous operations. Use of FD or AP required during simultaneous operations. For uncompensated Baro-VNAV systems, LNAV/VNAV NA below -19°C or above 54°C. For inop ALS, increase MNAV/VNAV all cats visibility to RVR 4500 and LNAV Cat C/D to 1% SM.

ALSF-2

MISSED APPROACH: Climb to 1200 then climbing left turn to 4000 direct DEERE and hold.

D-ATIS 135.4 282.225	CHICAGO APP CON 119.0 292.125	O'HARE TOWER 121.15 348.0	GND CON (TWR NORTH) 124.125 (TWR SOUTH) 118.05 (ALL TWRs) 226.675	(TWR CENTER) 121.75 (OBND) 121.9 (IBND)	CLNC DEL 121.6	CPDLC
--	---	-------------------------------------	--	---	--------------------------	-------



EC-3, 28 NOV 2024 to 26 DEC 2024

EC-3, 28 NOV 2024 to 26 DEC 2024

VGSI and RNAV glidepath not coincident (VGSI Angle 3.00/TCH 72).

	9000	8000	7000	6000	5000	4000	2300	1400	
	093°								
	GP 3.00° TCH 55								
	-3.1 NM	3.1 NM	3.1 NM	3.1 NM	3.1 NM	5.3 NM	2.8 NM	0.9 - 1.2	
CATEGORY	A		B		C		D		
LPV DA			873/18		200 (200-½)				
LNAV/VNAV DA			976/24		303 (300-½)				
LNAV MDA	1140/24		467 (500-½)		1140/50		467 (500-1)		

