

# RNAV (GPS) PRM Y RWY 10R

(CLOSE PARALLEL)

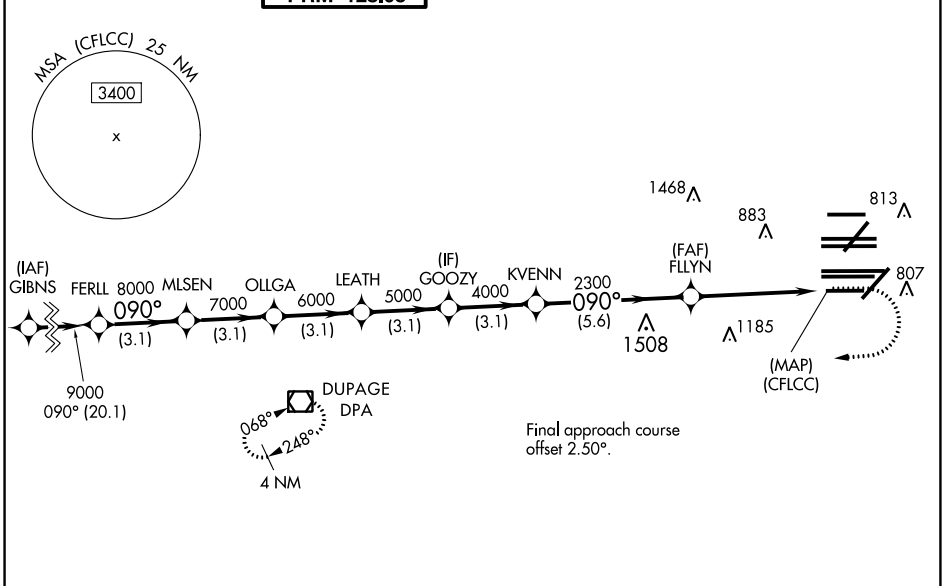
CHICAGO O'HARE INTL (ORD)

WAAS CH <b>77937</b> <b>W10D</b>	APP CRS <b>090°</b>	Rwy Idg TDZE Apt Elev	<b>7500</b> <b>680</b> <b>680</b>
--	------------------------	-----------------------------	---

RNP APCH.  
 Simultaneous approach authorized. Dual VHF comm required. See additional requirements on AAUP. For uncompensated Baro-VNAV systems, LNAV/VNAV NA below -19°C or above 54°C. Use of FD or AP providing RNAV track guidance required during simultaneous operations. For inop ALS, increase LNAV/VNAV all Cats visibility to 1 3/8 SM.

ALS-2  
 MISSED APPROACH: Climb to 1200 then climbing right turn to 4000 direct DPA VOR/DME and hold.

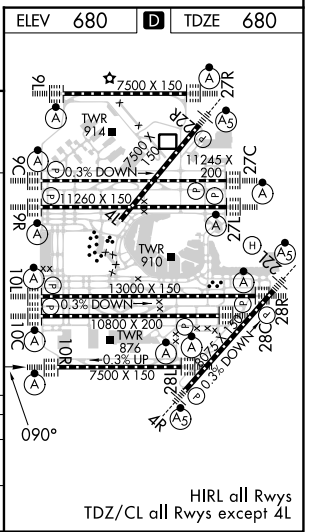
D-ATIS <b>135.4</b> <b>282.225</b>	CHICAGO APP CON <b>119.0 292.125</b>	O'HARE TOWER <b>133.0 348.0</b> <b>PRM 128.05</b>	GND CON (TWR CENTER) <b>124.125</b> (TWR NORTH) <b>118.05</b> (TWR SOUTH) <b>226.675</b> (ALL TWRs)	<b>121.75</b> (OBND) <b>121.9</b> (IBND)	CLNC DEL <b>121.6</b>	CPDLC
--	---	---	--	---	--------------------------	-------



EC-3, 28 NOV 2024 to 26 DEC 2024

EC-3, 28 NOV 2024 to 26 DEC 2024

	ELEV 680	TDZE 680	
	1200	4000	DPA
FERLL	9000	090°	
MLSN	8000		
OLLGA	7000		
LEATH	6000		
GOOZY	5000		
KVENN	4000		
FFLYN	2300	(CFLCC)	
	GP 3.00		
	TCH 55		
	3.1 NM	3.1 NM	3.1 NM
	3.1 NM	3.1 NM	5.6 NM
			4.9 NM
CATEGORY	A	B	C
LPV DA	930/24		250 (300-1/2)
LNAV/VNAV DA	1157/50		477 (500-1)



# RNAV (GPS) PRM Y RWY 10R (CLOSE PARALLEL)