

CHICAGO, ILLINOIS

AL-166 (FAA) **RNAV (GPS) PRM Y RWY 28L**

(CLOSE PARALLEL)

CHICAGO O'HARE INTL (ORD)

WAAS CH 93839 W28E	APP CRS 275°	Rwy Idg TDZE Apt Elev	7500 667 680
--	------------------------	-----------------------------	---

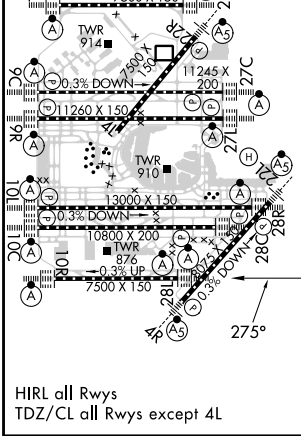
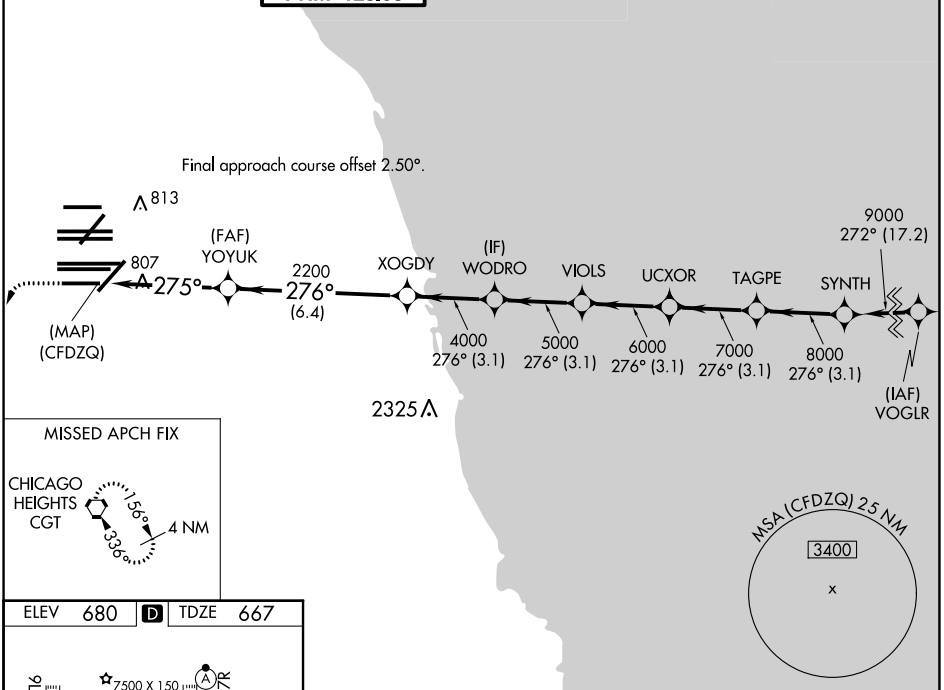
RNP APCH. RADAR required.

▼ For uncompensated Baro-VNAV systems, LNAV/VNAV NA below -19°C or above 54°C. Simultaneous approach authorized. Use of FD or AP required during simultaneous operations. Dual VHF comm required. See additional requirements on AAUP.

ALSIF-2

MISSED APPROACH: Climb to 1200 then climbing left turn to 4000 direct CGT VORTAC and hold.

D-ATIS 135.4 282.225	CHICAGO APP CON 119.0 292.125	O'HARE TOWER 133.0 348.0 PRM 128.05	GND CON (TWR NORTH) 124.125 (TWR SOUTH) 118.05 (ALL TWRS) 226.675	(TWR CENTER) (OBND) 121.75 (IBND) 121.9	CLNC DEL 121.6	CPDLC
--	---	---	--	---	--------------------------	-------



ELEV 680	D	TDZE 667				
1200	4000	CGT				
YOYUK	XOGDY	WODRO	VIOLS	UCXOR	TAGPE	SYNTH
2200	4000	5000	6000	7000	8000	9000
275°	276° (3.1)	276° (3.1)	276° (3.1)	276° (3.1)	276° (3.1)	276° (3.1)
4.7 NM	6.4 NM	3.1 NM	3.1 NM	3.1 NM	3.1 NM	3.1 NM
GP 3.00°						TCH 55
CATEGORY	A	B	C	D		
LPV DA	917/24		250 (300-½)			
LNAV/VNAV DA	1090/40		423 (500-¾)			

EC-3, 28 NOV 2024 to 26 DEC 2024

EC-3, 28 NOV 2024 to 26 DEC 2024

CHICAGO, ILLINOIS

41°59'N-87°54'W

CHICAGO O'HARE INTL (ORD)

Orig-A 13SEP18

RNAV (GPS) PRM Y RWY 28L (CLOSE PARALLEL)