

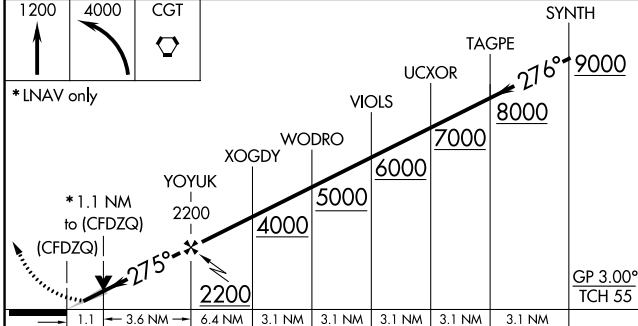
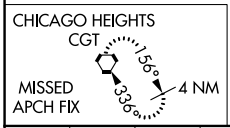
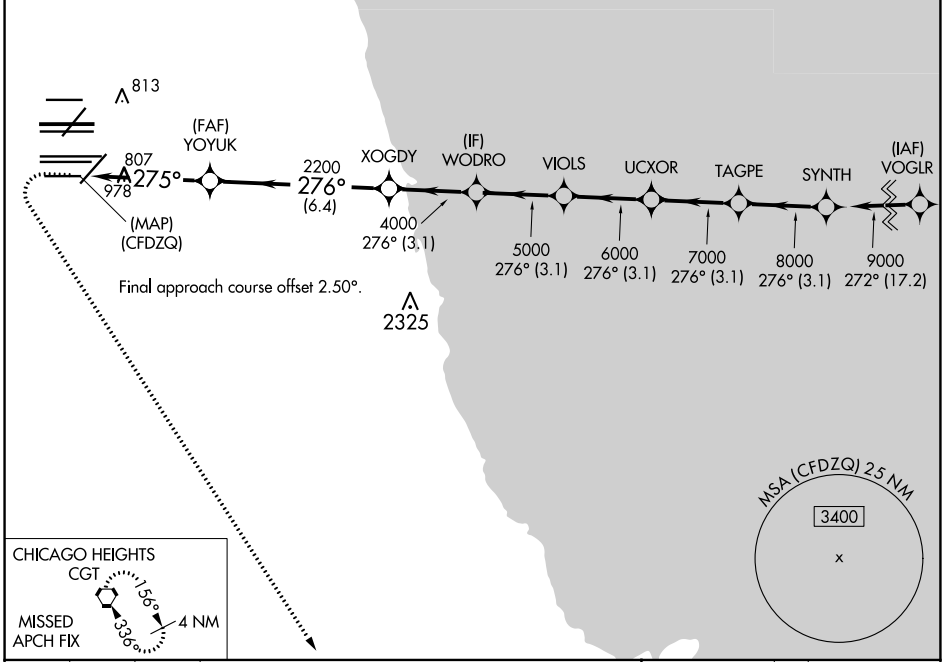
WAAAS CH 93839 W28E	APP CRS 275°	Rwy Idg TDZE 667 Apt Elev 680
---	------------------------	---

RNAV (GPS) Y RWY 28L

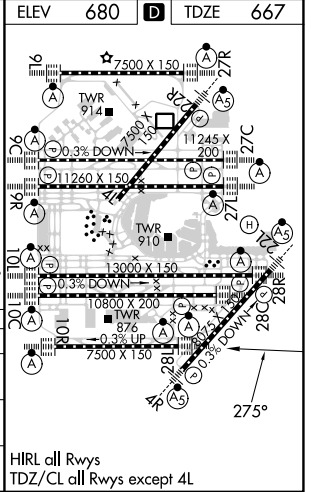
CHICAGO O'HARE INTL (ORD)

RNP APCH	<p>Simultaneous approach authorized. LNAV procedure NA during simultaneous operations. For uncompensated Baro-VNAV systems, LNAV/VNAV NA below -19°C or above 54°C. Use of FD or AP required during simultaneous operations.</p>	ALSF-2	MISSED APPROACH: Climb to 1200 then climbing left turn to 4000 direct CGT VORTAC and hold.
----------	--	--------	--

D-ATIS 135.4 282.225	CHICAGO APP CON 119.0 292.125	O'HARE TOWER 133.0 348.0	GND CON (TWR NORTH) 124.125 (TWR SOUTH) 118.05 226.675 (ALL TWRs)	(TWR CENTER) 121.75 (OBND) 121.9 (IBND)	CLNC DEL 121.6	CPDLC
--	---	------------------------------------	---	--	--------------------------	-------



CATEGORY	A	B	C	D
LPV DA	917/24		250 (300-1/2)	
LNAV/VNAV DA	1090/40		423 (500-3/4)	
LNAV MDA	1060/24	393 (400-1/2)	1060/35	393 (400-5/8)



EC-3, 28 NOV 2024 to 26 DEC 2024

EC-3, 28 NOV 2024 to 26 DEC 2024