

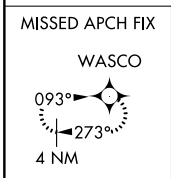
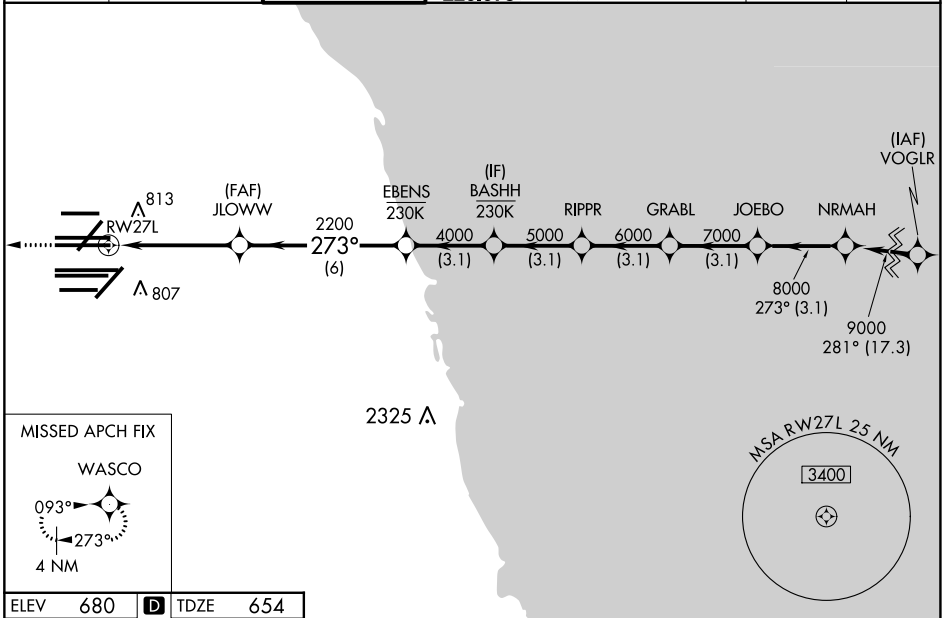
WAAS CH 77804 W27A	APP CRS 273°	Rwy Idg 11260 TDZE 654 Apt Elev 680
--	------------------------	--

RNAV (GPS) Z RWY 27L

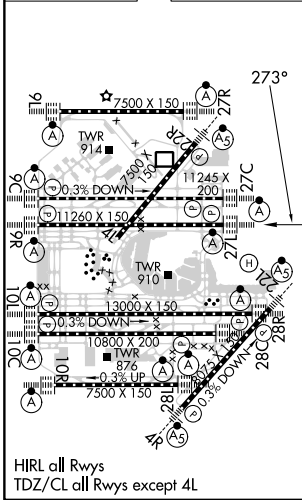
CHICAGO O'HARE INTL (ORD)

RNP APCH - GPS.		ALSF-2	MISSED APPROACH: Climb to 4000 direct WASCO and hold.
<p>Simultaneous approach authorized. LNAV procedure NA during simultaneous operations. Use of FD or AP required during simultaneous operations. For uncompensated Baro-VNAV systems, LNAV/VNAV NA below -19°C or above 54°C.</p>			

D-ATIS 135.4 282.225	CHICAGO APP CON 119.0 292.125	O'HARE TOWER 126.9 348.0	GND CON (TWR NORTH) 124.125 (TWR SOUTH) 118.05 (ALL TWRs) 226.675	(TWR CENTER) 121.75 (IOBND) 121.9 (IBND)	CLNC DEL 121.6	CPDLC
--	---	------------------------------------	---	--	--------------------------	-------



ELEV 680	D	TDZE 654
----------	----------	----------



4000	WASCO	VGSI and RNAV glidepath not coincident (VGSI Angle 3.00/TCH 77).		NRMAH				
↑		JLOWW	EBENS	BASHH	RIPPR	GRABL	JOEBO	NRMAH
		2200	4000	5000	6000	7000	8000	9000
		1.2 NM to RW27L	3.5 NM	6 NM	3.1 NM	3.1 NM	3.1 NM	3.1 NM
		RW27L						GP 3.00° TCH 57
CATEGORY	A	B	C	D				
LPV DA	DA	854/18		200 (200-½)				
LNAV/VNAV DA	DA	1088/40		434 (500-¾)				
LNAV MDA	1100/24	446 (500-½)		1100/45	446 (500-¾)			

EC-3, 28 NOV 2024 to 26 DEC 2024

EC-3, 28 NOV 2024 to 26 DEC 2024