

SHAIN TWO ARRIVAL(RNAV) Transition Routes

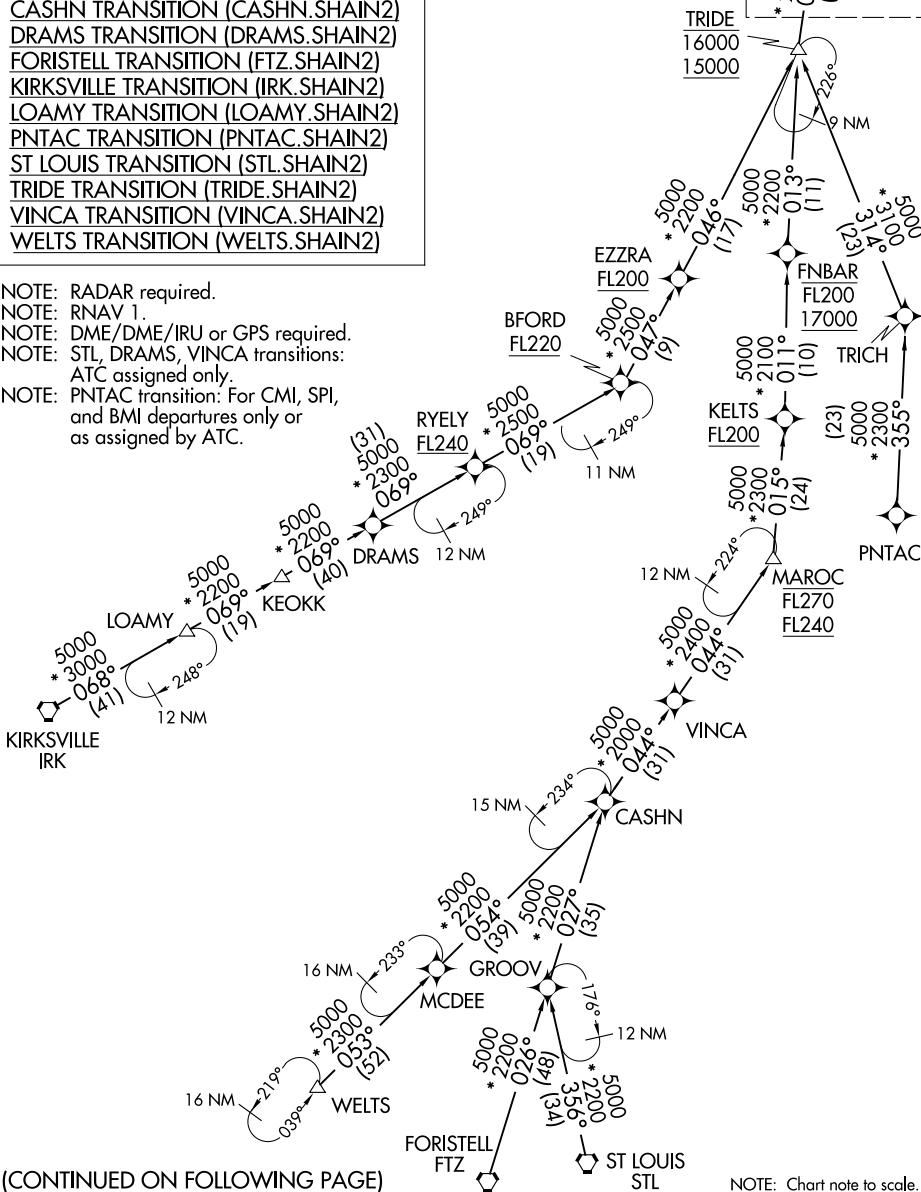
CHICAGO APP CON
119.0 292.125
D-ATIS
135.4 282.225

See following page for
Arrival Routes

SHAIN
12000

- BFORD TRANSITION (BFORD.SHAIN2)
- CASHN TRANSITION (CASHN.SHAIN2)
- DRAMS TRANSITION (DRAMS.SHAIN2)
- FORISTELL TRANSITION (FTZ.SHAIN2)
- KIRKSVILLE TRANSITION (IRK.SHAIN2)
- LOAMY TRANSITION (LOAMY.SHAIN2)
- PNTAC TRANSITION (PNTAC.SHAIN2)
- ST LOUIS TRANSITION (STL.SHAIN2)
- TRIDE TRANSITION (TRIDE.SHAIN2)
- VINCA TRANSITION (VINCA.SHAIN2)
- WELTS TRANSITION (WELTS.SHAIN2)

- NOTE: RADAR required.
NOTE: RNAV 1.
NOTE: DME/DME/IRU or GPS required.
NOTE: STL, DRAMS, VINCA transitions:
ATC assigned only.
NOTE: PNTAC transition: For CMI, SPI,
and BMI departures only or
as assigned by ATC.



EC-3, 28 NOV 2024 to 26 DEC 2024

EC-3, 28 NOV 2024 to 26 DEC 2024

(CONTINUED ON FOLLOWING PAGE)

NOTE: Chart note to scale.

SHAIN TWO ARRIVAL(RNAV) Transition Routes

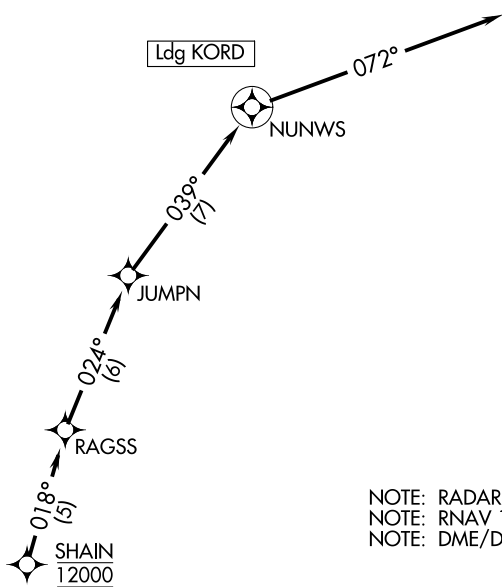
(SHAIN.SHAIN2) 20310

AL-166

CHICAGO O'HARE INTL (ORD)
CHICAGO, ILLINOIS

SHAIN TWO ARRIVAL(RNAV) Arrival Routes

CHICAGO APP CON
119.0 292.125
D-ATIS
135.4 282.225



NOTE: RADAR required.
NOTE: RNAV 1.
NOTE: DME/DME/IRU or GPS required.

NOTE: Chart note to scale.

ARRIVAL ROUTE DESCRIPTION

From SHAIN on track 018° to RAGSS, then on track 024° to JUMPN, then on track 039° to NUNWS, then on track 072°. Expect RADAR vectors to final approach course.

SHAIN TWO ARRIVAL(RNAV) Arrival Routes
(SHAIN.SHAIN2) 05NOV20

CHICAGO, ILLINOIS
CHICAGO O'HARE INTL (ORD)

EC-3, 28 NOV 2024 to 26 DEC 2024

EC-3, 28 NOV 2024 to 26 DEC 2024