

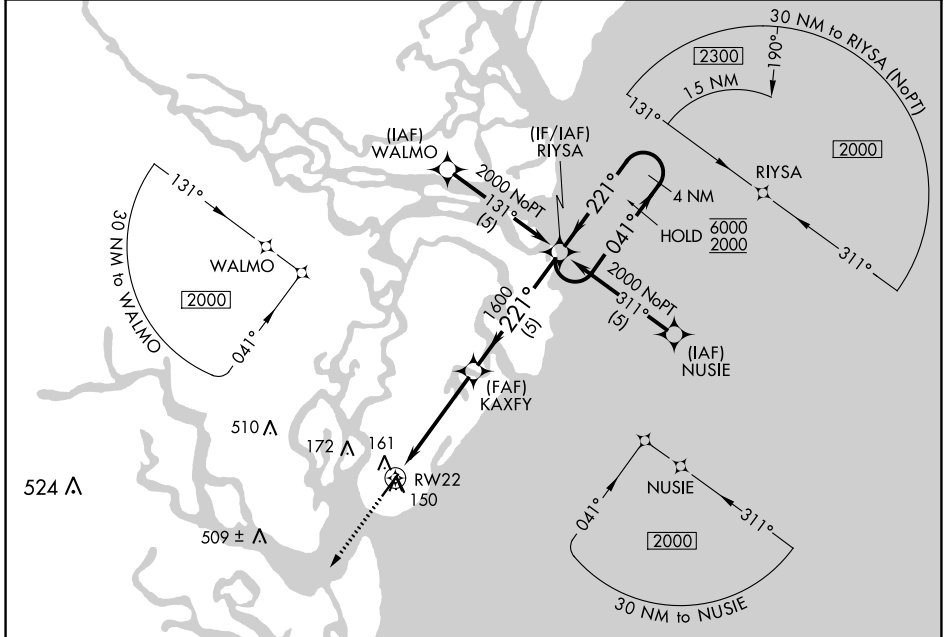
APP CRS	Rwy Idg	<b>4671</b>
<b>221°</b>	TDZE	<b>17</b>
	Apt Elev	<b>19</b>

# RNAV (GPS) RWY 22

ST SIMONS ISLAND (SSI)

RNP APCH.	<p><b>▼</b> Rwy 22 helicopter visibility reduction below <math>\frac{3}{4}</math> SM NA. Circling Rwy 16, 34 NA at night.</p>	MISSED APPROACH: Climb to 2000 direct VIXRY and hold.
-----------	---	---

AWOS-3PT <b>120.025</b>	JACKSONVILLE CENTER <b>126.75 277.4</b>	UNICOM <b>123.05 (CTAF) 0</b>
----------------------------	--	----------------------------------

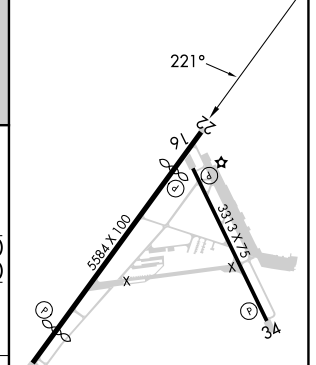
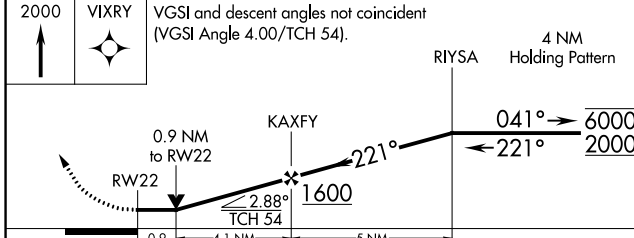


SE-4, 28 NOV 2024 to 26 DEC 2024

SE-4, 28 NOV 2024 to 26 DEC 2024

ELEV 19	<b>D</b> TDZE 17
---------	------------------

2000 VIXRY VGSI and descent angles not coincident (VGSI Angle 4.00/TCH 54).



CATEGORY	A	B	C	D
LNNAV MDA	460-1 443 (500-1)		460-1 $\frac{3}{8}$ 443 (500-1 $\frac{3}{8}$ )	
CIRCLING	480-1 461 (500-1)		500-1 $\frac{1}{2}$ 481 (500-1 $\frac{1}{2}$ )	580-2 561 (600-2)

REIL Rwy 4 **0**  
HIRL Rwy 4-22 and 16-34 **0**