

HI-ILS or LOC Z RWY 26

LOC I-DDX 109.9	APCH CRS 261°	Rwy ldg 11,760 TDZE 109 Arprt Elev 109
---------------------------	-------------------------	----------------------------------------------------------------------------

[USAF]

SEYMOUR JOHNSON AFB (KGSB)

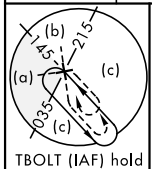
RADAR or DME required.

ALSF-1

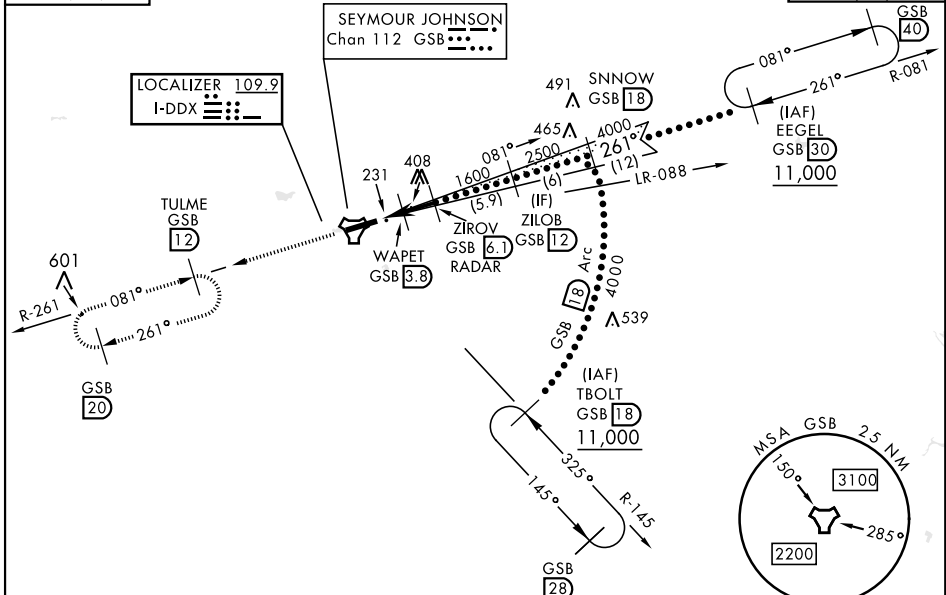
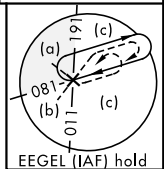
MISSED APPROACH: Climb to 2200 via GSB
TACAN R-261 to TULME and hold.

▼ * When ALS inop, increase RVR to 40 and vis to 3/4 mile.
** When ALS inop, increase RVR to 60 and vis to 1 1/8 miles.

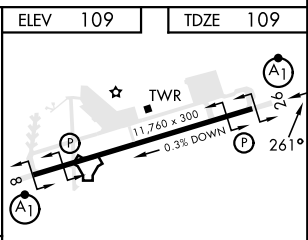
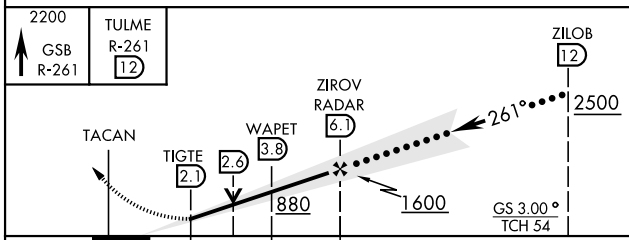
ATIS ★ 317.625	APP CON 123.7 290.9 (258°- 110°) 119.7 273.6 (111°- 257°)	TOWER ★ 126.25 370.875	GND CON 132.45 275.8	CLNC DEL 128.025 270.8
--------------------------	-------------------------------------------------------------------------------	----------------------------------	--------------------------------	----------------------------------



397 ***Circling N of Rwy 8-26 not authorized.
Autopilot coupled approach
NA below 375' MSL.



EMERG SAFE ALT 100 NM 3700



CATEGORY	C	D	E	HIRL Rwy 8-26					
S-ILS 26*	309/24		200 (200-1/2)	FAF to MAP 4 NM					
S-LOC 26**	500/35		391 (400-5/8)	Knots	120	140	160	180	200
CIRCLING***	680-1 1/2		740-2	740-2 1/4					
	571 (600-1/2)		631 (700-2)	631 (700-2 1/4)	Min:Sec	2:00	1:43	1:30	1:20

HI-ILS or LOC Z RWY 26

SE-2, 28 NOV 2024 to 26 DEC 2024

SE-2, 28 NOV 2024 to 26 DEC 2024